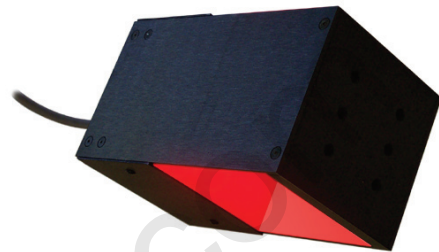


DL37100

3" x 3" Axial Diffuse Illuminator



Aii Even illumination over the full 75mm x 75mm field of view.

Aii Designed for inspecting large specular objects.

Ordering Information

Standard Product:
Shipped Next Day

Standard Product Variation:
Shipped Within Two Weeks

DL37100-660C2

Configured for use with Ai
Power Supply

Optimal working distance:
25.4mm (1")
Effective Working Range:
12.7-50mm (.5"-2")

	Spectral wavelength	Optional power Compatibility	Optional light Conditioning	Alternative Connector
DL37100	- XXX	XX	X	XXX
	(UV) 395 ^o	IC	D	M12*
	(blue) 470	IS	(Diffuser)	(IS: 5-pin male; IC/24: 4-pin male)
	(green) 520	C2		
	(yellow) 590	C3		
	(orange) 625	C5		
	(red) 660	24		
	(infra-red) 880			
	(white) WHI			

◇UV LEDs have a considerably shorter half-life than other LEDs (<1000hrs). For this reason Ai recommends these LEDs be used in strobe mode only. For applications requiring continuous 24v power, contact Ai for assistance.

IC = iCS (requires 24v power supply)

IS = ISU (24 volt PS required.)

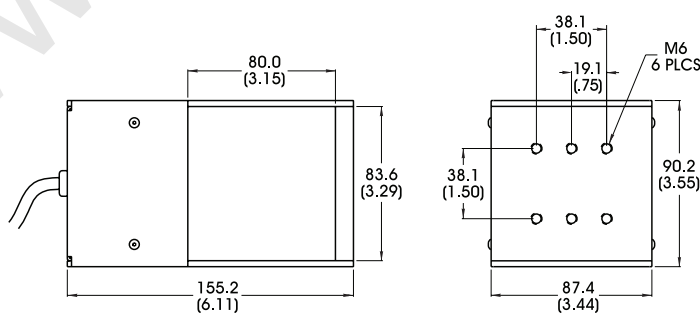
C2 = Ai Connector

C3 = Pulsar 710 Connector

C5 = Pulsar 320 Connector

* Available with IC, IS, and 24v options only

Dimensional Information



[Click for Installation Models & Drawings](#)

Cable Length: 1.5 Meter (59")

DIMENSIONS ARE IN MILLIMETERS (INCHES)

Standard Variation Current Specifications

	blue	green	yellow	orange	red	infra-red	white	
@24	400	400	200	200	300	300	400	mA

Standard Product Information

Finish: Black Anodized

Operating Temperature: 0-60° C

Meets Specifications: CE, RoHS

LED products provide a lifespan significantly greater than other vision lighting technologies

advancedillumination.com

For design help, accessories or pricing, please contact:
sales@avsupply or call: 1-858-565-1101

AUDIOVIDEO SUPPLY
1-800-284-2288 sales@avsupply.com
www.avsupply.com