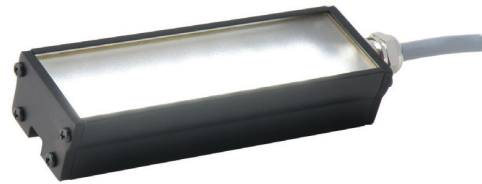


- Aii** High intensity light in a small package - only 1.27" wide
- Aii** Expandable in 2" increments; Lengths from 2" to 20"



## Ordering Information

**Standard Product Variation:** Shipped Within Two Weeks

Lighted Length	Spectral wavelength	Optional power compatibility	Wash Down Option	Optional Light Conditioning	Alternative Connector
EL116 XX	XXX	XX	X	X	XXX
2" increments up to 20"	(blue) 470 (red) 625 (white) WHI	IC i3 C2 C3 C5 24	W	D (Diffuser)	M12* (i3: 5-pin male; IC/24: 4-pin male)

IC = iCS (requires 24v power supply)  
i3 = Combined continuous-on and strobe over-drive (24 volt PS required.)  
C2 = Ai Connector  
C5 = Pulsar 320 Connector

- Maximum Length: 6"
- Maximum Length: 3"
- Not available in combination with the Wash Down Option
- Available with IC, i3, and 24v options only

ELI16 Unsealed	
PART NUMBER	LENGTH IN MM
EL11602	64.0 (2.52)
AL116*	114.8 (4.52)
EL11606	165.6 (6.52)
EL11608	216.4 (8.52)
EL11610	267.2 (10.52)
EL11612	318.0 (12.52)
EL11614	368.8 (14.52)
EL11616	419.6 (16.52)
EL11618	470.4 (18.52)
EL11620	521.2 (20.52)

\*see AL116 Spec Sheet

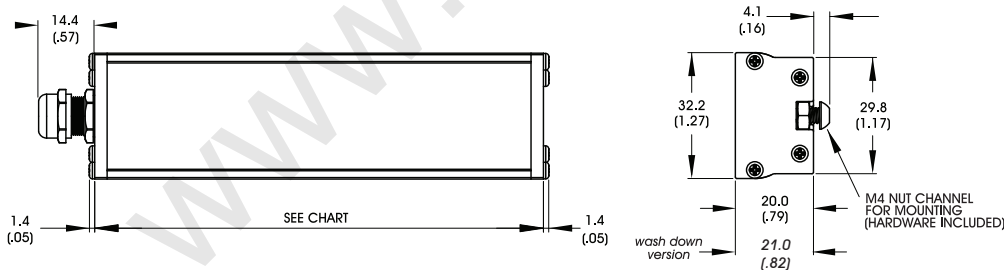
ELI16 with Washdown	
PART NUMBER	LENGTH IN MM
EL11602	66.6 (2.62)
AL116*	117.4 (4.62)
EL11606	168.2 (6.62)
EL11608	219.0 (8.62)
EL11610	269.8 (10.62)
EL11612	320.6 (12.62)
EL11614	371.4 (14.62)
EL11616	422.2 (16.62)
EL11618	473.0 (18.62)
EL11620	523.8 (20.62)

\*see AL116 Spec Sheet

Built-to-order lights are non-returnable.

## Dimensional Information

[Click for Installation Models & Drawings](#)



STANDARD CABLE LENGTH: 1.5 Meter (59")

DIMENSIONS ARE IN MILLIMETERS (INCHES)

Maximum draw per each 50mm (2") segment

	blue	red	white	
24v	200	200	200	mA

## General Specifications

Finish: Black Anodized

Operating Temperature: 0-60 C°

Meets

[advancedillumination.com](http://advancedillumination.com)

For design help, accessories or pricing, please contact:  
sales@avsupply or call: 1-858-565-1101