

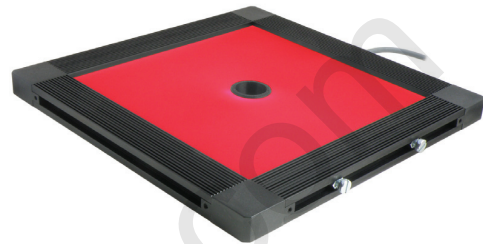


Distributed By: Audio Video Supply -- Tel: 1-800-284-2288 -- www.avsupply.com

FX0808

8" x 8" Side-Fired LED Flat Diffuse Light

- 4i** 30,000 lux - 40% brighter than 8" x 8" surface mount light
- 4i** Low heat output
- 4i** Space saving design for inspecting reflective objects



Ordering Information

Standard Product:
Shipped Next Day

FX0808-625IC

Configured with inline
Current Source

Standard Product Variation:
Shipped Within Three Weeks

FX0808 -

Spectral wavelength	Optional power Compatibility	Alternative Connector
XXX	XX	XXX
(blue) 455	IC	M12*
(green) 520	IS	(IS: 5-pin male; IC: 4-pin male)
(red) 625	C3	
(white) WHI	C5	

IC = iCS (requires 24v power supply)

IS = ISU (24 volt PS required.)

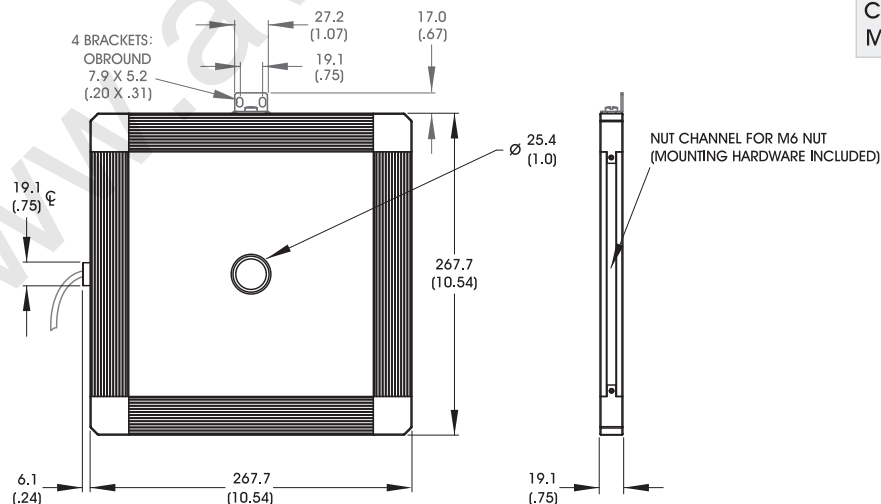
C3 = Pulsar 710 Connector

C5 = Pulsar 320 Connector

* Available with IC and IS options only

Built-to-order lights are non-returnable.

Dimensional Information



[Click for Installation Models & Drawings](#)

Cable Length: 1.5 Meter (59")

DIMENSIONS ARE IN MILLIMETERS (INCHES)

Current Specifications

blue	green	red	white
23W	23W	23W	23W

 @24V

Product Information

Finish: Black Anodized

Operating Temperature: 0-60° C

Meets Specifications: CE, RoHS

LED products provide a lifespan significantly greater than other vision lighting technologies

advancedillumination.com

For design help, accessories or pricing, please contact:
sales@avsupply or call: 1-858-565-1101

AUDIOVIDEO SUPPLY
1-800-284-2288 sales@avsupply.com
www.avsupply.com