



>>> FULL HD RESOLUTION, DUAL STREAM,  
TRUE DAY / NIGHT, ON-BOARD STORAGE, IP CAMERA

FULL BODY IP CAMERA  
**IPC2MT**



Lens not included

- > Brilliant Video Quality with Full HD, 1920 x 1080 Resolution
- > Highly Efficient H.264 Video Compression which Drastically Reduces Bandwidth and Storage Requirements
- > Progressive Scanning for Sharper Video Motion Images
- > Dual Video Streams Simultaneously at the Full Frame Rate in all Resolutions up to Full HD (1920 x 1080) using Motion JPEG and H.264
- > Supports a Micro-SD Memory Card Slot for Local, Event Detection Recording
- > Minimum Scene Illumination 2.5Lux Color; 0.2Lux B/W; at F1.2, 50IRE
- > TRUE Day/Night Functionality for Low Lighting Conditions
- > Two Way Audio Capability
- > C/CS Lens Mount, Tool-Less Back Focus Ring for Easy Adjustment
- > Backlight Compensation, 2D-DNR (Digital Noise Reduction) and Auto White Balance
- > Motion Detection (8 Windows), Privacy Masking (8 Windows) and FTP Image Upload
- > View and record up to 64 cameras simultaneously with included ATVision IP Remote Management Software
- > Up to 10 Simultaneous Connections through Remote Monitoring
- > Multi-user Authority, Privacy Zone, HTTPS and IP Filtering for Enhanced Data Protection
- > Convenient Network Connection using the UPnP (Universal Plug and Play) Function
- > ONVIF Compliant for Network Video Interoperability
- > Optional Lenses, Housings and Mounts Available
- > PoE & 12VDC/24VAC Power Option Capability



# FULL BODY IP CAMERA

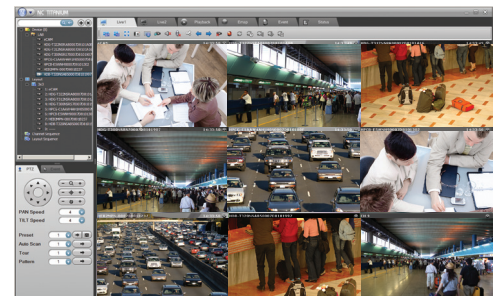
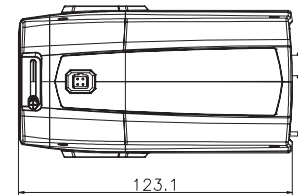
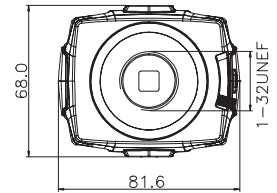
# IPC2MT

IP PRODUCT SERIES

## SPECIFICATIONS

	MODEL	IPC2MT	
CAMERA	Image Sensor	1/2.7" Progressive Scan RGB CMOS	
	Active Array	1920(H) x 1080(V)	
	Mount	C/CS Mount	
	F-Number	F1.2 ~ F3.4	
	Min. Illumination	Color: 2.5Lux, B/W: 0.2Lux (F1.2, 50IRE)	
NETWORK	Shutter Speed	1/20,000 ~ 1/30	
	Video Compression	Motion JPEG, MPEG-4 Part2, H.264 (MPEG-4 Part 10); Profiles: H.264 MP and BP, MPEG-4 ASP and SP	
	Video Resolutions	1920x1080	
	Frame Rate	30fps @ all resolutions	
	Video Streaming	Simultaneously H.264(or MPEG-4) and MJPEG, Controllable Frame Rate and Bandwidth VBR/CBR H.264 and MPEG-4	
	Audio Streaming Protocol	2 Way TCP/IP, UDP, IPv4/v6, HTTP, HTTPS, QoS, FTP, SNMP, uPnP, RTP, RTSP, RTCP, DHCP, ARP, Zeroconf, Bonjour	
	Security	Multi-user authority, HTTPS, IP Filtering, Privacy Zone	
	Remote Access	ATVision IP Remote Management Software, Web Browser	
	Max. Connection	10	
	Compatible 3rd Party VMS	See link on www.atvideo.com	
	Alarm Events	File upload via FTP and HTTP, Notification via E-mail, HTTP and TCP, External Output activation, Audio alert activation	
	Video Buffering	Pre and Post Alarm	
	Motion Detection	Yes, max. 8 programmable windows	
	Network Time Synchronization	Yes	
	Micro-SD Card Recording	Yes, Event	
	Software Reset	Yes	
	Factory Reset	Yes, Button/Web browser	
	Auto Recovery	Yes	
	Installation Tool	Yes, SmartManager (included utility software)	
	Upgrade	Yes, Web browser/SmartManager (included utility software)	
	GENERAL	Alarm Input	Terminal, 1 TTL input
		Alarm Output	Terminal, 1 open collector (max. 24V DC, max. 100mA)
		Micro-SD Card	Micro-SDHC class 6 or above recommended
		Ethernet	RJ-45 10BASE-T/100BASE-TX
		Video Output	BNC, 1.0Vp-p (75ohm, composite)
Audio In/Out		Terminal, 1 line input / 1 line output	
Auxiliary		Terminal, RS485 Tx+/Tx-	
Starting Temperature		32°F ~ 122°F (0°C ~ 50°C)	
Operating Temperature		14°F ~ 122°F (-10°C ~ 50°C)	
Operation Humidity		0~90% (non-condensing)	
Power Consumption		AC24V/DC12V max.3.0watt, Power over Ethernet IEEE 802.3a Class2/3	
Dimensions (WxHxD)		(81.6x68x123.1mm)	
Unit Weight		(335g)	
Conformity Certifications		FCC, CE, UL, MIC	

## DIMENSIONS



ATVision IP Remote Management Software

## ACCESSORIES

**Lenses:**  
TEK510DC 4.5-10mm Megapixel, Vari-focal DC Auto Iris Lens

**Mounts:**  
CM-TBAR Camera Mount for Drop Ceiling "T-bar"  
CMD16W Camera Wall Mount (White)

**Environmental Housing:**  
HT1203N Camera Housing w/Heater-Blower

**Housing Mounts:**  
HMW13 Medium Duty Wall Mount  
A-CM150 Corner Mount Bracket for HMW13  
A-CM151 Pole Mount Bracket for HMW13  
A-CS164A Pipe/Pole Mount Arm for HT1203N

System Requirements for ATVision IP Remote Management Software:  
Operating System: Microsoft® Windows® XP Professional, Windows Vista™ Enterprise/Ultimate, Windows 7 Professional/Enterprise/Ultimate (Windows 7 recommended)  
CPU: Intel® Core™2 Quad processors or higher (Core™ i7 processor recommended)  
RAM: Minimum 1 GB (4 GB or more recommended)