

D1 RESOLUTION, DUAL STREAM, TRUE DAY / NIGHT, DIGITAL-WDR, IP CAMERA

FULL BODY IP CAMERA

IPC560TDN



(Lens not included)

- ▶ Super Video Quality with D1 (720 x 480) Resolution via Network Connection and 560TVL Resolution via Analog Video BNC Output Simultaneously
- ▶ Highly Efficient H.264 Video Compression which Drastically Reduces Bandwidth and Storage Requirements
- ▶ Dual Video Streams Simultaneously at the Full Frame Rate in all Resolutions up to D1 (720 x 480) using Motion JPEG and H.264
- ▶ TRUE Day / Night and Digital Wide Dynamic Range (D-WDR) Functionality for all Lighting Conditions
- ▶ Two-Way Audio Compatibility and 256x Sense-Up Functionality
- ▶ C/CS Lens Mount, Tool-Less Back Focus Ring for Easy Adjustment
- ▶ Minimum Scene Illumination 0.25Lux Color; 0.01Lux B/W at F1.2, 50IRE
- ▶ Backlight Compensation, 3D-DNR (Digital Noise Reduction) and Auto White Balance
- ▶ Motion Detection (4 Windows), Privacy Masking (8 Windows) and FTP Image Upload
- ▶ View and Record up to 64 Cameras Simultaneously with included ATVision IP Remote Management Software
- ▶ Up to 10 Simultaneous Connections through Remote Monitoring
- ▶ ONVIF Compliant for Network Video Interoperability
- ▶ Optional Lenses, Housings and Mounts Available
- ▶ PoE & 12VDC/24VAC Power Option Capability



FULL BODY IP CAMERA

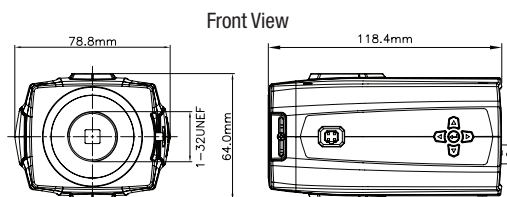
IPC560TDN

IP PRODUCT SERIES

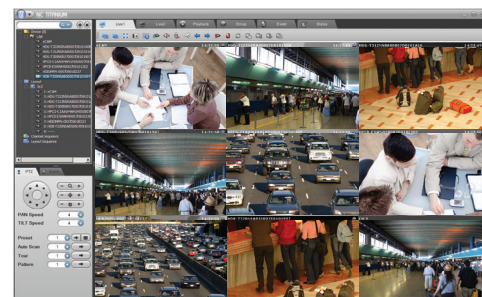
SPECIFICATIONS

MODEL		IPC560TDN
CAMERA	Image Sensor	1/3" SONY Super HAD CCD
	Total Pixels	811(H)x508(V)
	Scanning System	2:1 interlace
	Scanning Frequency	15.734KHz(H)x59.94Hz(V)
	Sync. System	Internal / Line lock
	Resolution	560TVL
	Min. Illumination	Color: 0.25Lux, B/W: 0.01Lux (Sense-Up: Off)
	S/N Ratio	50dB (AGC Off)
	Video Compression	Motion JPEG, MPEG-4 Part2, H.264 (MPEG-4 Part 10)
	Video Resolutions	160x120 ~ 720x480
NETWORK	Frame Rate	Up to 30fps @ all resolutions
	Video Streaming	Simultaneously H.264 (or MPEG-4) and MJPEG Controllable Frame Rate
	Audio Compression	G.726 ADPCM 40kbps~16kbps
	Audio Streaming	2 Way
	Protocol	TCP/IP, UDP, IPv4/v6, HTTP, HTTPS, QoS, FTP, SNMP, uPnP, RTP, RTSP, RTCP, DHCP, ARP
	Security	Multi-user authority, HTTPS, IP Filtering, Privacy Zone
	Remote Access	ATVision IP Remote Management Software, Web Browser
	Max. Connection	10
	Compatible 3rd Party VMS	See link on www.atvideo.com
	Alarm Triggers	Motion Detection, External Input, Manual Trigger
GENERAL	Alarm Events	File Image Upload; Notification Email; Ext. Output; Audio Alert
	Video Buffering	Pre and Post Alarm
	Motion Detection	Yes, max. 8 programmable windows
	Time Sync.	Yes
	Software Reset	Yes
	Factory Reset	Yes, Button/Web browser
	Auto Recovery	Yes
	Installation Tool	Yes, SmartManager (included utility software)
	Upgrade	Yes, Web browser/SmartManager (included utility software)
	Alarm Input/Output	Terminal, 1 TTL input / 1 open connector output (max 24VAC, 100mA)
GENERAL	Ethernet	RJ-45 10BASE-T/100BASE-TX PoE
	Video Output	BNC, 1.0 Vp-p (75ohm, composite)
	Audio In/Out	Terminal, 1 line input / 1 line output
	Auxiliary	Terminal, RS485 Tx+Tx-
	OSD Buttons	Side: Up/Down/Left/Right/Enter, Rear: Factory Reset
	Auto IRIS Output	4-pin mini Din jack (Standard connections)
	Lens Mount	C/CS mount (Selected through back focus)
	Operating Temperature	32° - 113°F (0° - 45°C)
	Operation Humidity	0~90% (non-condensing)
	Power Consumption	AC24/DC12V max. 6.5watt, Power over Ethernet IEEE, 802.3af Class2/3
GENERAL	Dimension (WxHxD)	3.1"x2.52"x4.66" (78.8mmx64mmx 118.4mm)
	Unit Weight	.77lbs (.35kg)
	Conformity Certifications	FCC, CE, UL, MIC

DIMENSIONS



Rear View



ATVision IP Remote Management Software

System Requirements for ATVision IP Remote Management Software:

Operating System: Microsoft® Windows® XP Professional, Windows Vista™ Enterprise/Ultimate,

Windows 7 Professional/Enterprise/Ultimate (Windows 7 recommended)

CPU: Intel® Core™2 Quad processors or higher (Core™ i7 processor recommended)

RAM: Minimum 1 GB (4 GB or more recommended)

ACCESSORIES

Lenses:

A-LTV223314GCS	3.3~8mm Varifocal DC Auto-Iris Lens
SCV55014DC	5~50mm Varifocal DC Auto-Iris Lens
SCV2812ASIR	2.8~12mm Varifocal DC Auto-Iris Lens

Mounts:

CM-TBAR	Camera Mount for Drop Ceiling "T-bar"
CMD16W	Camera Wall Mount (White)

Environmental Housing:

HT1203N	Camera Housing w/Heater-Blower
---------	--------------------------------

Housing Mounts:

HMW13	Medium Duty Wall Mount
A-CM150	Corner Mount Bracket for HMW13
A-CM151	Pole Mount Bracket for HMW13
A-CS164A	Pipe/Pole Mount Arm for HT1203N