



ADVANCED
TECHNOLOGY
VIDEO

IP PRODUCT SERIES

>>> *1MP RESOLUTION, DUAL STREAM, TRUE DAY/NIGHT,
ON-BOARD STORAGE, IP VANDAL DOME*

IP VANDAL DOME *IPVD1MT*

- > Brilliant Video Quality with 1MP, 1280 x 720 Resolution
- > Highly Efficient H.264 Video Compression which Drastically Reduces Bandwidth and Storage Requirements
- > Progressive Scanning for Sharper Video Motion Images
- > 3-9mm Vari-focal Auto-Iris Lens
- > Dual Video Streams Simultaneously, up to 30-ips, at 720p Resolution using H.264 and MJPEG Compression
- > TRUE Day/Night Functionality for Low Light Applications
- > Supports a Micro-SD Memory Card Slot for Local, Event Detection Recording
- > Minimum Scene Illumination 2.5Lux Color; 0.2Lux B/W at F1.2, 50IRE
- > Backlight Compensation, 2D-DNR (Digital Noise Reduction) and Auto White Balance
- > Two-way Audio, Motion Detection (8 Windows), Privacy Masking (8 Windows) and FTP Image Upload
- > Up to 10 Simultaneous Connections through Remote Monitoring
- > View and Record up to 64 Cameras or View and Manage up to 64 NVR's, with included ATVision IP Remote Management Software
- > ONVIF Compliant for Network Video Interoperability
- > Test Monitor Cable Supplied
- > IP66 Weatherproof Rated and Impact Resistant Housing
- > Optional Wall and Pendant Mounts, and Heater Available



ONVIF

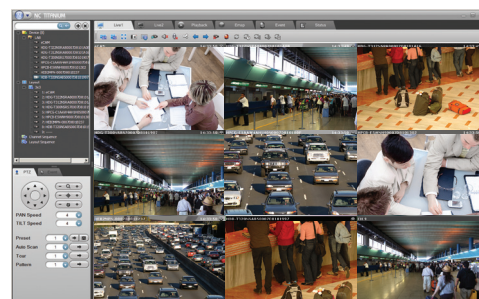
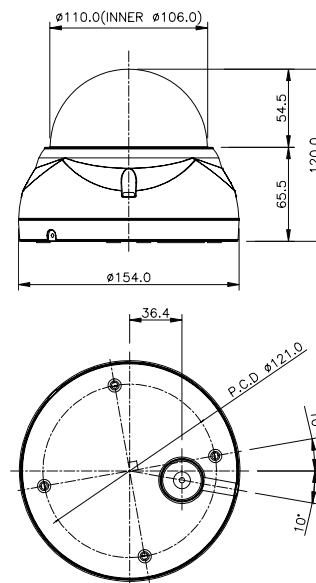
IP VANDAL DOME IPVD1MT

IP PRODUCT SERIES

SPECIFICATIONS

MODEL	IPVD1MT
C A M E R A	Image sensor
	Active Array
	Lens
	Angle of View
	Camera Angle Adjustment
	Min. Illumination
N E T W O R K	Shutter Speed
	Video Compression
	Video Resolutions
	Frame Rate
	Video Streaming
	Audio Compression
G E N E R A L	Audio Streaming
	Protocol
	Security
	Remote Access
	Max. Connection
	Compatible 3rd Party VMS
	Alarm Triggers
	Alarm Events
	Video Buffering
	Motion Detection
	Network Time Synchronization
	Micro-SD Card Recording
	Software Reset
	Factory Reset
	Auto Recovery
	Installation Tool
	Upgrade
	Alarm Input
	Alarm Output
	Audio In / Out
	Video Output
	Micro-SD Card
	Ethernet
	Operating Temperature
	Operation Humidity
	Power Consumption
	Environmental Rating
	External Dimension (Dia x H)
	Unit Weight
	Conformity Certifications

DIMENSIONS



ATVision IP Remote Management Software

ACCESSORIES

DB243W2	Wall Mount
A-PEXM	Ceiling Mount Bracket
A-PPDM	Ceiling Pipe Mount Adapter
VDMWC2	Wall and Ceiling Mount
PFMS7	Flush Mount
HT5024S7	Heater



System Requirements for ATVision IP Remote Management Software:
 Operating System: Microsoft® Windows® XP Professional, Windows Vista™ Enterprise/Ultimate, Windows 7 Professional/Enterprise/Ultimate (Windows 7 recommended)
 CPU: Intel® Core™2 Quad processors or higher (Core™ i7 processor recommended)
 RAM: Minimum 1 GB (4 GB or more recommended)

Advanced Technology Video | 850 Freeport Pkwy., Ste.100, Coppell, TX 75019
 Toll Free 888.288.7644 | Main 972.459.8645 | Fax 972.459.8661

©2012 ATV All rights reserved. Specifications and Design are subject to change without notice.
 ATV7240212-03

