



ADVANCED
TECHNOLOGY
VIDEO

AUDIO VIDEO SUPPLY

IP PRODUCT SERIES

>>> 2MP, TRIPLE STREAM, TRUE DAY/NIGHT &
WDR, MOTORIZED LENS, IR, IP VANDAL DOME

IP VANDAL DOME

IPVD2RWI

- > Brilliant Video Quality with 2MP Full HD, 1920 x 1080 Resolution
- > Highly Efficient H.264 Video Compression which Drastically Reduces Bandwidth and Storage Requirements
- > Progressive Scanning for Sharper Video Motion Images
- > Motorized 3-9mm Vari-focal Auto-Iris Lens, with Remote Focus
- > Triple Video Streams Simultaneously up to 60-ips, at 1080p Resolution using H.264 and MJPEG Compression
- > TRUE Day/Night and TRUE Wide Dynamic Range Functionality for all Lighting Applications
- > Powerful Video Analytic Functions and a Corridor / Aisle View Orientation Function
- > Onboard Storage Capability with Micro-SD Card Slot
- > Powerful IR LED Lights for 0Lux Night Time Operation up to 60ft
- > Backlight Compensation, 3D-DNR (Digital Noise Reduction) and Auto White Balance
- > Two-way Audio, Motion Detection (16 Windows), Privacy Masking (8 Windows) and FTP Image Upload
- > View and Record up to 64 Cameras and View and Manage an Unlimited Number of ATV NVR Units with included ATVision IP Remote Management Software
- > ONVIF Compliant for Network Video Interoperability
- > IP66 Weatherproof Rated and Impact Resistant Housing with 3-axis Gimbal, Built-in Heater, Test Monitor Cable and Remote Controller Supplied
- > Optional Wall and Pendant Mounts, Available
- > PoE & 12VDC/24VAC Power Option Capability



ONVIF | S



ADVANCED
TECHNOLOGY
VIDEO

AUDIO VIDEO SUPPLY

IP VANDER DOME

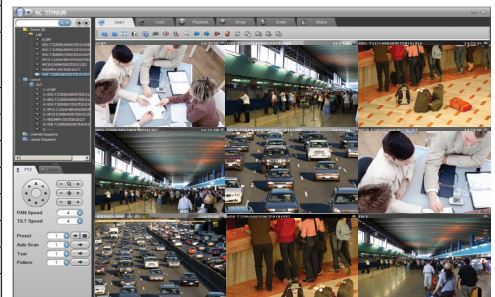
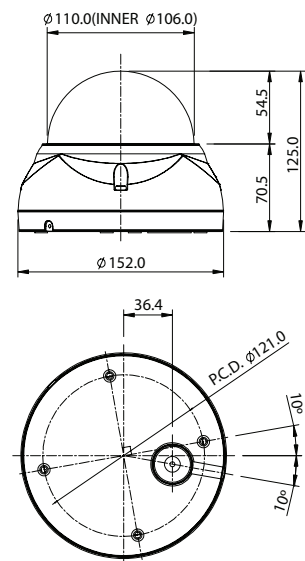
IPVD2RWI

IP PRODUCT SERIES

SPECIFICATIONS

MODEL	IPVD2RWI
CAMERA	Image sensor
	Active Array
	Lens
	Angle of View
	Camera Angle Adjustment
	Min. Illumination
	Shutter Speed
	IR LED
	Video Compression
	Video Resolutions
NETWORK	Frame Rate
	Video Streaming
	Audio Compression
	Audio Streaming
	Protocol
	Security
	Remote Access
	Max. Connection
	Compatible 3rd Party VMS
	Privacy Mask
GENERAL	Video Analytics
	Wide Dynamic Range
	Event Buffering
	Motion Detection
	Network Time Synchronization
	Micro-SD Card Recording
	Software and Factory Reset
	Auto Recovery
	Upgrade / Installation Tool
	Alarm In / Out
GENERAL	Audio In / Out
	Video Output
	Micro-SD Card
	Ethernet
	Operating Temperature
	Operation Humidity
	Power Source and Consumption
	Environmental Rating
	External Dimension (Dia x H)
	Unit Weight
	Conformity Certifications

DIMENSIONS



ATVision IP Remote Management Software

ACCESSORIES

- A-CM150 Corner Mount Adapter for the VDMWC2
- A-CM151 Pole Mount Adapter for the VDMWC2
- A-PEXM Ceiling Mount Bracket
- A-PPDM Ceiling Pipe Mount Adapter
- DB243W2 Wall Mount
- PFMS7 Flush Mount
- VDMWC2 Wall and Ceiling Mount

* Maximum possible range in the best conditions. Actual experience may vary depending on the application and environmental conditions.

Minimum System Requirements for ATVision IP Software

- Operating System: Microsoft Windows 7 (or 8) Professional/Enterprise/Ultimate
- CPU: Intel Core i7; RAM: 4GB; Ethernet Connection: 1Gbps
- Graphics Card: Gaming Rated, with 1GB at 1080p for Single Monitor; 2GB at 1080p for Multiple Monitors
- HDD's: 7200RPM and 64MB cache; 1 separate HDD for Operating System and Software; and 1 (2TB) HDD for Recording (refer to IP storage calculator)

