

VB-H610D FULL HD FIXED DOME IP SECURITY CAMERA

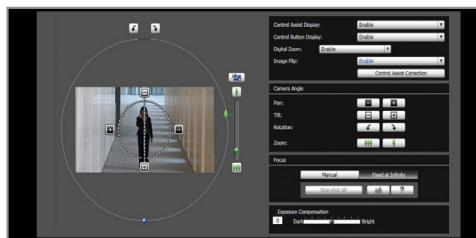
Full HD Dome Security Camera

Featuring a built-in Genuine Canon wide-angle 3x optical zoom lens with an ultra-wide 111° angle of view, this Full HD Dome IP Security Camera is ideal for use in areas with space restrictions such as stairways, narrow halls, and elevators. Integrating an advanced 16:9 CMOS sensor, **DiGiC DV III** image processor, and the new Canon **DiGiC NET II** network video processor for full 1920 x 1080 HD up to 30 fps in both H.264 and M-JPEG, the VB-H610D also provides ONVIF (Open Network Video Interface Forum) Profile S conformance for compatibility with other ONVIF-compliant third-party devices. A unique Remote Adjustment Function enables users to change the angle of view (including pan, tilt, rotation, zoom, and focus) of the camera from any Internet-connected PC, thereby eliminating the time and expense of on-site adjustments involving labor, transportation, and equipment. The VB-H610D is also equipped with On-board Video Analytics including Moving Object Detection, Removed Object Detection, Abandoned Object Detection, Camera Tampering Detection, Volume Level Detection, and a new Passing (or "tripwire") Detection.



Key Features

- ▶ Full HD CMOS Sensor
- ▶ Genuine Canon 111° Wide Angle Lens
- ▶ Brilliant Low-Light Performance
- ▶ On-Board Video Analytics
- ▶ ONVIF Profile S Conformant
- ▶ **DiGiC DV III** image processor
- ▶ **DiGiC NET II** network video processor transmits H.264 and M-JPEG simultaneously at 1920 x 1080 up to 30 fps



- ▶ Canon's Unique Remote Adjustment Function enables users to change the angle of view of the camera after installation.

Recommended For:

- ▶ Financial Institutions
- ▶ Industrial Plants and Utilities
- ▶ Military and Government Agencies
- ▶ Airports and Transportation Centers
- ▶ Casino/Gaming Industry
- ▶ Commercial Offices/Retail Locations

VB-H610D

VB-H610D FULL HD FIXED DOME IP SECURITY CAMERA

PRODUCT NAME: VB-H610D ITEM CODE: 6814B001 UPC CODE: 013803157390

SPECIFICATIONS

| | | | |
|----------------------------|--|---|--|
| CAMERA | IMAGE SENSOR | | 1/3 type CMOS (primary color filter) |
| | NUMBER OF EFFECTIVE PIXELS | | Approx. 2.1 million pixels |
| | SCANNING METHOD | | Progressive |
| | LENS | | 3x optical (4x digital) zoom lens (electric drive) |
| | FOCAL LENGTH | | 2.8 (W) – 8.4mm (T) |
| | F-NUMBER | | F1.2 (W) – F2.0 (T) |
| | VIEWING ANGLE | | Horizontal: 111° (W) – 36.5° (T) Vertical: 60.1° (W) – 20.5° (T) |
| | DAY/NIGHT SWITCH | | Auto/Manual |
| | MIN. SUBJECT ILLUMINATION | Day Mode (color) | 0.3 lux (F1.2, shutter speed 1/30 sec., when Smart Shade Control is off, 50IRE) 0.02 lux (F1.2, shutter speed 1/2 sec., when Smart Shade Control is off, 50IRE) 0.008 lux (F1.2, shutter speed 1/2 sec., when Smart Shade Control is on, 50IRE) |
| | | Night Mode (monochrome) | 0.015 lux (F1.2, shutter speed 1/30 sec., when Smart Shade Control is off, 50IRE) 0.001 lux (F1.2, shutter speed 1/2 sec., when Smart Shade Control is off, 50IRE) 0.0005 lux (F1.2, shutter speed 1/2 sec., when Smart Shade Control is on, 50IRE) |
| | FOCUS | | One-shot AF/Manual/Fixed at infinity |
| | SHOOTING DISTANCE (FROM FRONT OF LENS) | | Day Mode: 0.3m (12 in.) – infinity Night Mode: 1.0m (3.3 ft.) – infinity |
| | SHUTTER SPEED | | 1, 1/2, 1/4, 1/8, 1/15, 1/30, 1/60, 1/100, 1/120, 1/250, 1/500, 1/1000, 1/2000, 1/4000, 1/8000, 1/16000 sec. |
| | EXPOSURE | | Auto/Auto (Flickerless)/Auto (Shutter-priority AE)/ Manual (Shutter Speed, Aperture, Gain) |
| | WHITE BALANCE | | Auto/Light Source (Fluorescent/White Fluorescent/ Warm Fluorescent/ Mercury Lamp/Sodium Lamp/Halogen Lamp)/Lock (One-shot WB)/Manual |
| | METERING MODE | | Center-Weighted/Average/Spot |
| | EXPOSURE COMPENSATION | | 9 levels |
| | SMART SHADE CONTROL | | 7 levels (increases the brightness of shaded subjects in a video) |
| | AGC LIMIT | | 5 levels |
| | PAN ANGLE RANGE | | 350° (±175°) |
| | TILT ANGLE RANGE | | 150° (±75°) |
| | ROTATION ANGLE RANGE | | 350° (±175°) |
| | MOVING SPEED | | Pan: 19.2°/sec., Tilt: 14.2°/sec., Rotation: 43.7°/sec. – When the Camera Angle Setting Tool is used |
| | VIDEO COMPRESSION METHOD | | M-JPEG, H.264 |
| | VIDEO SIZE | | M-JPEG: 1920 x 1080, 960 x 540, 480 x 270, 320 x 240 H.264: 1920 x 1080, 960 x 540, 480 x 270 |
| | VIDEO QUALITY | | M-JPEG, H.264: 5 levels |
| | FRAME RATE | | M-JPEG: 0.1 – 30 fps H.264: 1/2/3/5/6/10/15/30 fps |
| MAX. FRAME RATE | | 1920 x 1080: 30 fps | |
| I-FRAME INTERVAL | | 0.5/1/1.5/2/3/4/5 sec | |
| SIMULTANEOUS CLIENT ACCESS | | Max. 30 Clients + 1 Admin Client – H.264: Max. 10 Clients | |
| CAMERA CONTROL | | Administrator, Authorized user, Guest user (level of control varies depending on user) Max. 50 user names and passwords registered for authorized users. | |
| ACCESS CONTROL | | User authority (user name and password), Host Access Restrictions (IPv4, IPv6) | |
| ENCRYPTED COMMUNICATIONS | | SSL/TLS, IPsec (Auto Key Exchange/Manual) | |
| SERVER | PROTOCOL | IPv4 | TCP/IP, UDP, HTTP, FTP, SNMP (MIB2), SMTP (Client), DHCP (Client), DNS (Client), ARP, ICMP, POP3, NTP, SMTP authentication, WV-HTTP (Canon proprietary), ONVIF |
| | | IPv6 | TCP/IP, UDP, HTTP, FTP, SMTP (Client), DHCPv6 (Client), DNS (Client), ICMPv6, POP3, NTP, SMTP authentication, WV-HTTP (Canon proprietary), ONVIF |
| | AUTOIP | | Available |
| | AUDIO COMPRESSION METHOD | | G.711 µ-law (64 kbps) |
| | AUDIO COMMUNICATION METHOD | | Full-duplex (two-way) – Echo cancellation function compliant Sound Transfer Protocol by Canon |
| | AUDIO FILE PLAYBACK | | Available (audio files can be played back when an event is triggered by the intelligent function or external device input.) – A separately-sold amplifier speaker is necessary |
| | PRIVACY MASK | | Number of registration: Max. 8 places, Number of mask colors: 1 (select from 9 colors) |
| | PRESET | | Max. 20 positions (Digital) (Preset Tour capable) |
| | INTELLIGENT FUNCTION | VIDEO | Detection Types: moving object detection, abandoned object detection, removed object detection, camera tampering detection, and passing detection |
| | | DETECTION SETTINGS | Max. 15 |
| | | VOLUME | Volume Detection |
| | EVENT TRIGGER TYPE | | External Device Input, Intelligent Function (Video), Intelligent Function (Volume), Timer |
| | IMAGE UPLOAD | | FTP/HTTP/SMTP (e-mail) Temporary storage memory in camera: Max. approx. 5 MB, Frame Rate: Max. 10 fps |
| EVENT NOTIFICATION | | HTTP/SMTP (e-mail) | |
| IMAGE CROPPING FUNCTION | | Digital PTZ Cropping sizes: 640 x 360, 512 x 288, 384 x 216, 256 x 144, 128 x 72 | |
| INTERFACE | NETWORK TERMINAL | | LAN x 1 (RJ45, 100Base-TX (auto/full-duplex/half-duplex)) |
| | AUDIO TERMINALS | INPUT | 1 Mini-Jack Connector (Mono), LINE IN or MIC IN |
| | | OUTPUT | 1 Mini-Jack Connector (Mono), LINE OUT |

SPECIFICATIONS (cont.)

| | | |
|-----------------------|--------------------------------|--|
| INTERFACE | EXTERNAL DEVICE I/O TERMINAL | Input x 2, Output x 2 |
| | MEMORY CARD | SD, SDHC, SDXC Memory Card Compatible. Frame Rate: Max. 1 fps |
| OPERATING ENVIRONMENT | TEMPERATURE | -10°C – +50°C (+14°F – +122°F) |
| | HUMIDITY | 5% – 85% (without condensation) |
| POWER SUPPLY | PoE | PoE power supply via LAN connector (IEEE802.3af compliant) |
| | AC ADAPTER | PA-V17 (100 – 240 V AC) (sold separately) |
| | EXTERNAL POWER SOURCE | 24 V AC/12 V DC |
| POWER CONSUMPTION | WITH PoE | Max. approx. 7.8 W |
| | WITH PA-V17 AC ADAPTER | Max. approx. 10.2 W |
| | WITH DC | Max. approx. 8.3 W |
| | WITH AC | Max. approx. 7.5 W |
| OTHER | DIMENSIONS (DIAMETER X HEIGHT) | 7.32 x 5.51 in. (186 x 140 mm) |
| | WEIGHT | 2.65 lbs (1200 g) |

OPTIONAL ACCESSORIES

| ITEM CODE NO. | DESCRIPTION |
|---------------|------------------------------------|
| 5004B001 | PS600-VB Junction Box Mounting Kit |
| 5091B001 | SR600-VB Recessed Mounting Kit |
| 2245B001 | PA-V17 AC Adapter |

OPTIONAL SOFTWARE

| ITEM CODE NO. | DESCRIPTION |
|---------------|---|
| 8222B001 | RM-64 v2.0 Network Video Recording Software |
| 8222B002 | RM-25 v2.0 Network Video Recording Software |
| 8222B003 | RM-9 v2.0 Network Video Recording Software |
| 8222B004 | RM-Viewer v2.0 (1 License) |
| 4973B001 | RM-Lite-V Additional Viewer License |

ONVIF Conformant Product

The VB-H610D is compatible with the ONVIF (Open Network Video Interface Forum) Profile S conformance, a standard communication protocol. ONVIF support makes it easy to integrate the VB-H610D with other ONVIF compliant third-party products. The VB-H610D is also backwards compliant with earlier versions of the ONVIF Protocol.



©2012 Canon U.S.A., Inc. All rights reserved. Not responsible for typographical errors. Specifications are subject to change without notice. Some of the images and effects are simulated. Canon and DIGIC are registered trademarks of Canon Inc. in the United States and may also be trademarks or registered trademarks in other countries. IMAGEANYWARE is a trademark of Canon. "ONVIF" and ONVIF are trademarks of ONVIF Inc. All other products and brand names may be registered trademarks, trademarks or service marks of their respective owners in the United States and/or other countries.

Canon
image*ANYWARE*

For more info:
Call 1-800-OK-CANON (1-800-652-2666)
pro.usa.canon.com