

# HG1214FCS-3

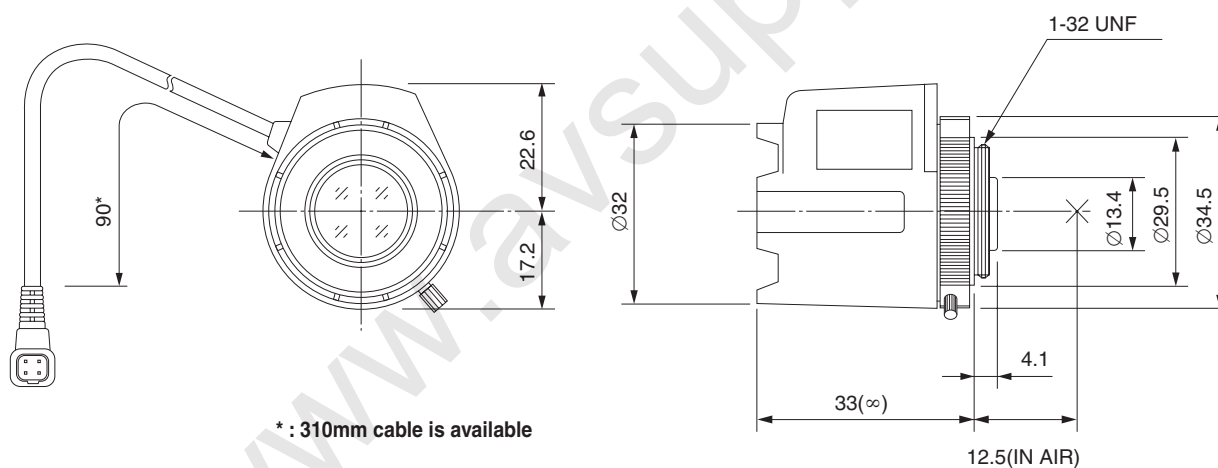
**12mm F1.4**  
**for 1/2 type Cameras, Fixed-focal Auto Iris DC Drive**  
**CS-Mount**

with Focus, w/o Amplifier

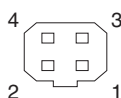
Model No.	HG1214FCS-3		Effective Lens Aperture	Front	Ø13.0mm				
Focal Length	12mm			Rear	Ø8.8mm				
Max. Aperture Ratio	1:1.4		Back Focal Length	8.6mm					
Max. Image Format	6.4mm x 4.8mm(Ø8mm)		Flange Back Length	12.5mm					
Operation Range	Iris	F1.4 - F360C	Mount	CS-Mount					
	Focus	0.3m - Inf.	Filter Size	—					
Control	Iris	DC Auto Iris	Dimensions	Ø32mm x 39.8mm x 33mm					
	Focus	Manual	Weight	35g					
Object Dimension at M.O.D.	16.3cm x 12cm								
Angle of View	D	1/2 type	38.5°	1/3 type	28.6°	1/4 type			
	H						30.4°	22.7°	17.0°
	V								
Coil	Drive	190Ω							
	Control	855Ω							
Operating Temperature	-20°C - +50°C								

M.O.D : Minimum Object Distance

## Dimensions



## Wiring Diagram



### Pin No.

1	BROWN	Control (-)
2	RED	Control (+)
3	YELLOW	Drive (+)
4	ORANGE	Drive (-)