

TG2616AFCS-4

2.6mm F1.6

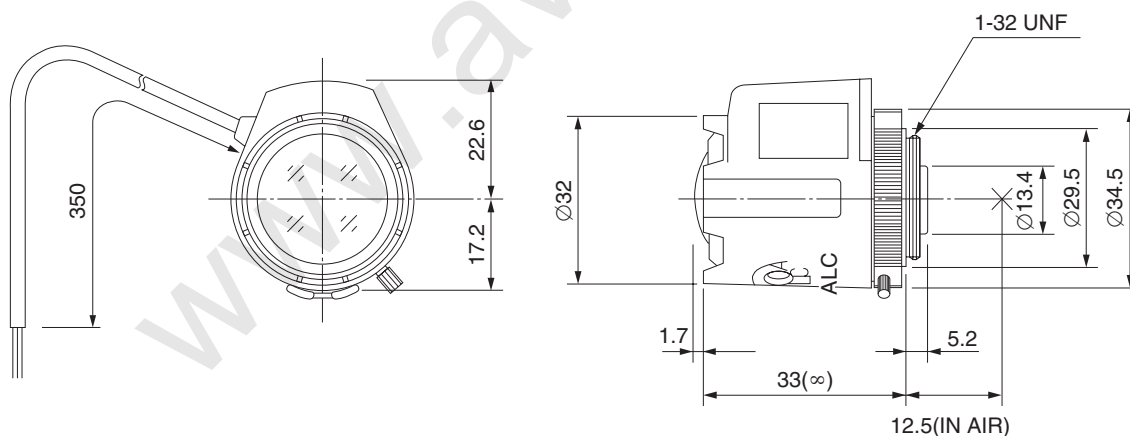
for 1/3 type Cameras, Fixed-focal Auto Iris VIDEO Drive
CS-Mount

with Focus and Amplifier

| | | | | | | | |
|----------------------------|-------|---|--------|--------------------|-------|-------------------------|--|
| Model No. | | TG2616AFCS-4 | | Effective | Front | Ø16.4mm | |
| Focal Length | | 2.6mm | | Lens Aperture | Rear | Ø8mm | |
| Max. Aperture Ratio | | 1:1.6 | | Back Focal Length | | 7.5mm | |
| Max. Image Format | | 4.8mm x 3.6mm(Ø6mm) | | Flange Back Length | | 12.5mm | |
| Operation Range | Iris | F1.6 - F360C | | Mount | | CS-Mount | |
| | Focus | 0.3m - Inf. | | Filter Size | | — | |
| Control | Iris | Video Auto Iris | | Dimensions | | Ø32mm x 39.8mm x 34.7mm | |
| | Focus | Manual | | Weight | | 43g | |
| Object Dimension at M.O.D. | | 71cm x 46.4cm | | | | | |
| Angle of View | D | 1/3 type | 123.0° | 1/4 type | 93.8° | | |
| | H | | 99.6° | | 75.4° | | |
| | V | | 75.4° | | 56.9° | | |
| Supply Voltage | | DC8V - DC16V | | | | | |
| Current | | Less than 35mA | | | | | |
| Response Time | | Approx. 2 sec. | | | | | |
| Light Weighting Method | | Adjustable between Average - Peak (to be Set at Average at Factory) | | | | | |
| Input Signal | | Video Signal (V. or V.S.) | | | | | |
| Iris Accuracy | | ±15% at Video Signal Level | | | | | |
| Sensitivity Adjustment | | 0.5V(p-p) - 1.0V(p-p) (Video Signal) | | | | | |
| Input Impedance | | High Impedance | | | | | |
| Operating Temperature | | -20°C - +50°C | | | | | |

M.O.D : Minimum Object Distance

Dimensions



Wiring Diagram

