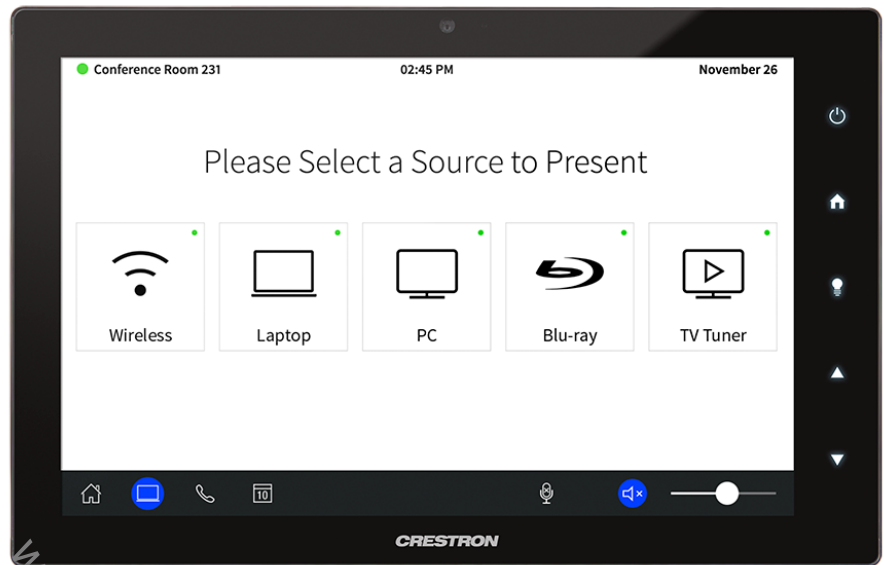


# 10.1" Touch Screen

- > Ultra clean, modern appearance
- > Thin profile and compact footprint
- > Affordable and easy to install
- > 10.1" (257 mm) widescreen active-matrix color display
- > 1280 x 800 WXGA display resolution
- > Capacitive touch screen technology
- > Multi-touch capable
- > Smart Graphics® performance
- > Backlit soft-touch capacitive buttons
- > Any/all button hide feature
- > Auto-brightness control
- > Voice recognition capability<sup>[1,2]</sup>
- > H.264 or MJPEG streaming video display
- > Built-in 5 MP H.264 IP camera<sup>[2]</sup>
- > Built-in microphone and speakers<sup>[2]</sup>
- > Rava® SIP intercom and phone technology<sup>[2]</sup>
- > Native Sonos® app<sup>[1]</sup>
- > Zoom Rooms™ conferencing control mode<sup>[6]</sup>
- > Room scheduling mode<sup>[4]</sup>
- > Available light bar and hallway sign options<sup>[5]</sup>
- > Built-in PinPoint™ beacon<sup>[2,7]</sup>
- > Customizable audio feedback
- > Built-in web browsing<sup>[1]</sup>
- > Multi-language support
- > On-screen keyboard
- > Customizable screensaver
- > Single-wire Ethernet connectivity
- > PoE or PoE+ network powered (refer to specifications)
- > Enterprise grade security
- > Web based configuration
- > Cloud-based provisioning and management
- > SNMP monitoring support
- > US, UK, or European electrical wall box mounting
- > Lectern mount over a rectangular cutout
- > Retrofit and masonry mounting options available<sup>[3]</sup>
- > Multi-surface and ADA compliance mounting options available<sup>[3]</sup>
- > Tabletop and swivel mount options available<sup>[3]</sup>
- > 4 RU rack mount option available<sup>[3]</sup>
- > Available in smooth black or white finish



For controlling audio, video, lighting, shades, HVAC, security, and other systems, Crestron touch screens are fully-customizable with easy-to-use controls and icons, true feedback and real-time status display, live streaming video, voice recognition, web browsing, and a full-featured media player for an enhanced multiroom entertainment experience.

With its clean, contemporary design highlighted by edge-to-edge glass and stunning HD color graphics, the Crestron TSW-1060 Series touch screen makes an elegant statement on any wall, tabletop, lectern, or equipment rack. Perfectly at home in the most contemporary residence or modern office building, its high-tech good looks underline its power for simplifying everyday tasks and functions throughout any facility.

The TSW-1060 Series delivers the ultimate touch screen experience in an unobtrusive, space-saving design. It features a brilliant, high-definition 10.1 inch capacitive touch screen display with Smart Graphics® and 5 soft-touch buttons. PoE connectivity and a range of mounting options make installation a breeze for both new and retrofit applications. Additional advanced features include the abilities to control any function using voice commands, view security cameras and other video sources, communicate using built-in video intercom and phone capabilities, and browse the Internet. Native applications are included to enable use as a room scheduling panel, control a Zoom Rooms™ conferencing system, and enjoy full access to a Sonos® Home Sound System.<sup>[1]</sup>

For room scheduling applications, see also the TSS-10 Series 10.1" Room Scheduling Touch Screen.

## Advanced Touch Screen Control

A Crestron® touch screen offers an ideal user-interface for controlling all the technology in your home, boardroom, classroom, courtroom, or command center. Touch screens simplify and enhance the way you use technology, doing away with those piles of remote controls, cluttered wall switches, disparate smartphone apps, and cryptic computer screens.

## Smart Graphics®

Crestron touch screens use Smart Graphics to deliver the ultimate user experience and the ultimate value by enabling the creation of dynamically rich user interfaces with incredible efficiency and unparalleled functionality. Using Smart Graphics, programmers can swiftly integrate fluid gesture-driven controls, animated feedback, rich metadata, embedded apps and



**TSW-1060-W-S – Shown in White**



**TSW-1060-B-S with TSW-1060-TTK-B-S Tabletop Kit**

widgets, and full-motion video for a deeply engaging and ultra-intuitive touch screen experience.

Crestron Smart Graphics offers these enhancements and more:

- Cool-looking graphical buttons, sliders, knobs, and gauges that are intuitive and fun to use
- Kinetic effects to enhance the feeling of realism, with lists and toolbars that scroll with momentum at the flick of a fingertip
- Drag-and-drop objects that snap into place, offering an easy way to switch sources
- Dashboard widgets to personalize the touch screen with clocks, weather, news, and other information<sup>[1]</sup>
- A power-saving screensaver that allows display of time, temperature, and other text content at a reduced brightness level
- Customizable themes allowing a completely different look and feel for every user, event, or season
- Fully-developed SmartObjects<sup>®</sup> that enable sophisticated control over complex devices with minimal programming
- A consistent look and feel across multiple touch screens of varying sizes

### Soft-Touch Buttons

The TSW-1060 includes five backlit, soft-touch capacitive buttons for quick access to commonly used functions. These buttons are pre-labeled with icons for “Power”, “Home”, “Lights”, “Up”, and “Down” functions. Each button is programmable via the control system for custom functionality, and any unused button can be hidden by simply turning off its backlight.

### Auto-Brightness Control

To ensure optimal visibility under varying lighting conditions, the TSW-1060 includes a built-in light sensor, which regulates the brightness of the display and button backlighting according to the ambient light level in the room. Separate auto-brightness settings are provided for the display and buttons to allow each to be adjusted or defeated as needed.

### Voice Recognition

Some things are easier *said* than *done*, so why not just *say* what you want and let Crestron *do* it for you? With built-in voice recognition, the TSW-1060 provides the ability to use spoken commands to control virtually anything. Voice recognition can be used to quickly turn devices on or off, select and play a specific media title or playlist, change the channel, choose a lighting scene, lower the windows shades, lock the doors, arm the security system, or enter a password. Simply say a command and Crestron does the rest.<sup>[1,2]</sup>

### Streaming Video

High-performance streaming video capability makes it possible to view security cameras and other video sources right on the touch screen. Native support for H.264 and MJPEG formats allows the TSW-1060 to display live streaming video from an IP camera, a streaming encoder (Crestron [CEN-NVS200](#), [DM-TXRX-100-STR](#), or similar<sup>[3]</sup>), or a [DigitalMedia™ switcher](#). Video is delivered to the touch screen over Ethernet, eliminating the need for any extra video wiring.

### Rava<sup>®</sup> SIP Intercom

[Rava SIP Intercom Technology](#) enables hands-free VoIP communication with other Rava-enabled touch screens and door stations. Rava works over Ethernet, supporting 2-way intercom, video intercom, and paging without requiring any special wiring. VoIP phone capability is also possible through integration with a SIP-compatible IP phone system or SIP server, allowing hands-free telephone functionality complete with speed-dialing, caller ID, custom ringers, and other enhancements. Built-in echo cancellation affords full-duplex performance for clear, seamless voice communication using the TSW-1060's integrated microphone and speakers.<sup>[2]</sup>

### Built-in Camera

A 5 megapixel camera is built into the TSW-1060 to support video intercom and room monitoring capabilities. This feature allows individuals to communicate both verbally and visually between two touch screens, or between one touch screen and a Rava-compatible video door station. It can also be used to visually monitor any room securely using an H.264 compatible decoder (Crestron [DM-TXRX-100-STR](#), [DM-RMC-100-STR](#), or similar<sup>[3]</sup>) or a third-party video monitoring system.<sup>[2]</sup>



Shown in Room Scheduling mode with optional Light Bar and Multi-Surface Mount Kit

## Sonos® App

Merging technologies from [Sonos](#) and [Crestron](#) brings a whole-house music experience like no other. From any touch screen in the house, a family can effortlessly browse for tracks, artists, or playlists using all the services available from Sonos and instantly play them in any room using Sonos wireless speakers or a Crestron [Sonnex® Multiroom Audio System](#). The Sonos app runs natively on the TSW-1060, enabling enhanced control of Sonos products as part of a complete Crestron system. The app checks for updates nightly so it's always current.<sup>[1]</sup>

## Room Scheduling Mode

As part of a complete enterprise room scheduling solution, the TSW-1060 can be deployed in room scheduling mode. Running the Crestron Scheduling App, the TSW-1060 integrates directly with [Crestron Fusion®](#), [Microsoft® Exchange](#) (for users of [Outlook®](#) and [Office 365®](#)), or [Google Calendar™](#) (including [G Suite™](#)).<sup>[4]</sup>

See also the [TSS-10 Series 10.1" Room Scheduling Touch Screen](#) for an alternate solution.

Crestron room scheduling touch screens help organizations to maximize productivity and realize the most usable time out of every meeting space. They install at the entrance to each room to provide indication of the room's availability and a view of its schedule for the day. If the room is reserved, its touch screen displays details about the current meeting, accented in red, so attendees can immediately confirm they're in the right place before entering the room. If the room is available, the screen states so in green and shows the time remaining until the next scheduled meeting. If desired, the room can be reserved on the spot for an ad hoc meeting.

If you wish to reserve a room for later in the day, just step up to any touch screen, swipe through the room's timeline for the day, and reserve the room for any available time slot. If that room isn't available when you want it, the touch screen can find you another available room nearby. Additional optional functions include the abilities to check into a scheduled meeting,

extend a meeting, end a meeting early, toggle between two languages, or limit access to various functions using PIN code authorization.

## Status Indicator Options

Adding the optional light bar accessory ([TSW-1060-LB Series](#)) to a TSW-1060 produces a ring of light around the perimeter of the touch screen, which can be seen with just a glance down the hallway. For room scheduling applications, the light bar provides 180° visual indication of a room's availability status, glowing green if the room is available and red when reserved. Other custom functionality is available through integration with a control system, allowing illumination of the light bar in any color.<sup>[5]</sup>

As an alternative to the light bar, Crestron offers a selection of hallway signs and indicators that mount on the wall or ceiling above each touch screen. The [SSW](#) and [SSC](#) series hallway signs both feature a two-sided acrylic sign face that can be custom engraved with the room name or number. The [SIW-100](#) offers a lower profile wall mount status indicator.<sup>[5]</sup>

## Zoom Rooms™ Mode

Native [Zoom Rooms](#) mode enables the TSW-1060 to be used as a touch screen control panel for a Zoom Rooms software-based conferencing and collaboration solution. The TSW-1060 offers a superior alternative to a consumer tablet device, providing a more reliable and secure platform with versatile, streamlined options for tabletop, wall mount, and lectern mount installations. Its 10.1" color touch screen delivers the same user-friendly Zoom Rooms experience as a typical tablet, but without the risk of misplacing the device. Instead of [Wi-Fi®](#), the TSW-1060 uses a wired Ethernet connection to ensure reliable connectivity at all times.<sup>[6]</sup>

The TSW-1060 may be configured to run Zoom Rooms Mode exclusively, or to allow toggling between Zoom Rooms Mode and regular Smart Graphics touch screen control mode. The latter allows for integrating Zoom Rooms conferencing into a larger AV system while providing control for both through one touch screen device.

## PinPoint™ Beacon (Coming Soon)

The built-in PinPoint proximity detection beacon enhances the intelligence and personalization of a Crestron system by enabling a smartphone or tablet device to always know what room it's in. It works with the [Crestron App](#) or [Crestron PinPoint App](#), using [Bluetooth®](#) technology to determine when the mobile device is in or near the same room as the beacon, and signals the mobile app to automatically display the appropriate controls and information for that location.<sup>[2,7]</sup>

## Web Browsing

Using its built-in web browser, the TSW-1060 provides quick access to online program guides and other web-based services at the touch of a button, allowing enhanced touch screen control of DVRs and other appliances without having to pick up a separate tablet or smartphone. If a device can be controlled or managed through a web browser, it can be integrated into the Crestron system through the TSW-1060. Of course, the web browser may also be used to simply browse the Internet, check traffic conditions, or look up a recipe.<sup>[1]</sup>

## On-Screen Keyboard

Typing in passwords, URLs, and text searches is facilitated using the on-screen multi-language keyboard.



## Multi-Touch Support

The TSW-1060's capacitive touch screen affords enhanced capabilities for browsing web pages using multi-touch gestures.

## Audio Feedback

Customized audio files can be loaded to add another dimension to the touch screen graphics using personalized sounds, button feedback, and voice prompts.

## Single-Wire Connectivity

A simple Ethernet LAN connection is all that is required to wire the TSW-1060, containing all control, video, intercom, and power signals within a single wire.

## Power over Ethernet

Using PoE technology, the TSW-1060 gets its operating power right through the network cable. PoE (Power over Ethernet) eliminates the need for a local power supply or any dedicated power wiring. Crestron PoE switches ([CEN-SW-POE-5](#) or [CEN-SWPOE-16](#)<sup>[3]</sup>) offer a total networking solution with built-in PoE for multiple touch screens. A PoE Injector ([PWE-4803RU](#)<sup>[3]</sup>) is also available to support a single touch screen.

*Note: PoE+ is required when connecting a light bar or hallways sign via USB. Refer to the "Power" specifications for additional details.*

## Enterprise Grade Security

Crestron touch screens employ enterprise-grade networking with robust security features such as 802.1X authentication, TLS encryption, HTTPS connectivity, and Active Directory® integration. These features are imperative to protect your network against service interruptions and malicious intrusions, and to ensure compliance with your organization's stringent network policies. Cloud-based provisioning and management streamlines the process of configuring and monitoring every touch screen on the network and keeping them updated. Additional support for SNMP allows every touch screen to be monitored by your IT administrator alongside every other device on the network.

## XiO Cloud™ Connected

XiO Cloud is Crestron's unifying cloud-based platform for remotely provisioning, monitoring, and managing Crestron devices across an enterprise or an entire client base. XiO Cloud enables installers and IT managers to deploy and manage thousands of devices in the amount of time it would ordinarily take to manage just one. It provides a zero-touch solution that allows complete configuration of device settings without any hardware in hand, then simply connect each device on site and let XiO Cloud push out the settings, licenses, drivers, and firmware updates – automatically and securely – for a quick and painless, ready-to-use deployment.

Ongoing XiO Cloud services facilitate daily management and monitoring of every device through a single dashboard with comprehensive reporting and logging, live status viewing and alerts, performance metrics and analytics, scheduled actions and updates, and more. As requirements grow and evolve, new features and functionality can be added easily to one or many devices at any time without ever going on site. XiO Cloud is a subscription-based service offering an adaptable SaaS (Software as a Service) solution with graduated levels of functionality and unlimited

scalability.

## Wall or Lectern Mounting Options

Using the bracket provided, the TSW-1060 is easily installed over a 2-gang or 3-gang US electrical box, or a 2-gang European or UK electrical box. The same bracket allows for installation in a wooden lectern or podium over a rectangular cutout. When installed, the touch screen protrudes just 1/2 inch from the mounting surface and latches firmly into its mounting bracket leaving no visible screws for an ultra clean appearance. A security latch option is included to deter unauthorized removal of the touch screen.

Additional mounting options are afforded using the [TSW-UMB-60](#) Universal Mounting Bracket. By itself, the TSW-UMB-60 provides a post-construction solution for retrofitting the TSW-1060 into existing drywall. For pre-construction applications that don't require a back box, the TSW-UMB-60 can be used along with a [TSW-UMB-60-PMK](#) Pre-Construction Mounting Kit. Masonry and concrete applications are accommodated using the TSW-UMB-60 along with a [TSW-UMB-60-BBI](#) back box. The TSW-UMB-60 is compatible with [TSW-560](#), [TSW-760](#), [TSW-1060](#), [TSS-7](#), and [TSS-10](#) series touch screens, making it easy to swap out devices at any time.<sup>[8]</sup>

For impenetrable surfaces, such as glass, granite, or marble, or for applications requiring ADA compliance, Crestron offers the Multi-Surface Mount Kit ([TSW-760/1060-MSMK](#)<sup>[3]</sup>). This option allows for attaching securely to virtually any smooth, flat surface without screws, providing an ideal solution for modern offices with glass walls or historically significant spaces where cutting and drilling is prohibited. It can also be mounted over a conventional electrical box. When installed, the touch screen is angled upwards at a 20° tilt to allow for mounting at an ADA approved height.

When installing the TSW-1060 in place of an older Crestron touch screen ([APAD](#), [GT-1000](#), [LC-1000](#), [TPS-4L](#), [TPS-6L](#), [TPS-2000L](#), or [TPS-3100L](#)), Crestron offers Retrofit Mounting Brackets ([TSW-60-RMB](#) series<sup>[3]</sup>), which facilitate replacement without having to tear out the old mounting hardware or patch the wall.

## Tabletop Option

Using the optional Tabletop Kit ([TSW-1060-TTK](#)<sup>[3]</sup>), the TSW-1060 becomes a stylish, freestanding touch screen that fits perfectly on a table, desk, or countertop. It can even be permanently attached to the surface using the optional Swivel Mount Kit ([TSW-560/760/1060-SMK](#)<sup>[3]</sup>).

## Rack Mount Option

The TSW-1060 can be mounted in a 19" EIA equipment rack using the optional Rack Mount Kit ([TSW-1060-RMK-2](#)<sup>[3]</sup>). When rack mounted, the touch screen occupies four rack spaces.

## SPECIFICATIONS

### Touch Screen Display

**Display Type:** TFT active matrix color LCD  
**Size:** 10.1 inch (257 mm) diagonal  
**Aspect Ratio:** 16:10 WXGA  
**Resolution:** 1280 x 800 pixels  
**Brightness:** 400 nits (cd/m<sup>2</sup>)  
**Contrast:** 950:1  
**Color Depth:** 24-bit, 16.7M colors  
**Illumination:** Edgelit LED w/auto-brightness control  
**Viewing Angle:** ±80° horizontal, ±80° vertical  
**Touch Screen:** Projected capacitive, 5-point multi-touch capable

### Buttons

**Hard Keys:** (5) Projected capacitive pushbuttons, backlit w/auto-brightness control, per-button show/hide (backlight enable/disable), pre-labeled with icons for “Power”, “Home”, “Lights”, “Up”, and “Down”  
**Reset:** (1) Miniature pushbutton on rear panel for hardware reset

### Graphics Engine

Crestron Smart Graphics, multi-language web browser<sup>[1]</sup>, multi-language on-screen keyboard, screensaver, single scalable streaming video window, native Sonos app<sup>[1]</sup>, native room scheduling application<sup>[4]</sup>, native Zoom Rooms app, setup and diagnostics via web browser or onscreen UI

### Room Scheduling Support

**Crestron Scheduling App:** Crestron Fusion, Microsoft Exchange & Office 365, Google Calendar & G Suite (IBM® Notes® and CollegeNET® 25Live® are also supported through Crestron Fusion On-premises only)<sup>[4]</sup>

### Languages

**Smart Graphics:** Arabic, Chinese (Simplified), Chinese (Traditional), Czech, Danish, Dutch, English (UK), English (US), Finnish, French, German, Greek, Hebrew, Hungarian, Italian, Japanese, Korean, Norwegian, Polish, Portuguese, Portuguese (Brazilian), Romanian, Russian, Slovak, Spanish, Swedish, Thai  
**On-Screen Keyboard:** Arabic, Chinese (Simplified), Croatian, Czech, Danish, Dutch, English (UK), English (US), Finnish, French (Canada), French (Switzerland), German, Hebrew, Hungarian, Italian, Japanese, Norwegian Bokmal, Polish, Portuguese, Russian, Serbian, Spanish, Swedish, Turkish  
**Voice Recognition:** Afrikaans (South Africa); Chinese, Mandarin (China, Simplified); Chinese, Mandarin (Hong Kong, Simplified); Chinese, Mandarin (Taiwan, Traditional); Chinese, Yue (Hong Kong, Traditional); Czech (Czech Republic); Dutch (Netherlands); English (Australia); English (Canada); English (Generic); English (India); English (New Zealand); English (South Africa); English (UK); English (US); French (France); German (Germany); isiZulu (South Africa); Italian (Italy); Japanese (Japan); Korean (South Korea); Polish (Poland); Portuguese (Brazil); Russian (Russia); Spanish (Spain); Turkish (Turkey)  
**Web Browser:** Arabic, Bulgarian, Catalan, Chinese, Croatian, Czech, Danish, Dutch, English, Filipino, Finnish, French, German, Greek, Hebrew, Hindi, Hungarian, Indonesian, Italian, Japanese, Korean, Latvian, Lithuanian, Norwegian Bokmal, Pashto, Persian, Polish, Portuguese, Romanian,

Romansh, Russian, Serbian, Slovak, Slovenian, Spanish, Swedish, Thai, Turkish, Ukrainian, Vietnamese

**Room Scheduling:** Chinese (Simplified), Chinese (Traditional), Danish, Dutch (Netherlands), English (US), English (UK), French, German, Hebrew, Italian, Japanese, Korean, Norwegian, Portuguese (Brazil), Portuguese (Portugal), Russian, Spanish, Swedish

### Memory

**RAM:** 2 GB DDR3L  
**Storage:** Firmware/Application: 4 GB Class 10 microSD card;  
 System: 4 GB eMMC  
**Maximum Project Size:** 600 MB

### Communications

**Ethernet:** 10/100 Mbps, auto-switching, auto-negotiating, auto-discovery, full/half duplex, TCP/IP, UDP/IP, CIP, DHCP, SSL, TLS, SSH, SFTP (SSH File Transfer Protocol), IEEE 802.1X, SNMP, IPv4 or IPv6, Active Directory authentication, HTTPS web browser setup, XiO Cloud client, IEEE 802.3at compliant  
**USB:** USB 2.0 host for room availability light bar or hallway sign<sup>[5]</sup>  
**Bluetooth:** Crestron PinPoint proximity detection beacon<sup>[2,7]</sup>

### Streaming Decoder

**Video Formats:** H.264 (MPEG-4 part 10 AVC), MJPEG  
**Audio Formats:** AAC stereo  
**Bitrates:** Up to 25 Mbps (20 Mbps maximum recommended)  
**Streaming Input Resolutions:** Up to 1920x1080@30fps  
**Streaming Protocol:** RTSP

### Streaming Encoder & Camera<sup>[2]</sup>

**Camera Resolution:** 5.0 MP  
**Field of View:** 50° horizontal  
**Video Format:** H.264 (MPEG-4 part 10 AVC)  
**Streaming Output Resolution:** 1280x720  
**Streaming Protocol:** RTSP, ONVIF discovery

### Audio

**Features:** Built-in microphone and speakers, Rava SIP Intercom, multi-language voice recognition<sup>[1,2]</sup>  
**Audio Feedback Formats:** MP3

### Connectors

**LAN PoE:** (1) 8-pin RJ45 connector, female, with 2 LED indicators; 10Base-T/100Base-TX Ethernet port and PoE+ PD port; Green and yellow LEDs indicate Ethernet port status  
**USB:** (1) USB Type A connector, female; USB 2.0 host port; For optional room availability light bar or hallway sign<sup>[5]</sup>

## Power

---

### Power over Ethernet:

IEEE 802.3at Type 2 compliant PoE+ PD (Powered Device);

- Normally requests 15 Watts from an 802.3at Type 2 PSE with LLDP advanced power management;
- With room scheduling and USB enabled, requests 18 Watts from an 802.3at Type 2 PSE with LLDP;
- Requests 30 Watts (PoE+ Class 4) from an 802.3at Type 2 PSE without LLDP;
- Requests 15.4 Watts (PoE Class 0) from an 802.3af (or 802.3at Type 1) PSE

*Note: Enabling the USB port requires use of an 802.3at Type 2 PoE+ PSE.*

## Environmental

---

**Temperature:** 32° to 112° F (0° to 45° C)

**Humidity:** 10% to 90% RH (non-condensing)

**Heat Dissipation:** 44 BTU/hr

## Construction

---

**Housing:** Plastic, smooth black or white finish, edge-to-edge glass with black or white surround

**Mounting:** Surface mount over a 2 or 3-gang US electrical box, 2-gang European (DIN 49073) electrical box, or 2-gang UK (BS 4662) electrical box;  
Lectern mount over a 2-1/5" H x 3-3/4" W (56 mm H x 96 mm W) cutout; 1-3/8" (35 mm) minimum mounting depth;  
Additional wall mount, surface mount, rack mount, and tabletop options available separately

## Dimensions

---

**Height:** 6.59 in (168 mm)

**Width:** 10.23 in (260 mm)

**Depth:** 1.52 in (39 mm)

*Dimensions do not include the mounting bracket or add-on accessories*

## Weight

---

23.9 oz (675 g)

## Compliance

---

UL Listed for US & Canada, IC, CE, FCC Part 15 Class B digital device

## Notes:

1. Voice recognition, web browsing, weather information, Sonos app, and certain other functions require an Internet connection.
2. The camera, microphone, and Bluetooth transceiver may each be defeated programmatically at any time. For applications demanding an extra measure of privacy, Crestron offers models [TSW-1060-NC-B-S](#) and [TSW-1060-NC-W-S](#), which have no physical camera, microphone, or Bluetooth transceiver installed.
3. Item(s) sold separately. Refer to each product's spec sheet for complete information.
4. Room Scheduling Mode requires the TSW-1060 to be designated exclusively for room scheduling use, which precludes use of certain features and functions described in this spec sheet. For design assistance, contact the Crestron True Blue support team at <https://www.crestron.com/support>.
5. The light bar and hallway sign accessories are sold separately. The TSW-1060 must be powered by a PoE+ power source when a light bar or hallway sign is connected. Only one light bar or hallway sign may be connected to the TSW-1060. Use of either accessory precludes use of the other without the addition of a custom-programmed control system and Cresnet wiring for the hallway sign. Refer to the Accessories section for a list of all available options. Refer to each accessory's spec sheet for further information.
6. A complete Zoom Rooms solution requires a mini PC or Mac computer running Zoom software, a Zoom Rooms subscription, plus additional peripherals and cables. Visit <https://zoom.us/zoomrooms> for more information about Zoom Rooms capabilities, hardware requirements, and subscription plans. For design assistance, contact the Crestron True Blue support team at <https://www.crestron.com/support>.
7. Onboard PinPoint beacon functionality is not currently supported and will be enabled through a future update. When enabled, the TSW-1060 will provide an integrated, equivalent alternative to the standalone PP-100-W beacon. For more details, refer to the [PP-100-W](#) spec sheet. Bluetooth technology is used solely for proximity detection and does not transmit or receive any control, multimedia, or personal data. PinPoint beacons are only visible to Bluetooth enabled devices that are specifically programmed and configured to work with them.
8. The [TSW-UMB-60](#), [TSW-UMB-60-PMK](#), and [TSW-UMB-60-BBI](#) are all sold separately. The TSW-UMB-60 is also compatible with older [TSW-UMB-PMK](#) preconstruction mounting kits and [TSW-550-BBI](#) back boxes, allowing the TSW-1060 touch screen to be installed in place of a previous generation TSW-5xx series touch screen, or any other device that was originally installed using a TSW-UMB-PMK or TSW-550-BBI, without modification to the wall. If replacing another older Crestron device, use the appropriate [TSW-60-RMB](#) retrofit mounting bracket (sold separately).

Crestron, the Crestron logo, Crestron Fusion, DigitalMedia, PinPoint, Rava, Smart Graphics, SmartObjects, Sonnex, and XiO Cloud are either trademarks or registered trademarks of Crestron Electronics, Inc. in the United States and/or other countries. Bluetooth is either a trademark or registered trademark of Bluetooth SIG, Inc. in the United States and/or other countries. CollegeNET and 25Live are either trademarks or registered trademarks of CollegeNET, Inc. in the United States and/or other countries. Google, G Suite, and Google Calendar are either trademarks or registered trademarks of Google LLC in the United States and/or other countries. IBM and Notes are either trademarks or registered trademarks of International Business Machines Corporation in the United States and/or other countries. Microsoft, Active Directory, Office 365, and Outlook are either trademarks or registered trademarks of Microsoft Corporation in the United States and/or other countries. Sonos is either a trademark or registered trademark of Sonos, Inc. in the United States and/or other countries. Wi-Fi is either a trademark or registered trademark of Wi-Fi Alliance in the United States and/or other countries. Zoom and Zoom Rooms are either trademarks or registered trademarks of Zoom Video Communications, Inc. in the United States and/or other countries. Other trademarks, registered trademarks, and trade names may be used in this document to refer to either the entities claiming the marks and names or their products. Crestron disclaims any proprietary interest in the marks and names of others. Crestron is not responsible for errors in typography or photography. Specifications are subject to change without notice.  
©2018 Crestron Electronics, Inc.

## MODELS & ACCESSORIES

### Available Models

---

TSW-1060-B-S: 10.1" Touch Screen, Black Smooth  
TSW-1060-W-S: 10.1" Touch Screen, White Smooth

### Available Accessories

---

TSW-1060-TTK Series: Tabletop Kit  
TSW-560/760/1060-SMK: Swivel Mount Kit for TSW-1060-TTK Series  
TSW-UMB-60: Universal Mounting Bracket for TSW-x60 Series  
TSW-UMB-60-PMK: Pre-Construction Mounting Kit for TSW-UMB-60  
TSW-UMB-60-BBI: Wall Mount Back Box for TSW-UMB-60  
TSW-760/1060-RMB-1: Retrofit Mounting Bracket – Converts APAD, CT/LC-1000, or TPS-2000L to TSW-1060  
TSW-760/1060-RMB-2: Retrofit Mounting Bracket – Converts TPS-4L to TSW-1060  
TSW-1060-RMB-3: Retrofit Mounting Bracket – Converts TPS-6L to TSW-1060  
TSW-1060-RMB-4: Retrofit Mounting Bracket – Converts TPS-3100L to TSW-1060  
TSW-760/1060-MSMK Series: Multi-Surface Mount Kit  
TSW-560/760-RMK-2: Rack Mount Kit  
PWE-4803RU: PoE Injector  
CEN-SW-POE-5: 5-Port PoE Switch  
CEN-SWPOE-16: 16-Port Managed PoE Switch  
CEN-NVS200: Network Video Streamer  
DM-TXRX-100-STR: HD Streaming Transmitter/Receiver  
DM-RMC-100-STR: HD Streaming Receiver & Room Controller 100  
SW-XIOC-S Series: XiO Cloud™ Standard Provisioning and Management Service for one device  
SW-XIOC-P Series: XiO Cloud™ Premium Provisioning and Management Service for one device  
SW-FUSION-C-3: Crestron Fusion® Cloud; 250 rooms; 3-year service, support, and updates  
SW-FUSION-P-L: Crestron Fusion® On-premises; Unlimited rooms; lifetime service, support, and updates  
SW-HS-x-C Series: Crestron Fusion® Cloud Room Scheduling for one touch screen  
SW-HS-x-P Series: Crestron Fusion® On-premises Room Scheduling for one touch screen  
TSW-1060-LB Series: Room Availability Light Bar  
SSC Series: Room Availability Hallway Sign, Ceiling Mount  
SSW Series: Room Availability Hallway Sign, Wall Mount  
SIW-100: Room Availability Status Indicator, Wall Mount

[www.avsupply.com](http://www.avsupply.com)



