

CPS4.10



- 4 x 1000 W
- High Efficient Class-D Design
- Optimized for permanent installation
- EN 54-16: 2008
- Optional Remote Control Module RCM-810



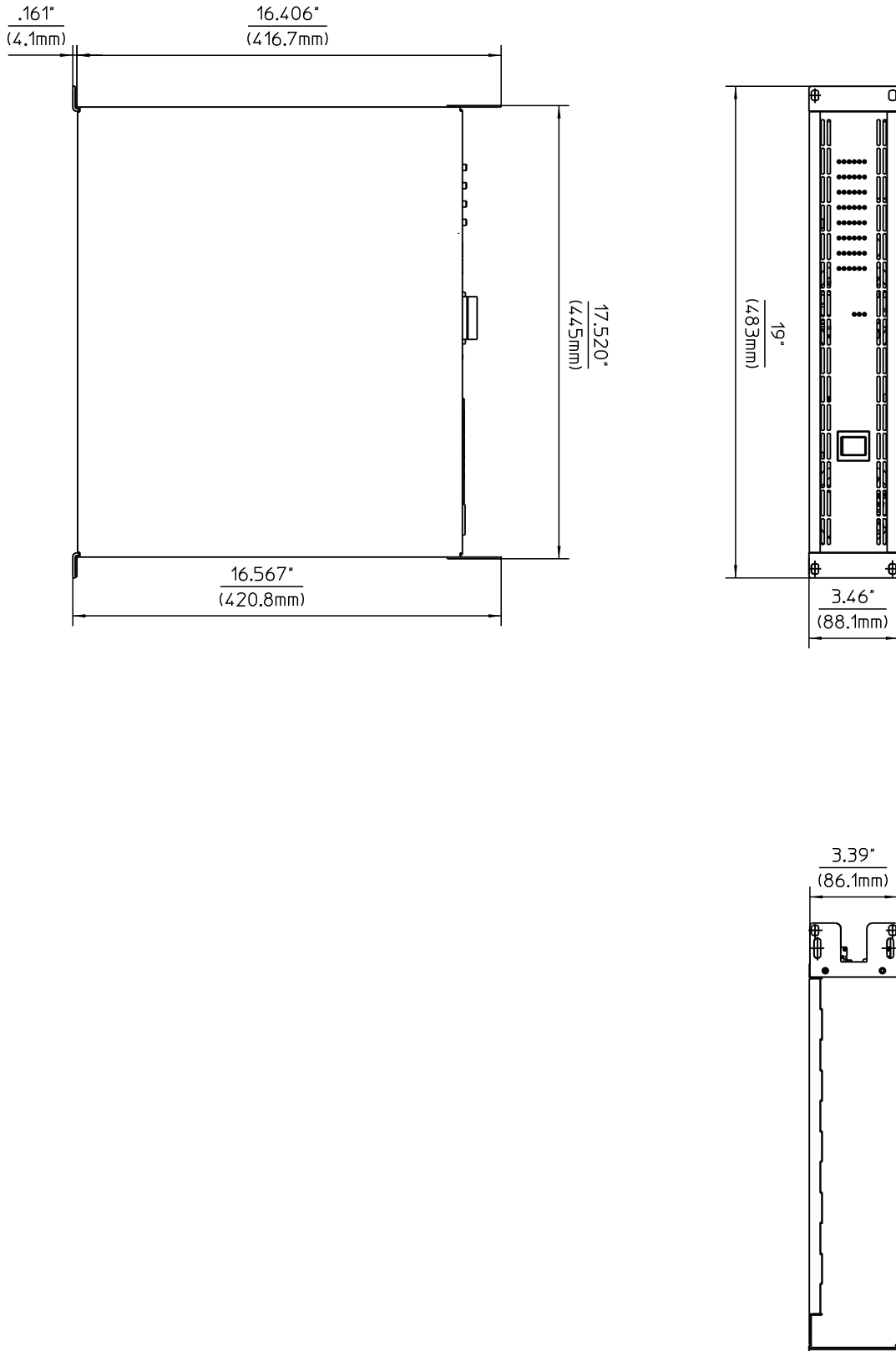
The Electro-Voice CPS4.10 amplifier offers four independent Class-D Variable Load Drive (VLD) amplifier blocks, each one capable of delivering up to 1000 Watts into Low-Z or High-Z loads. Per default, each channel can be configured individually for max. power output into either 2 Ω , 4 Ω , 70V- or 100V-networks without involvement of any output transformers. Being designed for professional audio installation market, special care was taken for long term cost of ownership parameters: In addition to remarkably low current consumption and heat dissipation, the CPS4.10 provides remote standby switching with just 5 Watts consumption in standby mode. An optional remote control module RCM-810 provides control and supervision features via IRIS-Net, including monitoring of amplifier status and real time load supervision. In addition, via RCM-810 the Variable Load Drive characteristics can be set for max. power output into any load between 2 Ω and 10 Ω , in steps of 0.1 Ω .

Technical specifications

| | Low impedance mode | | | High impedance mode | |
|--|--|-------------------|----------------------|---------------------|--------------------|
| | 2 Ω | 4 Ω | 8 Ω | 70 V/10 Ω | 100 V/20 Ω |
| Maximum midband output power, THD = 1%, 1 kHz, 4 channels driven | 1000 W | 1000 W | 500 W VLD: 1000 W | 500 W | 500 W |
| Rated output power, THD < 0.3%, 20–20 000 Hz, 4 channels driven | 900 W | 900 W | 450 W VLD: 900 W | 900 W | 900 W |
| Maximum bridged output power, THD = 1%, 1 kHz | - | 2000 W | 2000 W | 2000 W/10 Ω | 2000 W/20 Ω |
| Alarm power rating (according to EN 54-16) | - | 350 W | 350 W | 350 W | 350 W |
| Maximum RMS voltage swing, THD = 1%, 1 kHz | 45 V | 63 V | 63 V VLD: 89 V | 70 V | 100 V |
| Power Bandwidth, THD = 1%, ref. 1 kHz, half power at rated load | 10–25000 Hz | | | 50–25000 Hz | |
| Voltage gain, ref. 1 kHz | 32 dB | 32 dB | 32 dB | 33 dB | 36 dB |
| Input Sensitivity, rated power, 1 kHz | 1.1 V (+3.0 dBu) | 1.55 V (+6.0 dBu) | 1.55 V (+6.0 dBu) | 1.55 V (+6.0 dBu) | 1.55 V (+6.0 dBu) |
| THD at rated output power, MBW = 80 kHz, 1 kHz | < 0.05% | | | | |
| IMD-SMPTE, 60 Hz, 7 kHz | < 0.05% | | | | |
| DIM30, 3.15 kHz, 15 kHz | < 0.02% | | | | |
| Maximum input level | +22 dBu (9.76 V _{rms}) | | | | |
| Crosstalk, ref. 1 kHz, at rated output power | < -80 dB | | | | |
| Frequency response, ref. 1 kHz, 8 Ω load | 15–30000 Hz (\pm 1 dB) | | | | |
| Input impedance, active balanced | 20 k Ω | | | | |
| Damping factor, 1 kHz, 8 Ω | > 240 | | | | |
| Slew rate | 28 V/ μ s | | | | |
| Signal-to-noise ratio (A-weighted) | 101 dB | 103 dB | 103 dB | 104 dB | 106 dB |
| Output noise, A-weighted | < -66 dBu | < -65 dBu | < -65 dBu | < -65 dBu | < -64 dBu |
| Output stage topology | Class D | | | | |
| Power requirements | 220-240 V, 50-60 Hz or 120 V, 50-60 Hz or 100 V, 50-60 Hz | | | | |
| In-rush current | 27 A | | | | |
| In-rush current, after five-second power cycle | 14 A | | | | |
| Power consumption, 1/8 maximum output power | 840 W | | | | |
| Protection | Audio Limiters, High Temperature, DC, HF, Short Circuit, Peak Current Limiters, Inrush Current Limiters, Turn-on Delay, Mains Circuit Breaker Protection, Mains Over/Undervoltage Protection | | | | |
| Electromagnetical environment | E1, E2, E3 | | | | |
| Cooling | Front-to-Rear, temperature controlled fans | | | | |

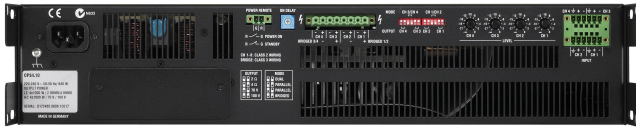
| | Low impedance mode | | | High impedance mode | |
|---|-----------------------|------------|------------|---------------------|-------------------|
| | 2 Ω | 4 Ω | 8 Ω | 70 V/10 Ω | 100 V/20 Ω |
| Operating temperature | +5° to +40° C | | | | |
| Safety class | I | | | | |
| Product dimensions (Width x Height x Depth) | 483 x 88.1 x 420.8 mm | | | | |
| Net weight | 11.1 kg | | | | |

* Depending on the ambient temperature, the unit might not operate continuously at 2 Ω load in Dual Mode or 4 Ω load in Bridged Mode. In addition input power exceeds 1.1 times rated power consumption with at 2 Ω load in Dual Mode or 4 Ω load in Bridged Mode.



Dimensions

System overview



Rear view

Certifications and approvals

EN 54-16: 2008

Parts included

| Quantity | Component |
|----------|---|
| 1 | Power amplifier |
| 1 | Power cord |
| 1 | Output Euroblock connector 8-pole (Phoenix, IC 2,5/8-STF-5,08, 1825378, F.01U.103.369) with Euroblock connector housing (Phoenix, KGS-MSTG 2.5/8, 1783779, F.01U.103.370) |
| 2 | Input Euroblock connector 6-pole (Phoenix, MC 1,5/6-STF-3,81, 1827745, F.01U.104.179) |
| 1 | Power remote Euroblock connector 2-pole (Phoenix, MC 1,5/2-STF-3,81, 1827703, F.01U.103.533) |
| 1 | User manual |

Ordering information

CPS4.10 100V

4-channel Class-D amplifier, 2RU , per channel configurable 2/4Ohm/70V/100V, slot f. optional RCM810 remote module; 4 x 1000 W
Order number **F.01U.101.296**

CPS4.10 120V

4-channel Class-D amplifier, 2RU , per channel configurable 2/4Ohm/70V/100V, slot f. optional RCM810 remote module; 4 x 1000 W
Order number **F.01U.101.295**

CPS4.10 220-240V

4-channel Class-D amplifier, 2RU , per channel configurable 2/4Ohm/70V/100V, slot f. optional RCM810 remote module; 4 x 1000 W
Order number **F.01U.101.294**

Accessories

LML-1

Line measuring load
Order number **F.01U.266.132**

RCM-810

RCM-810 Remote Control Module for IRIS-Net
Order number **F.01U.101.277**

RMK-15

Rack Mount Kit for amplifiers, Length 15,5“; 1L/1R
Order number **F.01U.135.402**

Represented by:

Germany:

Bosch Sicherheitssysteme GmbH
Robert-Bosch-Ring 5
85630 Grasbrunn
Germany

Bosch Security Systems, Inc.
12000 Portland Avenue South
Burnsville MN 55337
USA

www.electrovoice.com