



Commander NVR

Enterprise Linux Recording Solution

Power. Speed. Redefined

Revolutionary High Megapixel Recording and Management System



Linux-embedded



F.R. Mega Optimized



250Mbps throughput



RAID 0, 1, 5, 10



Command Chain



Dual Gigaports



Centralized E-Map



Event Respond



400 ch (live)
100 ch (playback)



Image Fusion



Twin Client



Bandwidth control

Win / Mac Client

Browser

Windows Only

Mobile Apps

iPad / iPhone
android

Technology Partners

ONVIF
ImmerVision Enables

Camera Support



Design Highlights

Megapixel Recording Powerhouse



EverFocus Commandern NVR utilizes a redefined recording engine named File Ring. File Ring is engineered from scratch to handle high megapixel recordings by changing how hard drives store and retrieve video data. It can process large amount of data throughput boosting the Commanders recording performance to 64 2 - Megapixel cameras (H.264, 15 fps, moderate traffic).

| No. | Name | Address | Conn.Status | Rec.Status | Framerate | Bitrate |
|-----|--------------|---------------|-------------|------------|-----------|-------------|
| 45 | Field Cam 45 | 192.168.0.159 | 🟢 | 🔴 | 8.0 fps | 3200.0 Kbps |
| 46 | Field Cam 46 | 192.168.2.168 | 🟢 | 🔴 | 10.0 fps | 3800.2 Kbps |
| 47 | Field Cam 47 | 192.168.1.128 | 🟢 | 🔴 | 9.0 fps | 3350.8 Kbps |
| 48 | Field Cam 48 | 192.168.0.235 | 🟢 | 🔴 | 7.0 fps | 3546.0 Kbps |
| 49 | Field Cam 49 | 192.168.1.240 | 🟢 | 🔴 | 8.0 fps | 3500.0 Kbps |
| 50 | Field Cam 50 | 192.168.0.158 | 🟢 | 🔴 | 10.0 fps | 3876.0 Kbps |
| 51 | Field Cam 51 | 192.168.0.160 | 🟢 | 🔴 | 9.0 fps | 3200.0 Kbps |
| 52 | Field Cam 52 | 192.168.0.161 | 🟢 | 🔴 | 8.0 fps | 3800.2 Kbps |
| 53 | Field Cam 53 | 192.168.1.162 | 🟢 | 🔴 | 10.0 fps | 3350.8 Kbps |
| 54 | Field Cam 54 | 192.168.1.163 | 🟢 | 🔴 | 9.0 fps | 3546.0 Kbps |
| 55 | Field Cam 55 | 192.168.0.164 | 🟢 | 🔴 | 7.0 fps | 3500.0 Kbps |
| 56 | Field Cam 56 | 192.168.1.165 | 🟢 | 🔴 | 8.0 fps | 3876.0 Kbps |
| 57 | Field Cam 57 | 192.168.2.166 | 🟢 | 🔴 | 10.0 fps | 3200.0 Kbps |
| 58 | Field Cam 58 | 192.168.1.167 | 🟢 | 🔴 | 9.0 fps | 3800.2 Kbps |
| 59 | Field Cam 59 | 192.168.0.168 | 🟢 | 🔴 | 8.0 fps | 3350.8 Kbps |
| 60 | Field Cam 60 | 192.168.1.170 | 🟢 | 🔴 | 10.0 fps | 3546.0 Kbps |
| 61 | Field Cam 61 | 192.168.0.171 | 🟢 | 🔴 | 9.0 fps | 3500.0 Kbps |

64x 5-Megapixel recording utilizing F.R. Mega Optimized recording engine

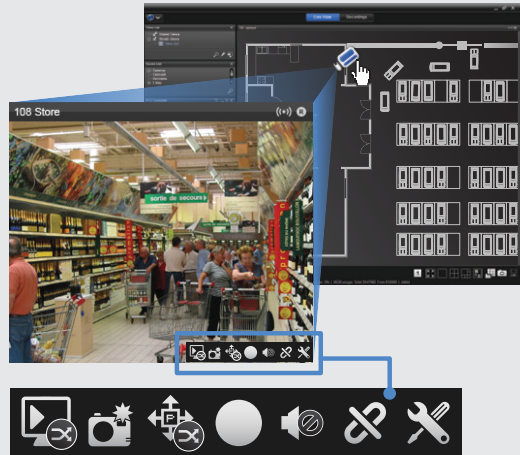
Central Remote Management



The Commander NVR is built with highly efficient data and event management architecture. User can select smaller bandwidth profile for remote viewing to eliminate internet bottlenecks without affecting the recorded videos.



In addition, the Commander is equipped with Command Chain Technology which can synchronize user accounts and critical events across 100 servers, 400 channel live views and 100 channel playback simultaneously.



Centralized E-Map with video popup and tool bar for users to quickly access commonly used functions

Turn, Scale and Stitch Cameras Together



Experience a world without camera dead angles and narrow hallway views. Image Fusion Technology can manipulate camera views by changing its viewing angle and image size make viewing easier in both live view and playback. Moreover, users can stitch multiple cameras together to form a unified single view from up to 10 different cameras.

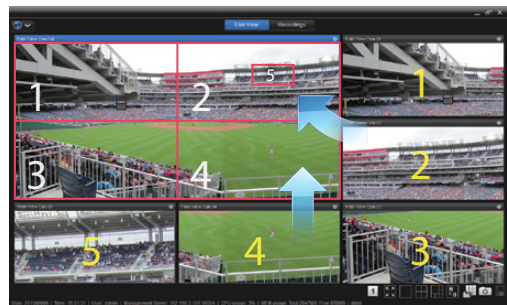


Image Fusion combines camera 1 to 5 into a single view for easier viewing

Success Stories

Industrial



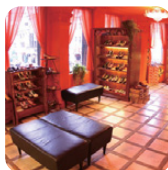
LG Powercom
356CH (Korea)

Hospital



El Zerayeen Hospital
560CH (Egypt)

Retail



Macanna Inc.
400CH (Taiwan)

Education



Fujian Exam Center
18,000CH (China)

Transportation



RapidKL
670CH (Malaysia)

Government



TRE Parana
970CH (Brazil)

Hotel



Cristal Hotel
100CH (USA)

System Architecture



Server Highlights

- Linux embedded
- Support 50 brands of IP manufacturers and over 1310 camera models
- Onvif compatible
- Record up to 64 megapixel cameras (through license upgrade)
- High throughput (up to 250Mbps)
- Chain Technology – Synchronize user accounts across 100 servers through a single server instantly
- Remote server configuration
- Recording in external storage (DAS, iSCSI)
- Redundant power (NT-8040RP only)
- Centralized I/O and event respond systems
- Dual gigabit Ethernet ports
- Camera Dual (2nd) Stream support
- Backup to FTP
- Support continuous, scheduled, event based and I/O based recording
- Synchronized audio and video recording
- Support full SDK
- License management include transfer license



Client Highlights

- Windows and Mac compatible
- Manage up to 100 servers, 400 channels live view and 100 channels playback simultaneously.
- Image Fusion Technology – stitch up to 10 cameras together to form a consecutive single view for easier viewing
- Panorama 360° PTZ (Immervision and VIVOTEK fisheye)
- Support Stream Profile for remote live view bandwidth control (Original / 300 kbps / 100 kbps)
- Digital and Optical PTZ
- Popup event playback
- Support mobile client for iPhone / iPad / Android
- Centralized E-map
- Centralized I/O Panel and Event Panel
- Public View and Private View for each user
- View Tour to loop through selected Views
- Instant Playback
- Save video clips into AVI, ASF or MOV format
- Intelligent motion/ event search in playback to quickly find the subject of interest
- Twin Clients to support identical, full featured software client and web client
- Joystick

External Supports



- External storage support through 3rd party DAS, iSCSI
- Support APC Uninterrupted Power Supply (Smart-UPS 750 VA / APC Back-UPS 500 ES / APC Smart UPS 1500 / APC Smart UPS 3000)

Specification

| Model | | Commander NVR |
|--------------------------------------|------------|--|
| Product Image | |   <p>Rack-mount 1U</p> |
| Part Number | Server | NVR-4000 |
| | IP License | NVR-4016UP/NVR-4032UP/NVR-4060UP |
| CPU Model | | Intel® Atom™ processor D525 (1M Cache, 1.80 GHz) |
| Max IP License (through upgrade) | | 64 |
| Base IP License (included in server) | | 4 |
| Server O/S | | Embedded Linux |
| Video Compression | | H.264, MPEG4, MJPEG |
| Recording Performance | | 250 Mbps (MAX), 150 Mbps (OPTIMAL) * |
| Removable HDD Trays | | 4x SATA II |
| HDD Support | | 3TB per drive (Max 4 drives) |
| RAID | | 0, 1, 5, 10 |
| External Storage | | DAS, iSCSI |
| External Ports | | 6 x USB 2.0 (for mouse, UPS); 1 x eSATA (for DAS) |
| Ethernet (NIC) | | 2 x Gigabits Ports |
| Voltage | | 100 - 240V |
| Power Consumption | | 200W |
| Dimensions (H x W x D) | | 44.5 x 441 x 428.8 mm |
| Weight (without HDD) | | 6.235 kg (13.75lbs) |
| Temperature | | 0°C ~ 40°C (32°F ~ 104°F) |
| Humidity | | 5 ~ 95 RH |
| Supported Language (21 languages) | | Chinese (Simplified), Chinese (Traditional), Czech, Dutch, English, Finnish, French, German, Hungarian, Italian, Japanese, Korean, Polish, Portuguese (Brazil), Russian, Serbian, Spanish, Slovenian, Swedish, Thai, Turkish |

*Max recording throughput (250 Mbps): Approx. 64ch 5-Megapixel H.264 cameras at 10 fps when server is streaming out 16 channels of live video without playback.
Optimal recording throughput (150 Mbps): Approx. 64ch 2-Megapixel H.264 cameras at 15 fps when server is streaming out 128 channels of live video and 16 channel playback.

Client System Minimum Requirement

| | |
|-------------------------|---|
| Part Number | NVR-4000 |
| OS | Windows XP (32-bit) / Win7 (32 and 64-bit) / Mac OS X v10.6, 10.7 |
| CPU | Intel® Core™2 Duo Processor E6400 (2M Cache, 2.13 GHz, 1066 MHz FSB) * |
| RAM | 1GB |
| LAN Transmission Speed | 10/100/1000 Mbps (RJ45) |
| Remote Client | NuClient (Software), NuClient (Web), iViewer (Mobile App) |
| Web Client | Internet Explorer 8 and later, Firefox 4.0 ~ 9.0 (Windows version) |
| Mobile iViewer Platform |  iPad / iPhone  |