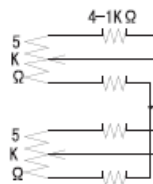


**SPECIFICATION**

		FOR 1/3" COLOR, B/W CAMERA	
1.	USE	FOR 1/3" COLOR, B/W CAMERA	
2.	FOCAL LENGTH	f= 6 ~ 90 mm	
3.	IRIS RANGE	F= 1.6 ~ CLOSE	
4.	IMAGE SIZE	φ 6 (4.8 x 3.6)	
5.	BACK FOCAL LENGTH	9.55 mm in air	
6.	FLANGE FOCAL LENGTH	12.5 mm in air	
7.	FOCUS RANGE	∞ ~ 1.2 m	
8.	FIELD ANGLE	DIA.	(W) 54.3 ° (T) 3.9 °
		HOR.	44.2 ° 3.1 °
		VER.	33.5 ° 2.4 °
9.	FIELD OF VIEW AT W.C.D.	DIA.	1,145.6 mm 78.0 mm
		HOR.	914.6 mm 62.4 mm
		VER.	682.0 mm 46.8 mm
10.	DISTORTION	-0.7 %	
11.	LENS CONSTRUCTION	11 GROUPS 14 ELEMENTS	
12.	CLEAR APERTURE	FRONT φ 4.6	REAR φ 10.6
13.	EXIT PUPIL POSITION	-113 mm (format)	
14.	WEIGHT	530 g (550 g)	

② MOTOR CABLE



- (+) GREEN FOCUS NEAR
- (+) BLACK FOCUS FAR
- (+) YELLOW ZOOM IN
- (+) RED ZOOM OUT
- (+) WHITE IRIS OPEN
- (+) BROWN IRIS CLOSE
- (+) ORANGE POT. SUPPLY
- BLUE FOCUS ERROR
- (-) PURPLE POT. RETURN
- GRAY ZOOM ERROR

F1.6/6~90mm

LMZ110M3R

LMZ110M3PR

**AUDIOVIDEO SUPPLY**  
 1-800-284-2288 sales@avsupply.com  
 www.avsupply.com

For design help, accessories or pricing, please contact:  
 sales@avsupply or call: 1-858-565-1101