



INNOVATIVE
HIGH DEFINITION SURVEILLANCE

KNC-VNi120HD

IP Vandalproof Dome Camera

www.ktncusa.com

- 1/2.8" SONY Exmor CMOS
- Member of Onvif
- 2.1 Megapixel
- f = 3.5 ~16mm, Varifocal / DC Iris Lens
- True Day & Night with ICR Mechanism
- IP66 (Weather Resistant)
- DC 12V Power

IP

HDTV / Megapixel

Network

AUDIOVIDEO SUPPLY

1-800-284-2288 sales@avsupply.com
www.avsupply.com

For design help, accessories or pricing, please contact:
sales@avsupply.com or call: 1-858-565-1101

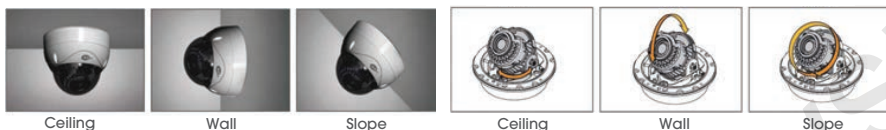


IP
HDTV / Megapixel
Network Cameras

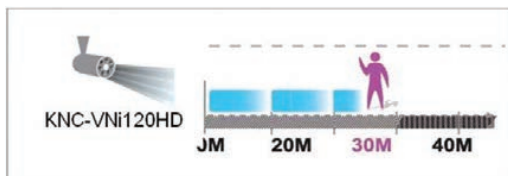
- 1/2.8" SONY Exmor CMOS
- Member of Onvif
- 2.1 Megapixel
- f = 3.5 ~ 16mm, Varifocal / DC Iris Lens
- True Day & Night with ICR Mechanism
- IP66 (Weather Resistant)
- DC 12V Power



3-Axis Rotating Mechanism



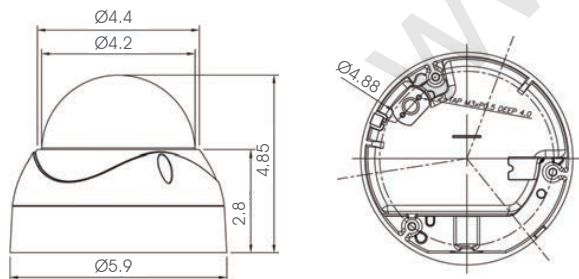
3-Axis gimbal bracket rotates and swivels horizontally and vertically, so that user can install the camera in any place with exact pictures needed.



0 Lux Min. illumination with 30 IR LEDs

KNC-VNi120HD is equipped with built-in 30 units of IR LEDs. It can capture clear image as far as 30m(100ft) away in total darkness.

General Feature Diagram Unit: (inch)



KNC-VNi120HD

IP Vandalproof Dome Camera



Technical Specification

Camera	Image Sensor	2.1 Megapixel, 1/2.8" SONY Exmor CMOS			
	Total Pixels (H x V)	2144 x 1588			
	Day & Night	True Day & Night with ICR Mechanism			
	Min. Illumination	0 Lux (IR LED On)			
	IR LED	Distance	30 IR LEDs	Max. 82ft (DSS: x4)	
	Shutter Speed	1/50 ~ 1/2000			
Lens	Lens	3.5 ~ 16 mm (3 MP)			
	Lens Type	Varifocal, DC Iris Lens			
Video	Maximum Resolution	H.264	1920 x 1080 (16:9)	MJPEG	1280 x 720 (16:9)
	Frame Rate	H.264	30fps	MJPEG	30fps
	Compression	H.264		MJPEG	
	Streaming	Dual-Stream at different frame rate and bandwidth			
	Digital Slow Shutter	Off, 2x, 4x			
Network	Image Settings	Brightness, Contrast, Saturation, Sharpness, White balance, Exposure control, Image rotation, Text and image overlay, Privacy masking			
	LAN	Ethernet 10/100 Base-T (RJ-45 Type)			
	Security	Multiple user access levels with password protection			
	Protocol	IPv4, HTTP, TCP, RTSP, RTP, UDP, IGMP, RTCP, SMTP, FTP, ICMP, DHCP, ARP, DNS, DDNS, HTTPS, UPnP			
Intelligent Video	ONVIF Compliant	Yes			
	Interface	OS	Windows XP, Vista, 7	Browser	Internet Explorer
	Video Motion Detection	Yes			
Alarm and Event	Alarm Triggers	Intelligent video, external inputs, manual triggers, network fail, reboot			
	Alarm Events	JPEG image upload via FTP & Email, notification via E-mail, external output activation			
General	Processors	CPU: ARM 926EJ-S			
	Memory	RAM: 128MB, Flash: 64MB			
	Power	PoE class 3 (IEEE 802.3af) DC12V 770 mA			
	Interface	Service video connector Power (DC 12V) Input Sensor Input x 1 / Alarm Output x 1 Status & Network LED			
	IP Rating	IP66 (Weather Resistant)			
	Operating Temperature	14 °F ~ 122 °F (-10 °C ~ 50 °C)			
	Dimension	Bubble(Ø4.2), Ø5.9 x 4.85 inch (Bubble(Ø107), Ø151 x 123.4 mm)			
	Weight	2.1 lbs (950 g)			

For design help, accessories or pricing, please contact:
sales@avsupply or call: 1-858-565-1101