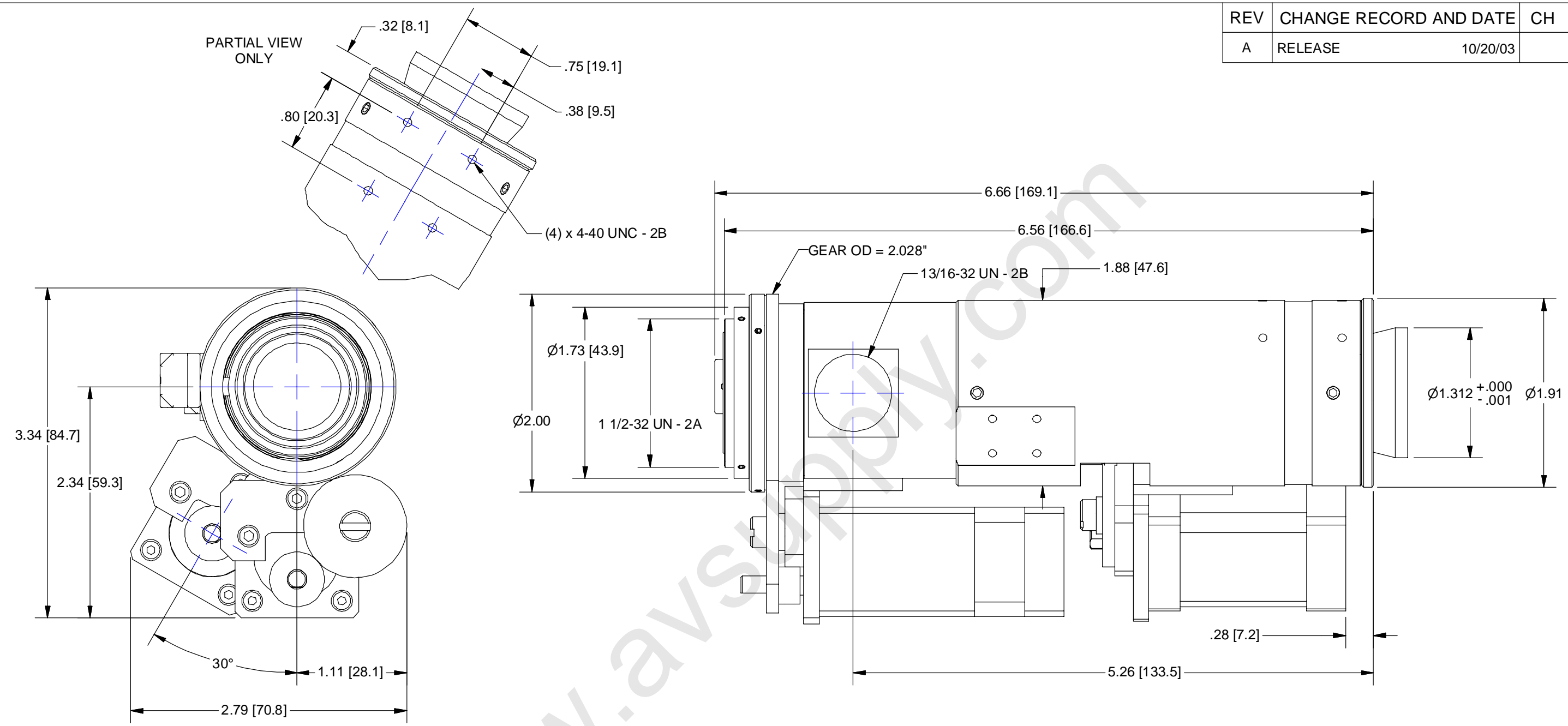
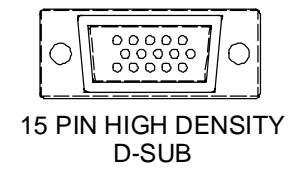


REV	CHANGE RECORD AND DATE	CH
A	RELEASE 10/20/03	



5-PHASE MOTOR PINOUT

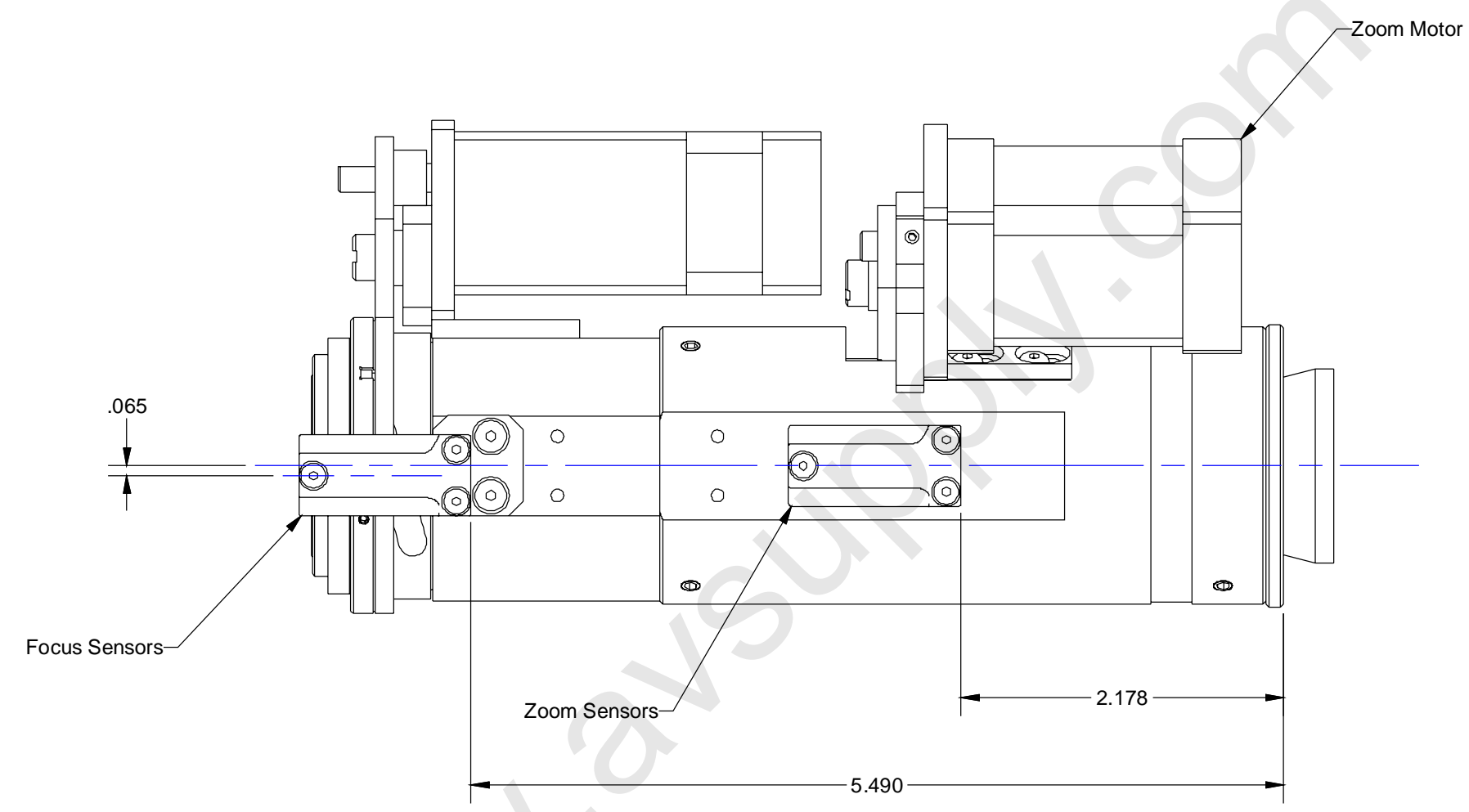
- PIN 3 = +5Vdc
- PIN 13 = COMMON
- PIN 8 = FAR LIMIT
- PIN 12 = NEAR LIMIT
- PIN 15 = MOTOR 1
- PIN 5 = MOTOR 2
- PIN 10 = MOTOR 3
- PIN 4 = MOTOR 4
- PIN 14 = MOTOR 5




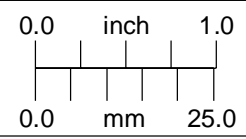
USED ON:	UNLESS OTHERWISE SPECIFIED DIMENSIONS ARE IN INCHES AND INCLUDE CHEMICALLY APPLIED OR PLATED FINISHES	P/N SUFFIX DEFINITION -1 CONVERSION COATING -2 PAINTING -3 MARKING -R REWORK	THE CONTENTS OF THIS DOCUMENT ARE PROPRIETARY TO NAVITAR, ITS USE IS AUTHORIZED ONLY FOR RESPONDING TO REQUEST FOR QUOTATION OR PERFORMANCE OF WORK FOR NAVITAR	 ROCHESTER, NEW YORK MOTORIZED (5PH) 12X & 3mm FF w/COAX ROSET & DUAL POSITION
MATERIAL:	TOLERANCES: DEC. .XXX ± .005 DEC. .XX ± .010 FRACT. ± 1/64 ANGLES ± 30' CONCENTRICITY .003 TIR BREAK ALL SHARP EDGES .005 MIN. .010 MAX MAX. SURF. ROUGHNESS 32 √	SCALE: 1:1 DR.: R. PODLENA CH.: P. BONAFEDE APP.: DATE DR.: 11/19/2002 DO NOT SCALE DRAWING	 0.0 inch 1.0 0.0 mm 25.0	
FINISH:	CHAMFER ALL THREADS 30° TO ROOT DIAM.			SIZE B 1-800-284-2288 sales@avsupply.com www.avsupply.com

For design help, accessories or pricing, please contact:
sales@avsupply or call: 1-858-565-1101

Distributed By: Audio Video Supply -- Tel: 1-800-284-2288 -- www.avsupply.com



OUTLINE

USED ON: MATERIAL:	UNLESS OTHERWISE SPECIFIED DIMENSIONS ARE IN INCHES AND INCLUDE CHEMICALLY APPLIED OR PLATED FINISHES	P/N SUFFIX DEFINITION -1 CONVERSION COATING -2 PAINTING -3 MARKING -R REWORK	THE CONTENTS OF THIS DOCUMENT ARE PROPRIETARY TO NAVITAR, ITS USE IS AUTHORIZED ONLY FOR RESPONDING TO REQUEST FOR QUOTATION OR PERFORMANCE OF WORK FOR NAVITAR	 ROCHESTER, NEW YORK	
				MOTORIZED (5PH) 12X & 3mm FF w/COAX PORT & DUAL 2 POSITION LS	
FINISH:	TOLERANCES:	SCALE: 1:1			SIZE
	DEC. .XXX ± .005	DR.: R. PODLENA			B
	DEC. .XX ± .010	CH.: P. BONAFEDE	1-51204 SHEET 2 OF 2		REV
	FRACT. ± 1/64	APP.:			A
	ANGLES ± 30'	DATE DR.: 11/19/2002			
	CONCENTRICITY .003 TIR	DO NOT SCALE DRAWING			
	BREAK ALL SHARP EDGES				
	.005 MIN. .010 MAX				
CHAMFER ALL THREADS 30° TO ROOT DIAM.	MAX. SURF. ROUGHNESS 32				

For design help, accessories or pricing, please contact:
 sales@avsupply or call: 1-858-565-1101

Distributed By: Audio Video Supply -- Tel: 1-800-284-2288 -- www.avsupply.com