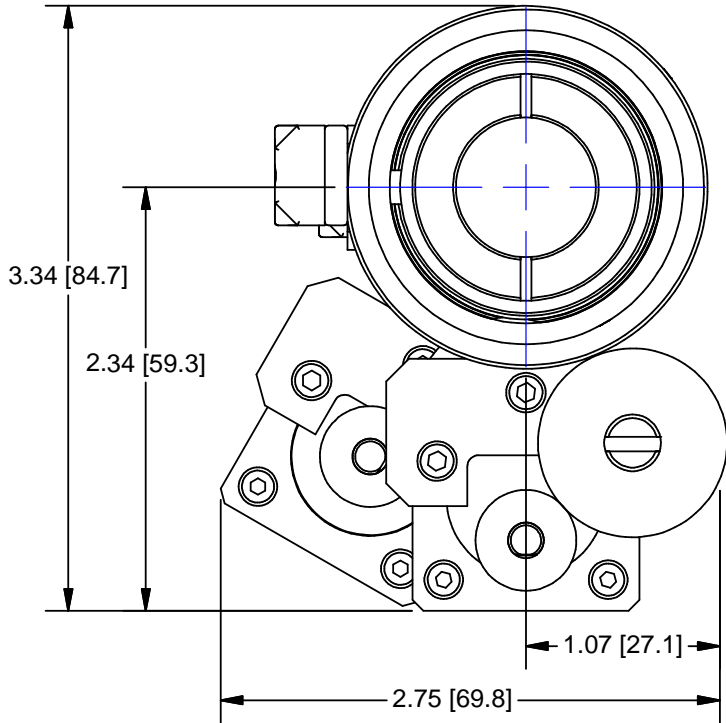
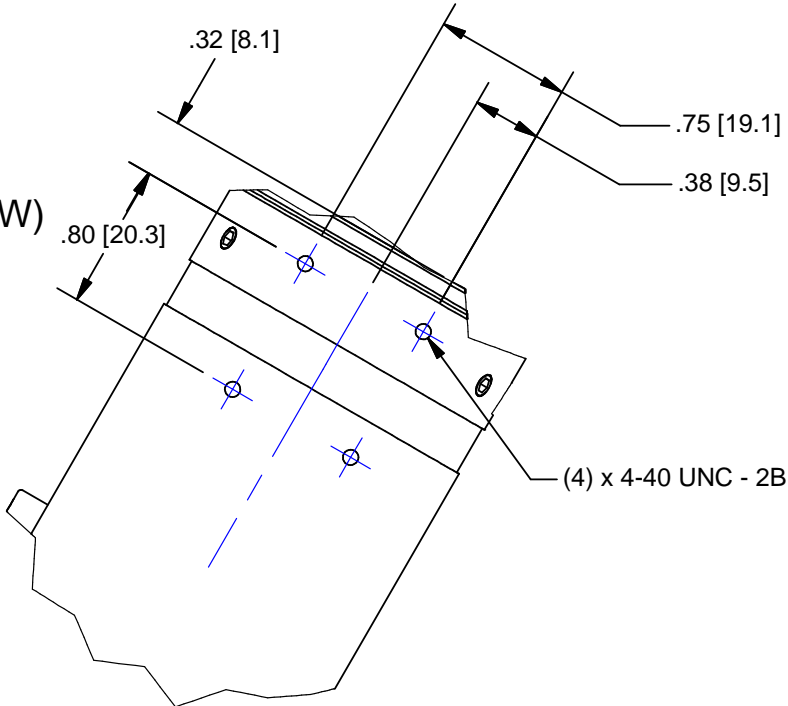


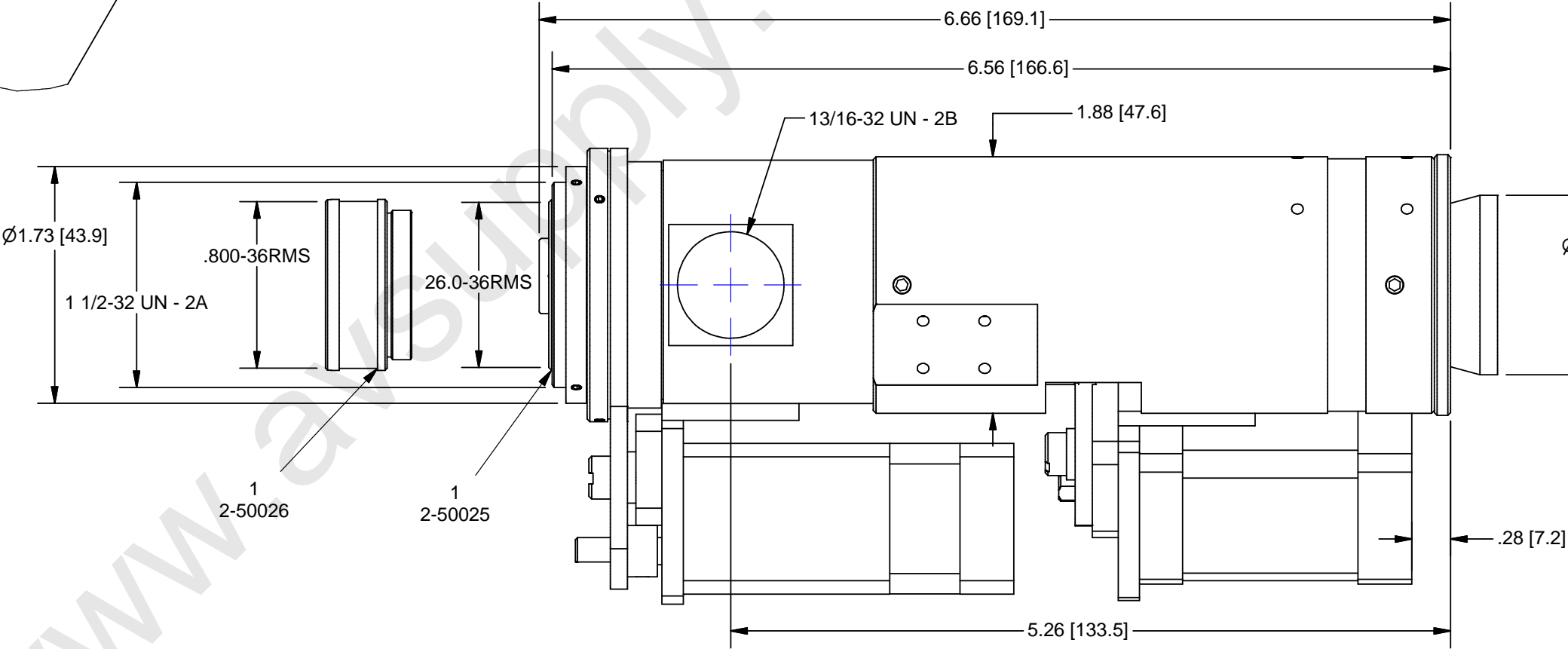
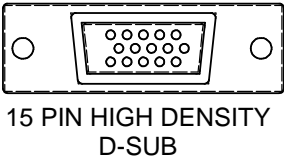
REV	CHANGE RECORD AND DATE	CH
A	RELEASE 10/20/03	

DETAIL A  
(PARTIAL VIEW)



5-PHASE MOTOR PINOUT

- PIN 3 = +5Vdc
- PIN13 = COMMON
- PIN 8 = FAR LIMIT
- PIN 12 = NEAR LIMIT
- PIN 15 = MOTOR 1
- PIN 5 = MOTOR 2
- PIN 10 = MOTOR 3
- PIN 4 = MOTOR 4
- PIN 14 = MOTOR 5



USED ON: MATERIAL:	UNLESS OTHERWISE SPECIFIED DIMENSIONS ARE IN INCHES AND INCLUDE CHEMICALLY APPLIED OR PLATED FINISHES	P/N SUFFIX DEFINITION -1 CONVERSION COATING -2 PAINTING -3 MARKING -R REWORK	THE CONTENTS OF THIS DOCUMENT ARE PROPRIETARY TO NAVITAR, ITS USE IS AUTHORIZED ONLY FOR RESPONDING TO REQUEST FOR QUOTATION OR PERFORMANCE OF WORK FOR NAVITAR	 ROCHESTER, NEW YORK MOTORIZED (5PH) 12X ULTRAZOOM
FINISH:	TOLERANCES: DEC. .XXX ± .005 DEC. .XX ± .010 FRACT. ± 1/64 ANGLES ± 30' CONCENTRICITY .003 TIR BREAK ALL SHARP EDGES .005 MIN. .010 MAX MAX. SURF. ROUGHNESS 32	SCALE: 1:1 DR.: R. PODLENA CH.: P. BONAFEDE APP.: DATE DR.: 11/19/2002 DO NOT SCALE DRAWING		 ROCHESTER, NEW YORK MOTORIZED (5PH) 12X ULTRAZOOM AUDIO VIDEO SUPPLY 1-800-284-2288 sales@avsupply.com www.avsupply.com
CHAMFER ALL THREADS 30° TO ROOT DIAM.				

For design help, accessories or pricing, please contact:  
sales@avsupply or call: 1-858-565-1101