



### Description

The Nitek WB5362 wireless bridges are communication radios that are deployed to connect two or more networks or sub-networks which are physically or logically separated. The bridges can be configured to bridge two network components together in a point-to-point or a point-to multipoint configuration using one device as a centralized communicator.

WB5362 Wireless network bridges provide a low cost means of connecting data communications and or video security networks. In large scale installation wireless bridges are installed to connect mesh networks across large campuses, commuter transportation, and throughout citywide deployed systems of networking, voice data and security.

The WB5326 outdoor high performance wireless bridges provide reliable network connectivity seamlessly offering speeds of 100Mbps throughput at 2.4GHz frequency and 100mW operating power output.

### Features

- High capacity point-to-point bridging .
- PoE (802.3af compliant).
- PoE Injector included .
- Compact design for easy installation .
- Fully IP/Ethernet compatible .
- AES128 Encryption .

### Ordering Information

Antenna Type	Part #	Compatible Radio	Frequency	Gain	WiFi Network Compatibility
High band Omni Directional	MA8-24	WB5362	2.4GHz 2400MHz to 2500MHz	8.0dBi	802.11a/b/g
High gain Omni Directional	MA12-24			12.0dBi	802.11a/b/g
High gain indoor/outdoor Sector	MA14-24			14.0dBi	802.11a/b/g
Accessories	AP540 = Antenna Cable & Surge Arrestor				

# WB5326 Wireless Bridge

## Wireless Backhaul Bridges

### TECHNICAL SPECIFICATION

#### Hardware

CPU Memory	8MB Flash + 32MB SDRAM
LAN Connectivity	1 x 10/100BaseT Auto MDIX RJ45
Enclosure	Metal & Plastic PC Case IP67 Verified
Connectivity Verification	4 LEDs, STATUS/POWER/WIRELESS/LAN
Ground	Yes
Ethernet Lightning Protector	Integrated with in PoE Injector
Default Button	Yes

#### Radio

Wireless	OFDM / CCK
Power Output	27dBm@11Mbps / 26dBm@54Mbps / 23dBm@HT20 & HT40
Sensitivity	-90dBm@11Mbps / -76dBm@54Mbps / -73Bm@HT40
Antenna	Internal 19dBi + N Connector (software configurable)
Frequency	2.4GHZ
Output	100mW

#### Security

WEP Encryption	64, 128, & 152bit
MAC Control	Yes
WPA/WPA2	Yes
Wireless Isolation	Yes
Hidden SSID	Yes
Firewall	Yes
VPN	VPN Pass-through (IPsec, L2TP, PPTP)

#### Operating Features

Channel Bandwidth	20MHz, 40MHz
Operating Mode	AP, Bridge, CPE
Bandwidth Control	Yes
Output Power Control	Yes (Full, Half, Qtr, Eighth, Min.)
Max. Client Setting	Yes
RF Scheduling	Yes (Control Radio "ON"/"OFF")
Spanning Tree	Yes (802.1d)
RTS Threshold Setting	Yes (0-2,346)
Fragmentation Setting	Yes (256-2, 346)
Beacon interval Setting	Yes(20-1,000)
DTIM Interval Setting	Yes (1-255)

#### Management

Web Based	Yes
Console	Yes
SNMP V.2	private MIB, 802.11 MIB
Support Time/Log Server	Yes

#### General

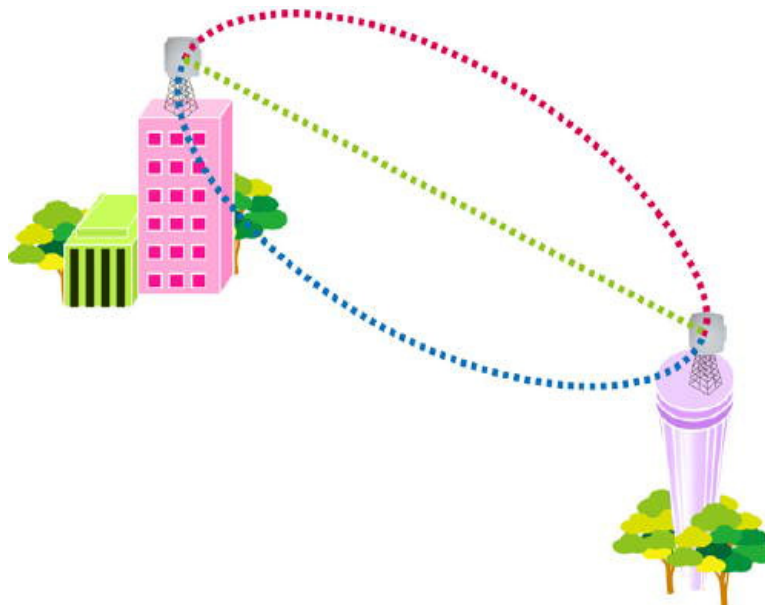
Operating temperature	-4° to 176° Fahrenheit
Operating humidity	10 to 95% non-condensing
Power requirements	802.3af PoE 48Vdc@0.5A/ 100~240 Vac, 50/60 HZ
Shipping Weight	6.8lbs

#### Mechanical

Height	13.25"
Width	13.25"
Depth	3.25"

In our continued effort to "Bridge the Gap in Technology", product specifications are subject to change without notice.

## System Design



# NITEK®



USA

5410 Newport Drive, # 24  
Rolling Meadows, IL 60008  
Phone: (847) 259-8900  
Fax: (847) 259-1300  
E-mail: [info@nitek.net](mailto:info@nitek.net)  
[WWW.NITEK.NET](http://WWW.NITEK.NET)