

BL7302 2MP Motorized P-iris Outdoor Bullet

CHAMP



- H.265, 50% lower bitrate
- 1080p60 + WDR Extreme
- IVS Pro
- Motorized lens + P-iris
- Adaptive IR 40m
- -50°C Low Temperature



The all new CHAMP BL7302 bullet camera has it all. Latest H.265 compression to cut bandwidth and storage requirements in half. Edge IVS (built-in analytics) to reduce server loading and false alarms. Class-leading WDR to handle the most challenging lighting conditions. Superior low-light sensitivity that still sees when you don't. Adaptive IR Pro that not only automatically adjusts the power of the IR illuminators, but also it's angle, to fit the view angle of the motorized lens, which can be easily focused by the Smart Focus function, remotely of course. Built-in fan and heater allow the camera to operate in the most extreme environments (-50°C to 60°C).

The BL7302 can be used in all kinds of applications, ranging from traffic, airports to public area surveillance and extreme applications. With the most professional NVR software for free bundled can support up to 32 CH IP cameras, you can easily setup a surveillance system and 24-7 monitor from mobile devices, PC or laptop without any extra cost.



Distributed By: Audio Video Supply -- Tel: 1-800-284-2288 -- www.avsupply.com

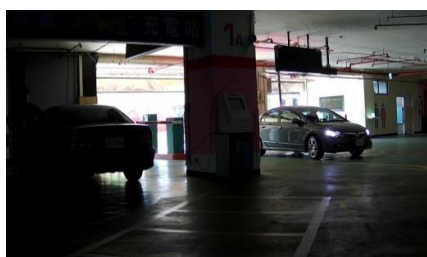
For design help, accessories or pricing, please contact:
sales@avsupply or call: 1-858-565-1101



Features

- 60 fps @ 1080p
- H.265 saving 50% bandwidth
- Motorized 2.8-12 mm, F1.6, P-iris, Smart focus
- Adaptive IR 40m
- WDR extreme
- Starlight
- IVS Pro (intelligent video surveillance)
- Smart feature: Adaptive IR, Corridor Mode, ROI
- Defog
- RS-485 supports pan/ tilt motors
- Two-way audio, line in and line out
- 2 x alarm input, 2 x alarm output
- Edge storage
- -40°C low temperature
- IK10 vandal-proof
- IP66 weatherproof
- Screwless 3-axis angle adjustment for easy installation on wall or ceiling
- SSL v3 advanced HTTPS encryption
- Supports Samba network storage
- Multi-lingual user interface
- ONVIF 2.4 and Profile S compliant
- Free 32-channel NVR software

WDR Extreme

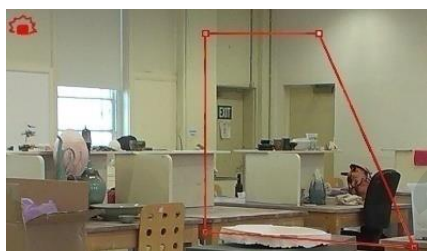


WDR off



WDR on

IVS Pro



Perimeter Detection

IP Surveillance Solutions

• Free 32ch NVR Software

The most professional NVR software you can get for free!

- Support up to 32 channels
- Up to 32 channels remote live view
- Remote playback 4 channels
- Multi-site / multi-server
- Transcoding (record high quality, transcode to different resolution/ frame rate for remote client to save bandwidth)
- iOS/ Android mobile client (multi-channel live view | playback | PTZ & I/O control)
- E-maps (up to 4 layers | unlimited number of maps | video preview)
- Dual monitor
- ePTZ
- Multi-lingual user interface

*32ch free license for CHAMP cameras, but need to activate license for other brand



• ONVIF

All IP cameras are ONVIF 2.x & Profile S compliant, and continuously upgraded to comply with the latest versions



Applications



1. City Surveillance
2. Industrial

Technical Specifications

Camera

Model	BL7302 2MP Motorized P-iris Outdoor Bullet
Image sensor	1/3" megapixel CMOS sensor
Lens	F1.6, 2.8 - 12 mm motorized, P-iris lens
Angle of view	33° - 104° horizontal
Min illumination	0.05 lux @ F1.6 (color) 0.001 lux (B/W) 0 lux (IR LED on)
IR working distance	40m effective range Adaptive IR, adjustable brightness via FW
IR LEDs	6pcs (850nm)
Day/Night function	Mechanical IR cut filter
Dynamic range	120dB

Video

Video compression	Motion JPEG H.264 baseline/ main profile/ high profile H.265
Resolutions	Motion JPEG/ H.264/ H.265: 2 profiles from 1920 x 1080 to 320 x 240 2 profiles from 640 x 480 to 320 x 240
Frame rate	Motion JPEG: up to 30 fps at 1920 x 1080 H.264/ H.265: up to 60 fps at 1920 x 1080
Video streaming	Simultaneous Motion JPEG, H.264, H.265 Controllable frame rate and bandwidth Support unicast (Real Time Streaming Protocol)
Image settings	Rotation: mirror, flip, mirror flip Brightness, contrast, saturation, sharpness Overlay capabilities: time, date, text and privacy mask ROI, corridor mode WDR Glass demiser Defog

Audio

Audio streaming	Two-way (full duplex) Line in/ line out
Audio compression	G.711 μ law, a law/ G.726/ AMR

Network

Security	Multiple user access levels with password protection, HTTPS encryption Bonjour, TCP/ IP, DHCP, DNS, DynDNS, PPPoE, ARP, ICMP, FTP, SMTP, NTP, UPnP, RTSP, RTP, RTCP, HTTP, HTTPS, SSL, TCP, UDP
Users	10 simultaneous users

Alarm and Event Support

Alarm and event management	Input: alarm buffer, alarm input, motion detection, tampering detection, perimeter detection, periodical, network link down Output: network storage, FTP, SMTP, HTTP event, alarm out Pre-and post alarm buffer
IVS	Tampering detection, perimeter detection People counting (optional) People density (optional)

System

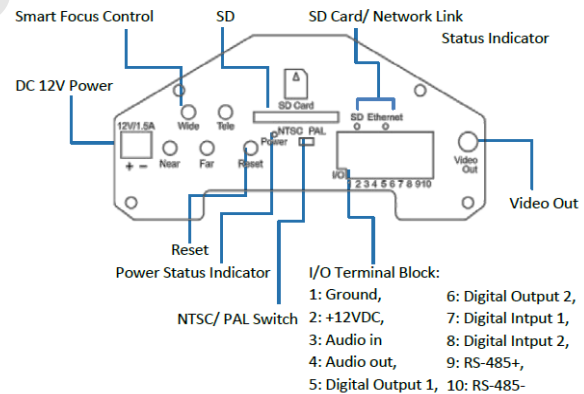
RJ-45 for Ethernet 10/100/1000 Base-T (with PoE)
2 pin terminal blocks for DC power
Smart Focus control buttons
Terminal blocks for alarm input/ alarm output
Line in/ line out
Reset push button
NTSC/ PAL switch
RCA connector for analog video output

Local storage	SD/ SDHC/ SDXC card slot Power status indicator Network link indicator SD card status indicator
Software integration	ONVIF 2.4 & Profile S
General	
Casing	Aluminum casing
Housing	IP66 rated weatherproof housing
Power	12V DC, 1.5A Power consumption: Max 13W PoE (Power over Ethernet) built-in IEEE 802.3af/ at(Class 0)
Operating conditions	-50 ~ 60 °C (-58 ~ 140 °F)
Installation, management, and maintenance	CHAMP camera management tool on CD and web-based configuration. Configuration of backup and restore firmware upgrades over HTTP, firmware available at www.champsolution.com
Minimum web browsing requirement	Intel Core i5 CPU @ 2.0GHz (or equivalent AMD) 512MB RAM graphic cards (or equivalent on-board graphic cards) 2GB RAM Windows 7 or later Mac OS Leopard 10.5 or later
Dimensions (HxWxD)	383 x 152 x 243mm (incl. bracket) (15.1" x 6.0" x 9.6")
Weight	2170g (4.78lb) excl. power supply
Included accessories	Quick installation guide, CD (Camera Installation Tool, Video Management Tool, User Manuals, Camera Language Packs) mounting and connector kits
Certification	CE, FCC, RoHS

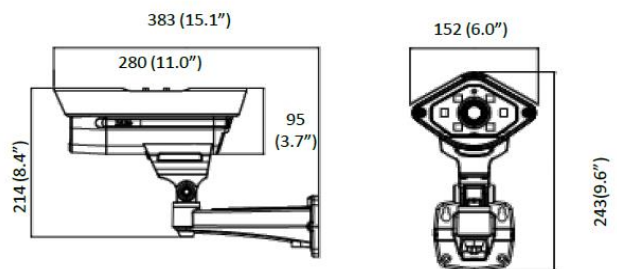
Integration

software For viewing, recording and archiving up to 32 ch cameras

Part Names and Functions



Dimensions



B1, No.207-1, Sec. 3, Beixin Rd., Xindian Dist., New Taipei City 231, Taiwan | www.champsolution.com

Tel : +886-2-7739-2260 | Fax : +886-2-7703-3377 | Mail : inquiry@champsolution.com

© 2015 All rights reserved.
THIS DOCUMENT IS PROVIDED FOR INFORMATIONAL PURPOSES ONLY AND IS NOT INTENDED AS ADVERTISING. ALL WARRANTIES RELATING TO THE INFORMATION IN THIS DOCUMENT, EITHER EXPRESS OR IMPLIED, ARE DISCLAIMED TO THE MAXIMUM EXTENT ALLOWED BY LAW. THE INFORMATION IN THIS DOCUMENT IS SUBJECT TO CHANGE WITHOUT NOTICE. ALL MENTIONED BRAND NAMES ARE REGISTERED TRADEMARKS AND PROPERTY OF THEIR OWNERS.

For design help, accessories or pricing, please contact:
sales@avsupply.com or call: 1-858-565-1101