

8CH HD IP STANDALONE NVR

HD IP NVR



POE
Power Over Ethernet

IPNVRP801

OVERVIEW

ORION Images 8ch HD IP NVR that enables the recording of full 30fps per channel, accepts ONVIF Compliance IP cameras and features PoE and Automatic IP Setting. This NVR can be added up to 16 units in the network and viewed and controlled thru an EMS software. Also available 4ch HD NVR (IPNVRP401) and 16ch Hybrid NVR (8ch Analog + 8ch IP).

FEATURES

- » Plug & See FULL HD Image
- » Auto IP Scan & Channel Allocation
- » 8ch PoE Model
- » 1080p @ 30 fps Recording
- » Our IP Camera Function Set Up in NVR (WDR, TDN, DVR, Auto Zoom and more)
- » Standard 1TB Internal SATA HDD Included
- » H.264 Codec Video and Audio Compression
- » IR Remote Controller
- » Client View, Windows (Active-X), Mac PC, 3G Mobile Phone Client Software



IPNVRP801

8CH HD IP STAND ALONE NVR

SPECIFICATIONS

IPNVRP801	
System	
Input Format	H.264 (OnVif)
Camera Input	RJ45 x 8 (PoE)
Monitor Output	HDMI / VGA (D-Sub15)
Audio In	1 x Line In (RCA Jack)
Audio Out	1 x Line Out (RCA Jack)
Sensor In / Out	4 Inputs
External Port	RS485
USB Port	2 Ports (Front / Rear)
IR Remote Controller	Provided
Recording	
Video / Audio	H.264 Codec
H.264 Max. Record Playback	D1 480fps, 720p / 240fps, 1080p / 120fps
Record Mode	Continuous / Schedule / Motion / Alarm
Quality	Ultra, Super, High, Middle, Low (5 Steps)
Pre / Post Recording	Up to 5 sec / Up to 300 sec
Motion Detection	Support from IP Camera
Storage	
HDD Support	2 Internal SATA HDDs Bay (Up to 4TB) available
Standard HDD Built-In	1TB
External Storage	e-SATA / USB
Network	
Ethernet	2 x 10 / 100M
Camera CH Expansion	Yes (through HUB)
Viewer Software	EMS (up to 64ch)
Mobile Application	iPhone & Android
Remote Notification	Yes
Power	
DC Inlet	DC12V / 5A, DC48V (PoE)
Dimension & Weight	
Dimension (Inch)	14.96 x 2.76 x 13.39
Weight	6 lbs

*Design and specifications are subject to change without notice

MORE PRODUCT VIEW



Front View

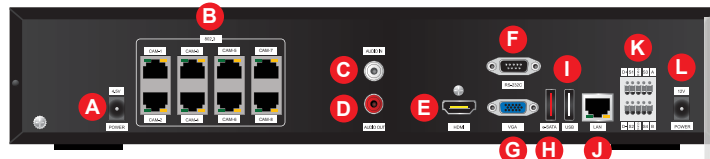


Rear View



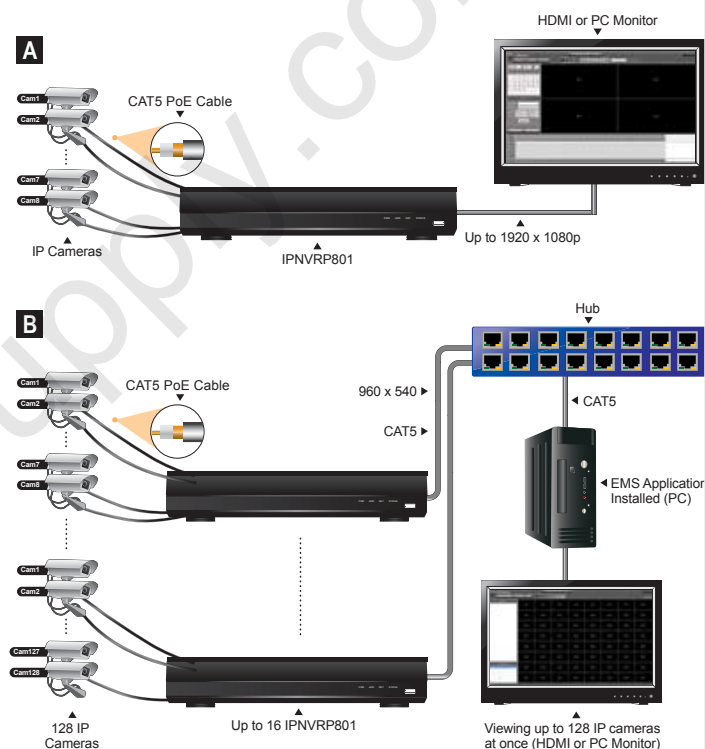
Side View

INPUT INTERFACE



- A DC 48V Power for PoE
- B IP Camera Input
- C Audio Input
- D Audio Output
- E HDMI Output
- F RS-232C
- G VGA Output
- H e-SATA Port
- I USB Port
- J LAN Port
- K Sensor in / Output
- L DC 12V Power

CONNECTIONS



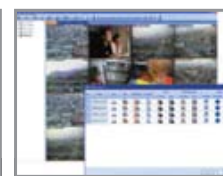
EMS (Enterprise Management Suite)



Multi Ip, Multi Device



Enhances E-Map



Multi Window

EMS can add up to 300 DVR's and other devices like cameras, AV server, GPIO. It enables monitoring, controlling, searching on maximum 16 channels per each site. EMS provides various multi screen displays, maximum 64 channels per 1 monitor at same time.

EMS has a tree structure of E-map function. Users can easily locate the place of each site where devices are installed and move to another location by selecting link.

EMS has multi window capability for monitoring DVR's in multiple locations. EMS provides maximum of 8 monitors so that continuously monitoring several live screens such as E-map, Health Report, etc.