



VZ-DC24-320 ADVANTAGES

- AC Input - 88 ~ 264V AC (124 ~ 370V DC), 47 ~ 63Hz
- DC Output - 24V DC / 320 W
- Built-in active PFC function, Power Factor > 0.95
- A low profile enclosed power supply with PFC function
- Over voltage / overload / over current / short circuit protection
- 30mm low profile design for 1U installation
- Conformal coating and Green LED per output
- UL/US listed

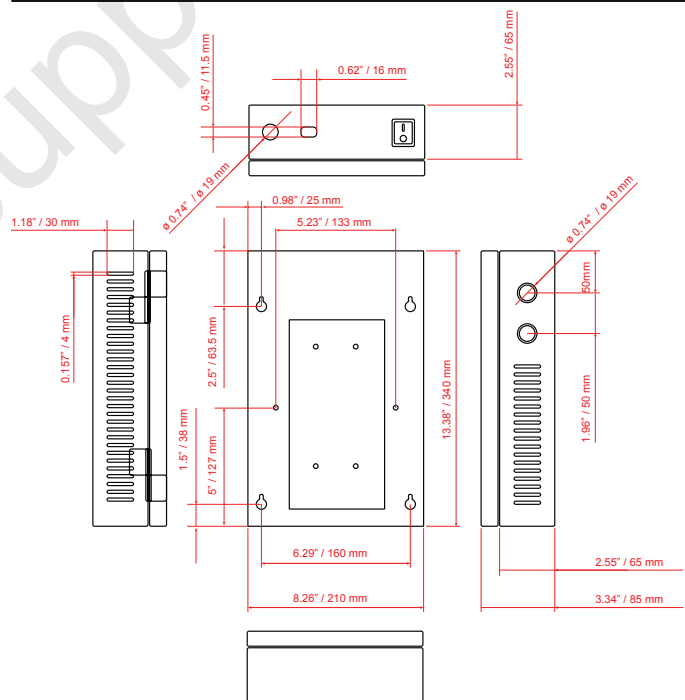


Designed specifically for ViewZ monitor models:

- VZ-PVM-Z2B3, Z2W3
- VZ-PVM-I2B3, I2W3
- VZ-PVM-Z3B3, Z3W3
- VZ-PVM-I3B3, I3W3
- VZ-PVM-Z4B3, Z4W3
- VZ-PVM-I4B3, I4W3

MODEL #	VZ-DC24-320
FEATURES	
Input Voltage	88 ~ 264V AC / 124 ~ 370V DC, 47 ~ 63 Hz
Output Voltage	DC 24V / 321.6 W
Output Voltage Adjustment Range	20 ~ 26.4V
Total Output Current / Range	13.4 A / 0 ~ 13.4A
PROTECTION	
Overload	105 ~ 135% rated output power
Type	Hiccup mode, recovers automatically after fault condition is removed
Over voltage	27.6 ~ 32.4V
Type	Shut down o/p voltage, re-power on to recover
Over temperature	Shut down o/p voltage, recovers automatically after temperature goes down
DIMENSIONS & WEIGHT	
Dimensions (Width x Height x Length) inch	8.26 x 13.38 x 3.34
(Width x Height x Length) mm	210 x 340 x 85
Net Weight	TBD
GENERAL	
Regulations	SAFETY STANDARDS: UL/CUL
Operating Humidity	20 ~ 90% RH. Non-condensing
Storage Humidity	10 ~ 95% RH. Non-condensing
Operating Temperature	-22°F ~ 158°F / -30°C ~ +70°C
Storage Temperature	-40°F ~ 185°F / -40°C ~ +85°C
Temperature Coefficient	±0.03%/°C (0°C ~ 50°C)
Vibration	10 ~ 500Hz, 2G 10min./1cycle, 60min. each along X, Y, Z axes
MTBF.	206.5K hrs min. MIL-HDBK-217F (25°C)

DIMENSIONS

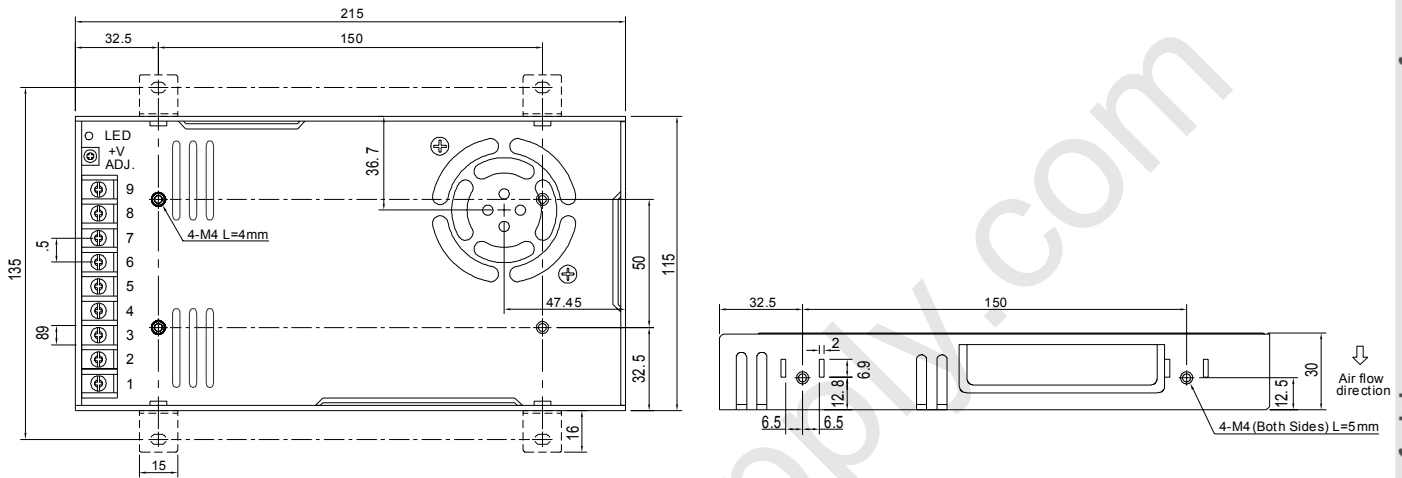


Contact ViewZ








- Address : 177 W. Orangethorpe Ave., Placentia, CA 92870
- Phone : (714) 996-1177, Fax : (714) 996-1138
- Sales : sales@viewzusa.com
- Specification subject to change without notice

Distributed By: Audio Video Supply -- Tel: 1-800-284-2288 -- www.avsupply.com

MECHANICAL SPECIFICATION



PRECAUTIONS

-  Installation and service should be performed only by qualified service personal and should conform to all local codes.
-  To reduce the risk of electric shock or fire, do not expose this equipment to rain or moisture.
-  Replace fuses only with the same type and rating as indicated in the specifications section of this manual.
-  Always connect Earth Ground first and remove last
-  This equipment shall be installed in a manner which prevents unintentional operation by employees, cleaning personal, or others working in the premises, by falling objects, customers, building vibration, or similar causes.
-  To prevent impaired operation, ensure that all wiring is routed and secured to prevent accidental open or short circuit conditions.
-  This equipment is not intended for use within the patient care areas of a Health Care Facility.

Contact ViewZ

- Address : 177 W. Orangethorpe Ave., Placentia, CA 92870
- Phone : (714) 996-1177, Fax : (714) 996-1138
- Sales : sales@viewzusa.com
- Specification subject to change without notice.