

Taurus® / Taurus-R® Pan & Tilt Mobile Positioner Series

Designed and built to endure the harshest mobile or stationary environments, the Taurus design enables simple integration into existing QPT systems and allows for various platform mounting applications.

The Taurus-R supports radar or other payloads that can be independently positioned from the Pan & Tilt.

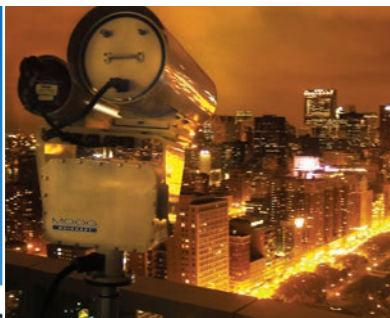
Available Features

- RF Pass-thru turret
- Balanced payloads; up to 300 lbs static and 150 lbs mobile installations
- Fixed or Mobile Installations
- Mil-Spec Connectors
- Marine configuration that meets IP-67 standards
- Universal wiring for sensor integration
- Thermostatically controlled heaters

Sensor Integration

- Radar Antenna Systems
- Multi-Spectrum Cameras (Visible / IR)
- IR and Visible Illuminators
- Laser Range Finders
- Communication Antennas
- Acoustic Devices

QUICKSET



Standard Performance	
Load Capacity:	Static installation - up to 300 lbs (136 kg) balanced • Mobile installation - up to 150 lbs (68 kg) balanced
Operating Voltage Range:	24VDC (±4VDC)
Total Power:	Pan & Tilt Axes: 2.6A pk, 2.0A continuous at 24VDC • Heater: 4.4A at 24VDC • Standby: 0.5A at 24VDC (no heater current)
Pan-Axis Range:	360° continuous rotation (slip ring)
Pan-Axis Speed:	0.005° - 30°/sec (dependent on payload)
Tilt-Axis Range:	180° (±90°)
Tilt-Axis Speed:	0.005° – up to 30°/sec on balanced payload
Internal Heater:	Thermostatically controlled 0°C (32°F) ON • 1.7°C (35°F) OFF
Operating Temperature:	-15°C to 55°C (5°F to 131°F) (without heater) • -30°C to 55°C (22°F to 131°F) (with heater)
Rotational Limits:	Fixed tilt hard limit, adjustable soft limits on both axes
Feedback:	Optical Encoders (0.01° readout)
Repeatability:	0.05°
Duty Cycle:	Up to 90%
Motor Type / Drive:	Stepper
Communication to Pan & Tilt:	RS232 / 422 / 485, IP Ethernet: 10/100 Base-T
Communication to Sensors:	RS232 / 422, Ethernet Pass-Through
Control Protocol:	QuickSet or Pelco D
Connector Specifications:	Mil-Spec grade used on all configurations
Load Connector Interfaces:	2 Mil-Spec connectors on each tilt axis platform
Materials:	Housing 6061-T6 Aluminum, stainless steel hardware, permanently sealed radial ball bearings
Finish / Color:	White powder coat paint over alodined chromate for corrosion resistance standard. Other colors and CARC available upon request
Weight:	94 lbs (43 kg)
Dimensions:	See page 3
Test Cable and Software:	6 ft test cable and software include

www.avsupply.com

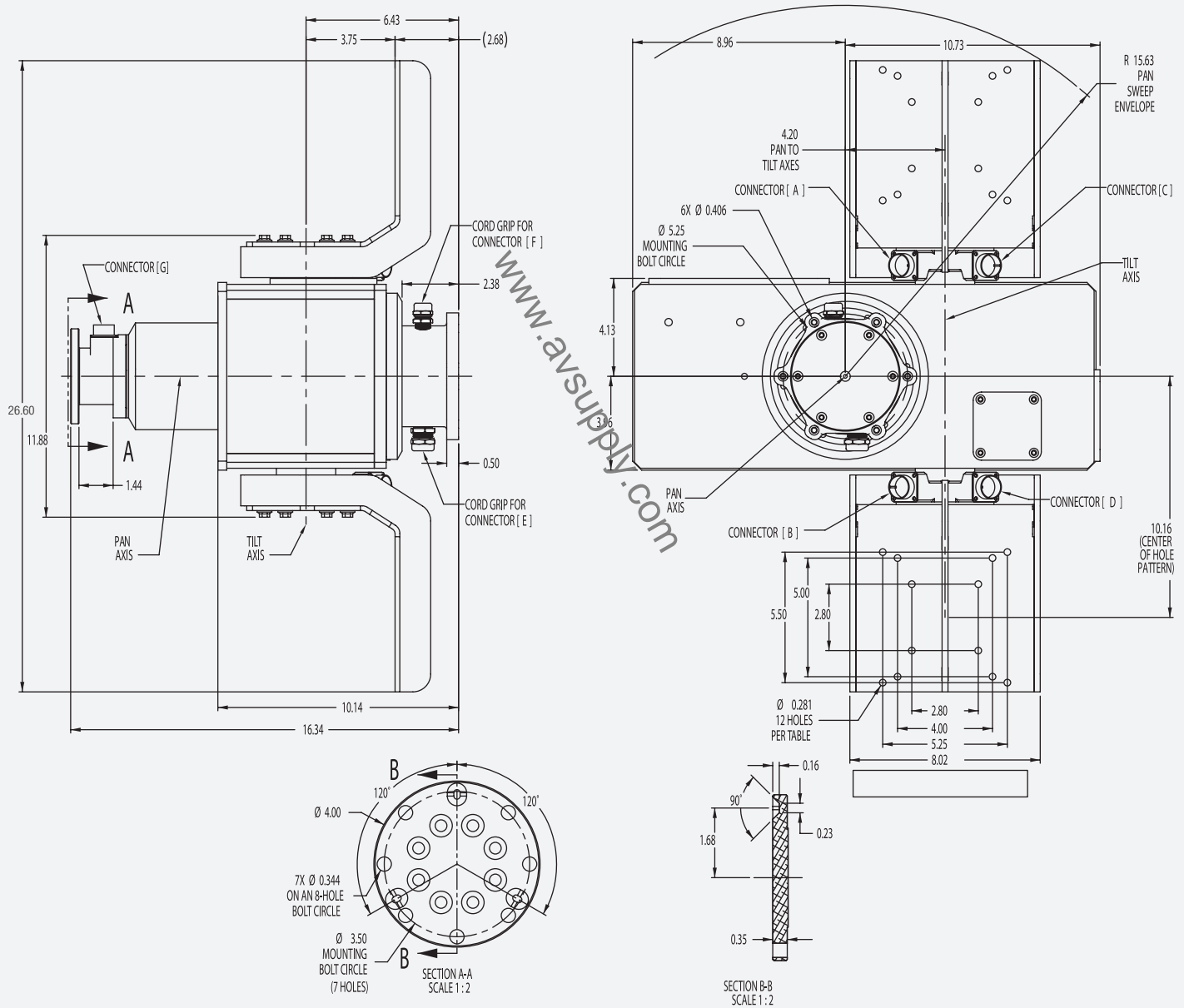
Environmental Testing Performance

Vibration: Vertical, Longitudinal and Lateral Passed

Mechanical Shock: Passed

Note: Environmental testing procedures in accordance with MIL-STD-810F; HMMWV Shock and Vibration parameters

Architectural and Dimensional Drawings



Dimensions are in Inches



Taurus



Taurus-R

MOOG

Sensor and Surveillance Systems

3650 Woodhead Drive Northbrook, IL. USA 60062-1895