

# Tokina

## 22X MOTORIZED ZOOM LENS

**TM22Z1328N** f = 13-280mm F/2.8 3-MOTORS

**TM22Z1328NPN** f = 13-280mm F/2.8 3-MOTORS with Preset(Zoom/Focus)

### SPECIFICATIONS

MODEL No.	TM22Z1328N / TM22Z1328NPN		
IMAGE FORMAT	1/2 inch		
MOUNT	C-Mount		
FOCAL LENGTH	13 - 280mm		
APERTURE	F1 : 2.8		
APERTURE RANGE	F2.8 - Close		
ANGLE OF VIEW ( ) = 1/3"	DIAGONAL	W33.03° - T1.68° (W25.14° - T1.27°)	
	HORIZONTAL	W26.76° - T1.37° (W20.23° - T1.02°)	
	VERTICAL	W20.23° - T1.02° (W15.24° - T0.77°)	
M. O. D.	1.8m		
BACK FOCAL LENGTH	11.0mm		
FILTER SIZE	M67mm P=0.75		
DIMENSIONS	W80.0 X H101.0 X L168.7mm		
WEIGHT	800g		
OPERATING TEMPERATURE	-10°C ~ 60°C		

IRIS/ZOOM/FOCUS Controls	IRIS	ZOOM	FOCUS
INPUT VOLTAGE	DC+6 ~ +12V	DC+6 ~ +12V	DC+6 ~ +12V
CURRENT CONSUMPTION	Max. 30mA	Max. 60mA	Max. 60mA
MOTORIZATION SPEED	Approx. 4.5 sec.	Approx. 4 sec.	Approx. 4 sec.

### CABLE CONNECTIONS

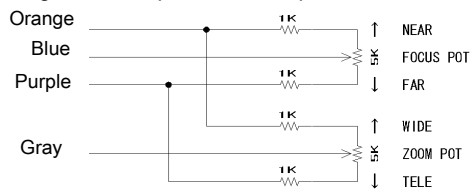
#### IRIS/ZOOM/FOCUS

CONTROL	CABLE COLOR	POLARITY	DIRECTION
IRIS	YELLOW	+ (-)	Open (Close)
	BROWN	- (+)	
ZOOM	GREEN	+ (-)	Wide (Tele)
	WHITE	- (+)	
FOCUS	BLACK	+ (-)	Inf. (Near)
	RED	- (+)	

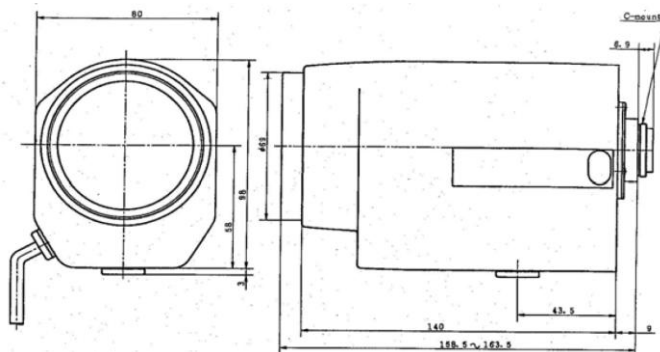
#### POTENTIOMETER-PRESET (TM22Z1328NPN Only)

CABLE COLOR	CONNECTION
ORANGE	Pot. Supply
BLUE	Focus Pot. Wiper
PURPLE	Pot. Return
GRAY	Zoom Pot. Wiper

Wiring details for potentiometer-preset



### APPERANCE



\*Design and specifications are subject to change without notice.

Distributed By: Audio Video Supply -- Tel: 1-800-284-2288 -- www.avsupply.com

For design help, accessories or pricing, please contact:  
sales@avsupply or call: 1-858-565-1101

