

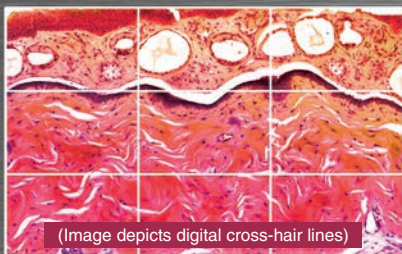
JCS-HR5U

FULL HD, ULTRA-COMPACT
DUAL-OUTPUT VIDEO CAMERA

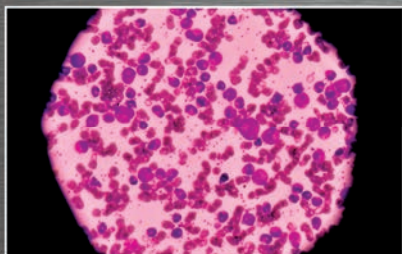
HDMI® & USB 3.0



(Lens not included)



(Image depicts digital cross-hair lines)



Features

- HDMI 1080p / 1080i output at 59.94Hz
- USB 3.0 1080p output at 59.94 fps maximum
- Simultaneous live view and USB output
- F10 sensitivity rivals three-chip camera performance
- 1/2.8" progressive-scan color CMOS sensor
- 12-color channel matrix adjustment
- Gamma correction
- Ultra-compact (approx 1.75" x 1.75" x 3") one-piece system
- 5 User-programmable settings files
- Integrates with PC for image capture and streaming (not provided)
- C-mount lens mount
- Digital crosshair lines

Applications

- Microscopy
- Bio imaging
- Scientific imaging
- Live tissue imaging

Real-Time 60 fps Full HD USB 3.0 Video Camera

The new JCS-HR5U camera represents an important advancement in clinical microscopy imaging applications. The ultra-compact, full HD video camera features both HDMI and SuperSpeed USB image outputs for *simultaneous*, real-time live viewing from a monitor plus high-res image capture to a computer. It is optimal for color documentation systems integration in the fields of bio imaging, scientific imaging, and live tissue imaging.

TOSHIBA

Leading Innovation >>>

AUDIO VIDEO SUPPLY

JCS-HR5U FULL HD, ULTRA-COMPACT DUAL-OUTPUT VIDEO CAMERA HDMI & USB 3.0

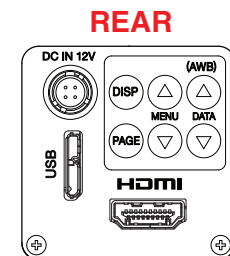
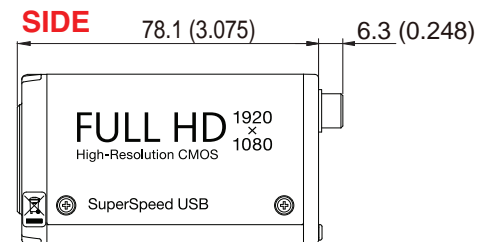
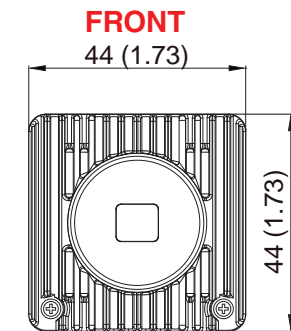
PERFORMANCE SPECIFICATIONS

Image sensor	1/2.8 inch color CMOS sensor (progressive scan, rolling shutter)
Lens mount	C mount
Image output	HDMI 1.4a 4:4:4 : 1920 x 1080 / 59.94Hz USB 3.0 (UVC1.1 compliant YUV4:2:2 : USB 3.1 Gen 1) 1920 x 1080 / 59.94fps (USB 3.0 mode theoretical maximum) 1920 x 1080 / 10fps (USB 2.0 mode theoretical maximum)
Sensitivity	F10 standard (2000lx, 3100K, gain OFF, gamma OFF, 59.94Hz); F11 standard (2000lx, 3100K, gain OFF, gamma OFF, 50Hz)
Minimum illumination	4lx standard (F1.4, 3100K, gain +20dB, gamma OFF, 59.94Hz) 3.3lx standard (F1.4, 3100K, gain +20dB, gamma OFF, 50Hz)
Power requirements	DC12V± 10%, power consumption approx. 4.5W
Environmental	0°C ~ + 40°C (32°F ~ +104°F) operating -20°C ~ + 60°C (-4°F ~ +140°F) non-operating Humidity 90% or less non-condensing
Gain	AUTO / MANUAL : 0 ~ 20dB / OFF
White balance	AWB (Automatic White Balance) / MANUAL
Shutter	AUTO / MANUAL (OFF ~ 1/10000s)
Image optimization function	MATRIX color correction (12 colors), gamma correction, detail gain, master pedestal chroma gain setting, knee correction
Special function	Flip / mirror, digital crosshair lines

This Class A digital apparatus complies with Canadian ICES-003.

DIMENSIONS

Measurements in Millimeters (Inches)



Output & connector format; HDMI 1.4a Type A terminal
USB Video Class, UVC 1.1 Micro-B connector, USB 3.1, Gen 1

Weight approx. 170 g
(0.375 lbs)

CONNECTIONS

