

# EXPT

## EXPLOSION-PROOF INTEGRATED PAN&TILTS WITH CAMERA HOUSING

### MAIN FEATURES

- Solid anticorodal aluminium construction
- Epoxy polyester powder painting, RAL7032
- Horizontal range 360° with speed 6°/s, vertical range -90° / +90° with speed 2.4°/s
- Housing built with the same characteristics as the EXHC
- Version with device for the protection of the glass, EXPTD (Integrated housing with the same specifications as the EXHD)
- IP66
- Version available with reinforced housing heater 24Vac, P&T heater 24Vac and RAL7001 special painting for temperature applications down to -40°C (-40°F) (mod. EXPTC033R, EXPTD035R)
- A single pre-wired multi-core cable, 7,5m long, is included with the unit and comes out from the base of the P&T through a cable gland
- Supplied with housing heater and preset. Sunshield and autopan available as options

### DESCRIPTION

The EXPT system includes a housing with the same characteristics of the EXH and a Pan & Tilt, designed for movement both in horizontal and vertical planes. The peculiar characteristic of the EXPT device is the absence of external wiring in rotation, either for the control of the Pan & Tilt or for the camera and lens. This solution makes the installation and the maintenance of the Pan & Tilt easy. The EXPT includes one multiconductor cable that comes out from the base of the Pan & Tilt through a cable-gland. The EXPT is supplied with preset and housing heater. The EXPT can be equipped with sunshield, autopan, reinforced housing heater and motors heater, and patented glass protection device (model EXPTD).

The glass protection device consists of a connection flange with the housing, a closing flange and an explosion-proof central body containing a rugged and transparent glass, a motor powered in 24Vac, two windings and a transparent Mylar film, installed just in front of the glass. The motor drives, through four pinions with gear rim, the winding for recovering the dirty Mylar film, while at the same time the other winding installed on the opposite side releases the clean film. The Pan & Tilt units EXPT are made with strong Anticorodal aluminium die-cast alloy of AISi 7Mg EN - AB 42000 group.



EXPTC + EXPTS



EXPTD + EXPTS



EXPTD035R

### AVAILABLE MODELS

Model Number	Housing heater 24Vac	Pre-wired multipolar cable	Preset	Autopan	Glass protection device	Reinforced heater and P&T heater 24Vac	Max consumption
EXPTC000	✓	✓	✓	-	-	-	145W
EXPTC010	✓	✓	✓	✓	-	-	145W
EXPTC033R	-	✓	✓	✓	-	✓	145W
EXPTD011	✓	✓	✓	✓	✓	-	145W
EXPTD035R	-	✓	✓	✓	✓	✓	145W



**TECHNICAL DATA****GENERAL**

Non-corrosive die-cast aluminium (anticorrosive)

Bicomponent polyurethane enamel with orange peel effect, RAL7032

Special painting for low temperature, blue colour RAL7001 (EXPTC033R, EXPTD035R, EXPTWB00R). Resistant to stress cracking, adverse weather conditions, detergents, salt-spray and typical airborne pollutants

**MECHANICAL**

Horizontal plane movement: 0-360°

Horizontal speed (fixed): 6°/s

Pan Torque: 2.5kgm

Vertical plane movement: ±90°

Tilt speed (fixed): 2.4°/s

Vertical torque: 6kgm

Horizontal limit switch adjustable only for the Autopan function

1 cable gland Ex d 3/4" NPT IP66 ATEX for armoured cables in the base of the P&T according to the housing marking

One multiconductors armoured cable normally supplied 7.5m (24ft) length, diameter 20.8mm (0.8in): 25 poles 0.5mm, 4 poles 1mm, 2 RG175, 75 Ohm

External dimensions:

- EXPTC 427.5x571.4x560mm (16.8x322.5x22in)
- EXPTD 573.5x581x580mm (22.6x22.9x22.8in)

Internal dimensions:

- EXPTC Ø 180x380mm (7x14.9in)
- EXPTD Ø 180x460mm (7x18.1in)

Internal usable area:

- EXPTC 100x100x280mm (3.9x3.9x11in)
- EXPTD 100x100x280mm (3.9x3.9x11in)

Unit weight:

- EXPTC 56.5kg / 124.5lb
- EXPTD 62kg / 136.9lb

Glass window:

- EXPTC Ø 114mm (4.5in)
- EXPTD 70x56mm (2.7x2.2in)

Glass protection device:

- Ø 250x140mm (9.8x5.5in)
- Mylar film 80mm (3.1in) wide and 18m (59ft) length, 350 shifting steps, marks printed on the last 50cm (19in)

**ELECTRICAL**

Power supply: IN 24Vac, 50/60Hz

Horizontal and vertical motor consumption: 50W max

Standard vertical and horizontal preset potentiometers

Heating: Ton 10°C±4°C (50°F±7°F), Toff 25°C±3°C (77°F±5°F)

- IN 24Vac, Power consumption 20W max

Reinforced heater: Ton 10°C±4°C (50°F±7°F), Toff 25°C±3°C (77°F±5°F)

- 3 resistors in the housing
- 2 resistors in the P&T (one for each motor)
- Consumption: 100W max

Glass protection device:

- 24Vac/dc, Power consumption 2W max

Devices to install inside the housing

- Camera equipped with lens with max total power of 20W
- Power supply max 24Vac (only for analog camera)
- Usable volume for camera/lens: 2800cm<sup>3</sup>
- Minimum distance between the walls of the housing and the camera/lens: 12mm

**ENVIRONMENT**

Indoor/Outdoor

Operating temperature with heating: -20°C / +50°C (-4°F / +122°F)

Operating temperature with reinforced heater: -40°C / +50°C (-40°F / +122°F)

*Always refer to the temperature in the marking.*

**CERTIFICATIONS**

ATEX (EN 60079-0: 2009, EN 60079-1: 2007, EN 60079-31: 2009)

- II 2G Ex d IIC T6 Gb
- II 2D Ex t IIIC T85 °C Db IP66

CE 0044: notify number from competent body

IECEx (IEC 60079-0: 2007, IEC 60079-1: 2007, IEC 60079-31: 2008)

- Ex d IIC T6 Gb
- Ex t IIIC T85 °C Db IP66

GOST-R

- 1 Ex d IIC T6 Gb
- Ex tb IIIC T85 °C Db IP66

CNEX

- Ex d IIC T6 Gb
- DIP A21 TA T6
- Tamb: -20+50°C
- Tamb: -40+50°C (when equipped with reinforced heater)

**ACCESSORIES**

EXPTS000 Sunshield 650mm for EXPT series

EXPTS001 Sunshield 760mm for EXPTD

**RELATED PRODUCTS**

EXDTRX3 Data telemetry receiver 17 functions, 230Vac

EXDTRX324 Data telemetry receiver 17 functions, 24Vac

**BRACKETS AND ADAPTORS**

EXPTWB000 Bracket RAL7032 for EXPT series

EXPTWB00R Supporto per EXPT RAL7001

**SPARE PARTS**

OEXMYLAR Mylar film replacement kit, 18m (59ft), 350 steps

OEXVET Complete front flange with glass for EXHC and EXPTC series, RAL7032

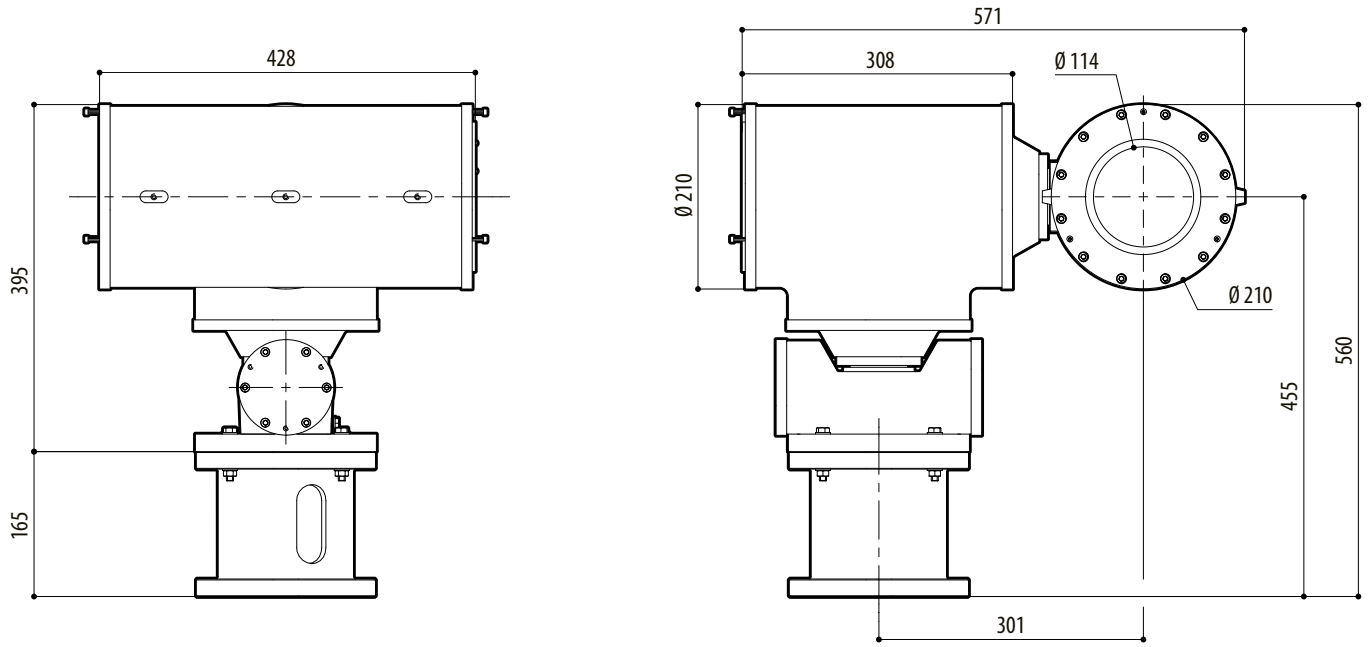
OEXDPV Complete front flange with glass protection device for EXHD and EXPTD series, RAL7032

OSLIEX Internal slide complete with heater for EXHC and EXPTC series

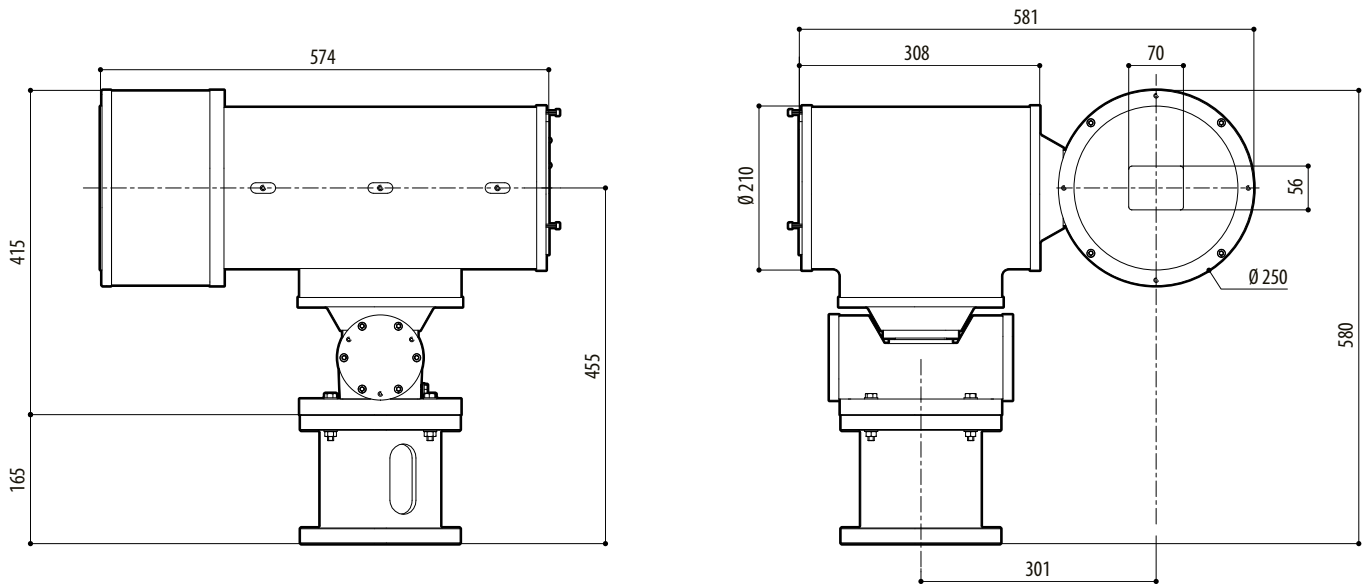
OSLIEXD Internal slide complete with heater for EXHD and EXPTD series

**PACKAGE**

Model Number	Weight	Dimensions (WxHxL)	Master carton
EXPTC000 (30x16x26.4in)	61.2kg (135lb)	-	76x41x67cm
EXPTD011 (30x16x26.4in)	66kg (145.5lb)	-	76x41x67cm



EXPTC



EXPTD

