

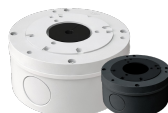
### KEY FEATURES

- 1/3" 4.0 Megapixel CMOS Image Sensor
- Up to 30fps live view @ 4 MegaPixel (2592x1520)
- Available with 3.6 or 2.8mm Fixed Lens Configurations: VTC-TNT4RFA3 (Ivory w/ 3.6mm), VTC-TNT4RFA3-2 (Ivory w/ 2.8mm), VTC-TNT4RFA3-B (Charcoal w/ 3.6mm), VTC-TNT4RFA3B-2 (Charcoal w/ 2.8mm)
- 1 Matrix IR (up to 100' IR Range)
- True Wide Dynamic Range
- True Mechanical Day/Night function by ICR
- XD-DNR (3D & 2D-DNR) Noise Reduction
- Abnormal Video, Face Detection, Regional Intrusion, Regional Entrance / Exiting Detection, Line Crossing, Target Counting
- Built-in Mic\*
- H.265, H.264 & MJPEG Compression
- Remote Viewing via CMS, Internet Explorer, and iOS & Android Apps
- ONVIF Compliant
- MicroSD Card Slot for Local Recording (128GB)
- IP67 Weather Resistance
- Optional Wall Mount (VT-TWMT-3) & Junction Boxes (VT-TJB01, VT-TJB08) Available
- 12VDC & PoE (Power over Ethernet) Operation

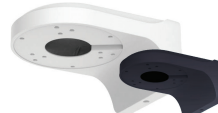
### MOUNTS



**VT-TJB01/B**  
Optional Junction Box for use with select Transcendent Bullet and Turret Cameras



**VT-TJB08/B**  
Optional Junction Box for use with select Transcendent Bullet and Turret Cameras



**VT-TWMT3/B**  
Optional Wall Mount for use with select Transcendent Dome and Turret Cameras

### RECORDERS



Pair with VITEK Transcendent Series Network Recorders VT-TNR818PF, VT-TNR1646PF, and VT-TNR3216PF with Built-in PoE and Advanced Analytics including Face Detection.

### SPECIFICATIONS

Image Sensor	1/3" 4.0 Megapixel Progressive Scan CMOS
Image Size	4 MegaPixel (2592 × 1520)
Resolution	4 MP (2592 × 1520) / 3 MP (2304 × 1296) / 1080P (1920 × 1080) / 720P (1280 × 720) / D1/CIF (480 × 240)
Min. Illumination	0 Lux (IR LED ON)
Lens	2.8mm or 3.6mm Fixed Iris Lens Options
Day/Night	True Day/Night by ICR
IR LEDs	1 Matrix Style IR LED
IR Distance	Up to 100'
Video Compression	Smart H.265 / H.265+ / H.265 / Smart H.264 / H.264+ / H.264 / MJPEG
Audio Compression	G.711A / G.711U
Main-Stream	4 MP, 2K, 3MP, 1080P, 720P (60Hz: 1 ~ 30fps; 50Hz: 1~25fps) HFR mode: 1080P / 720P (60Hz: 1~60fps; 50Hz: 1~50fps)
Bit Rate	64 Kbps ~ 8 Mbps
WDR	120dB Super WDR
DNR	XD-DNR (2D-DNR & 3D-DNR)
Quality	VBR (Five Levels of Adjustment) / CBR (Adjustable)
Image Setting	ROI, Saturation, Brightness, Chroma, Contrast, Wide Dynamic, Sharpen, NR; adjustable through client software or web browser
Intelligent Analytics	Abnormal Video, Face Detection, Regional Intrusion Detection, Regional Entrance / Exiting Detection, Line Crossing, Target Counting Detection
Smart Alarm	Motion detection, SD card error, SD card full
ROI	Each ROI to be configured separately
Audio	Built-in Mic*, 1 Ch. Audio In
Local Storage	Built-in micro SD card slot up to 128GB
RS485	× 1
Remote Viewing	CMS / Web Browser / Mobile (iOS/Android)
Supported Browsers	Internet Explorer, Chrome and Firefox with IE Tab
Connection Protocol	ONVIF
Weather	IP67
Power Input	12VDC / PoE
Power Consumpt. (12VDC)	120mA (LEDs Off) / 480mA (LEDs On)
Power Consumpt. (PoE)	< 7.5W
Working Environment	-22~140 / < 95% Humidity
Weight	16.23 oz. / 1.01 lbs. / 460g
Dimensions	3.77" x 4.25" (95.7 × 108mm) Dia × H

\*Please research local, state and federal laws regarding the implementation of audio surveillance.