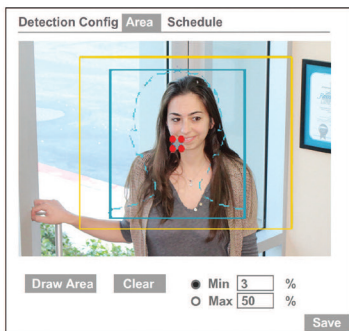




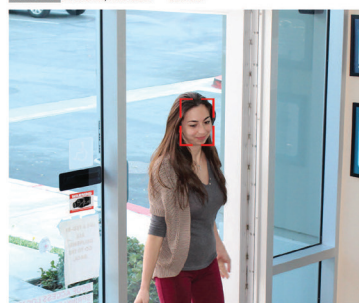
Transcendent Series Stand-Alone Network Video Recorders offer simple and comprehensive search functions supporting advanced analytics and superior compression (H.265) for optimum storage capability. Model VT-TNR3216F supports Facial Detection Search as well as Fisheye Camera De-Warping. Delivering up to 8MP (4K) recording in real-time (30fps per channel), simple plug-n-play installation, and 4K HDMI video output, these recorders also share the robust yet simple Transcendent Mobile Applications and Highly sophisticated CMS as the Transcendent Coax based solutions.

FEATURES

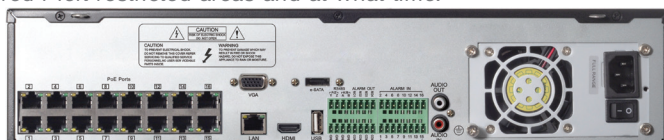
- 32 Channel Stand-alone Real-time IP NVR
- Full 8MP Real-time recording (960fps) w/ 16ch (480fps) playback
- 4K HDMI & VGA Video Outputs
- H.265 / H.264 Video Compression
- Plug and Play & Auto configuration for many leading ONVIF compliant IP Camera models
- Fully Programmable Intelligent Analytics including Face Detection, Object Removal/Museum Search, Line Crossing, and Area Intrusion Detection
- Internal 16-Port PoE Switch
- 1 Gigabit LAN Port
- Pentaplex: Live Display/Record/Playback/Backup/Remote Access
- 16 Local Alarm Inputs/4 Alarm Outputs
- Supports Facial Recognition and Detection with 16 Channels, and a 10,000 Picture Database
- Features Facial Search-by-Picture, with the ability to add pictures through App, Web, and Local PC
- Face Trace with resolution of 600x300 - 3840x2160
- De-Warp Fisheye image into 3 separate images which can be manipulated for closer inspection.
- 8 Internal SATA2/3 HDD Slots supporting up to 80TB (8 x 10TB)
- RS485 & Network Based PTZ Control
- Applications for iOS® & Android®
- Remote Viewing over the Internet via Web Browser or LAN
- Mac OS® Client & CMS Included
- Supports both Dynamic and Static IP Addresses
- Web-based remote configuration
- Control locally via Front Panel Controls, USB Mouse, or with the Included IR Remote control
- Heavy duty rack ears included



Facial Detection: Security personnel can determine who entered / left restricted areas and at what time.



Fish Eye De-Warping: Multiple Views include 360° Overview, Double 180° Panorama View, Quad View, Overview + 3 Views, and Single View



Rear Connections



28492 Constellation Road Valencia, CA 91355

An Eye On Innovation

VT-TNR3216PF Specifications

Video Input / Resolution	32 IP Channels up to 8 MegaPixel
Main Monitor Output	1 x 4K HDMI / 1 x 1080P VGA
Multi Operation	Pentaplex: Live Display / Record / Playback / Backup / Remote Access
Recording Compression	H.265 / H.264
OS	Embedded Linux
Recording	960fps (30fps per channel)
Audio over IP Inputs	32 (1 Audio Channel per IP Camera over IP)
Local Audio In/Out	IN: RCA x 1CH / OUT: RCA x 1CH
Two-Way Audio	YES
Encode	CBR
Quality Levels	11 level (According to Bit Rate)
Recording Modes	Manual / Timer / Motion / Sensor
Local Playback	16CH
Face Detection Channels / Database	240 pictures / minute
Face Detection: Search by Picture	Add, Modify, Delete and Search Face Pictures
Face Detection: Adding face pictures	Resolution (64×64 - 1920×1080), .jpg below 200KB
Face Detection: Face Trace Map	Resolution (600×300-3840×2160), .jpg below 200KB
Image Dewarping	De-Warp into 3 Separate Images
Search	Time sliced image search, Time/Calendar search, Event (Motion, External alarm), Tag search
Alarm Modes	Sensor, Motion, Video loss, IP conflict, Disk error, Illegal access, Network disconnection
Alarm Inputs / Output	16CH Local Input + 1 Channel per IP Camera / 4CH
Alarm Triggering	Record, Snap, PTZ move, Alarm out, E-mail, etc
Network Interface	RJ45 x 1
POE ports	RJ45 x 16, with POE
PoE Standard	802.3af 15W max per port
Total PoE Budget	150W all ports
Bit Rate (Per Camera)	512Kbps ~ 10 Mbps (Adjustable)
Total Bandwidth	256Mbps Incoming / 256Mbps Outgoing
Dual-stream	Individual Network Video Stream and local recording stream, set separately
Network Protocols	TCP/IP, UDP, DHCP, DNS, PPPoE, DDNS, Email, UPNP, NAT, Telnet
Remote Viewing	CMS / Web Browser / Mobile Platforms
Remote Users	10 Simultaneous Online Users
Backup	Network, USB
SATA HDD	SATA x 8, max to 10TB each
RS485	RS485 x 2 (for PTZ and Keyboard)
PTZ Protocol	Through Network or RS485 (Pelco D / Pelco P)
USB	USB 2.0 x 1 + USB 3.0 x 1 (for mouse and USB backup device)
Power Consumption / Power Supply	≤ 15W (Without HDD) / AC 110/220V (ATX 300W)
Working Environment	32°~122°F @ 10% ~ 90% RH
Dimensions (WxHxD) / Weight	16.93" x 3.54" x 17.72" (430 x 90 x 450mm) / 19.62lbs (8.9kg)