



Also Available in Charcoal Gray
(VTC-TNT5RMSB)

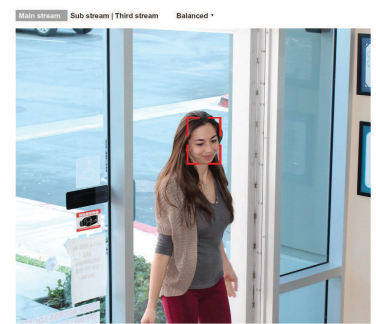
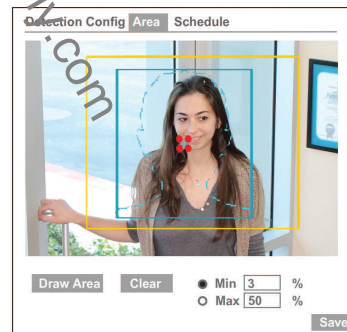


FEATURES:

- 1/2.5" 5.0 Megapixel Progressive Scan CMOS image sensor
- Up to 30fps live view @ 5MP (2592x1944)
- Motorized 3.3-12mm Varifocal Lens
- 2 High Power Infrared LEDs w/ a 100' IR Range
- 120dB Super Wide Dynamic Range (WDR)
- True Mechanical Day/Night function by ICR
- XD-DNR (2D-DNR & 3D-DNR) Noise Reduction
- Fully Programmable Intelligent Analytics including Face Detection, Object Removal/Museum Search, Line Crossing, and Area Intrusion Detection
- H.265/H.264/MJPEG Triple Streaming
- Secondary Video Output (CVBS)
- Remote Viewing via CMS, Internet Explorer, and iOS & Android Apps
- IP66 Weather Resistance Rating
- ONVIF Compliant
- Optional Wall (VT-TWM03/B) and Junction Box (VT-TJB01/B) Mounts Available
- 12VDC & PoE (Power over Ethernet) Operation

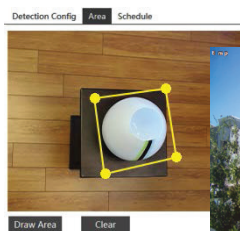
Intelligent Analytic Features Include:

Facial Detection - Security personnel can find out who entered and left restricted areas and at what time



Object Removal (Museum Search) - Sends notifications if an existing object is missing from the camera's view for a certain period of time

Line Crossing - NVR begins recording and an alert is sent when a line is crossed (ideal for property monitoring)



VTC-TNT5RMS, VTC-TNT5RMSB Specifications

Image Sensor	1/2.5" 5.0 Megapixel Progressive Scan CMOS
Image Size	5 MegaPixel 2592x1944
Resolution	5 MP (2592x1944) / 4 MP (2592x1520) / 3 MP (2304x1296) / 1080P (1920x1080) / 720P (1280x720) / D1/CIF (480x240)
Min. Illumination	0 Lux (IR LED ON)
Lens	Motorized 3.3-12mm
Day/Night	True Day/Night by ICR
IR LEDs	2 High Power
IR Distance	100'
Video Compression	H.265 / H.264 / MJPEG
Audio Compression	G.711A / G.711U
Multi-Stream	1~30fps: 5 MP, 4 MP, 3 MP, 1080P, 720P, D1, CIF, 480x240
WDR	120dB Super WDR
DNR	XD-DNR (2D-DNR & 3D-DNR)
Quality	VBR (Five Levels of Adjustment) / CBR (Adjustable)
Image Setting	Saturation, Brightness, Contrast, WDR, Noise reduction
Intelligent Analytics	Face Detection, Object Removal/Museum Search, Exception, Line Crossing, Smart Intrusion, People Intrusion, People Counting, Crowd Density
Smart Alarm	Motion Alarm
ROI	Max 8 detailed areas can be viewed
Network	RJ45
Video Output	1 x BNC (CVBS)
Audio	1 x IN (One-Way Audio)
Remote Viewing	CMS / Web Browser / Mobile (iOS/Android)
Supported Browsers	Microsoft Internet Explorer, Chrome and Firefox with IE Tab
Connection Protocol	ONVIF
Weather Resistance Rating	IP66
Power Input	12VDC / PoE
Power Consumption (12VDC)	210mA (IR Off) / 420mA (IR On)
Power Consumption (PoE)	4W (IR Off) / 6.7W (IR On)
Working Environment	-4~122 / 10%~90% Humidity
Weight	24.69 oz. / 1.54 lbs. / 700g
Dimensions	5.13" x 4.33" (130.3 mm x 110 mm) Dia x H



Use with VITEK Transcendent Series Real Time Network Video Recorders



Transcendent 16 & 32Ch NVRs, models VT-TNR1616F & TNR3216PF with Facial Detection Support



VT-TWM03/B

Optional Wall Mount for Transcendent 30 IR LED Vandal Domes and Motorized Turret Cameras

VT-TJB01/B

Optional Junction Box for Cable Management for use with all Transcendent Bullet and Turret Style Cameras