



FEATURES:

- 1/3" 2.1 MegaPixel CMOS Sensor
- HD-TVI & AHD/CVBS Video Output
- 2.8~12mm Varifocal Lens
- 30 Infrared LED's with 100' IR Range
- Digital Wide Dynamic Range (D-WDR)
- True Mechanical Day/Night function by ICR
- 3D-DNR Noise Reduction
- IP66 Weather Resistance
- Supports Up The COAX Control
- Over 1500' HD Video Transmission (Depending on cable characteristics and integrity)
- Optional Wall Mount Available (VT-TWM03)
- 12VDC Operation

Transcendent Series High Definition 1080P HD-TVI, AHD, CVBS Cameras offer unprecedented performance and value.

These simple, easy to install, attractively styled, analog HD Cameras transmit over your existing Coaxial cable at distances up to 1500'.

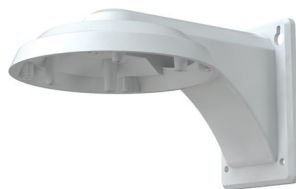
Use with VITEK Transcendent Series HD-TVI/AHD/960H Recorders with IP Camera Support



Transcendent Series 4, 8 or 16 Channel Digital Video Recorder Supporting HD-TVI, AHD, and 960H Cameras as well as IP Cameras with Full 1080p Recording & Playback.

Specifications

Image Sensor	1/3" 2.1 MegaPixel CMOS Sensor
Resolution	1080p (2.1 MegaPixel)
Effective Pixels	1920(H) x 1080(V)
Signal System	PAL/NTSC
Video Output	1x HD-TVI (BNC) & 1 AHD/CVBS (BNC)
Lens	2.8~12mm (Vari-Focal)
Day/Night	True Day/Night by ICR
S/N Ratio	>52dB (AGC OFF)
Auto Gain Control	OFF ~44.8dB
Min Illumination	0 Lux (LED ON)
IR LEDs	30
IR Distance	100'
Color-B/W Auto Switch	Yes
Electronic Shutter	1/50s~ 1/67500s
White Balance	AWB
WB Range	2300~9600K
BLC	Yes
WDR	Digital WDR
Transmission Distance	Up to 1500' (Depending on cable characteristics & integrity)
Up the COAX Control	YES
Noise Reduction	Yes
Weather Resistance	IP66
Power Supply	12VDC
Working Environment	-4~122 / 10%~90% Humidity
Weight	34.22 oz. / 2.14 lbs. / 970g
Dimensions	5.91" x 4.49" (150 x 114mm) Dia x H



Optional Wall Mount Available
(VT-TWM03)