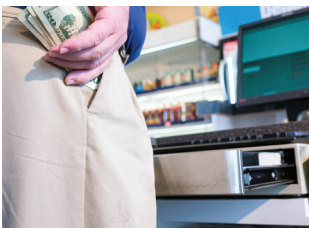




The Next Revelation in the award winning OnCue Series is the Bridge. Now connecting EX-SDI, TVI, AHD, CVI, IP and Analog (CVBS) all on one recording machine. Supporting up to 5MP IP and available in 8 and 16 input options VITEK is taking the Guesswork out of the ever changing and rapidly progressing video security market. Enjoy the most intuitive and complete interface without the restrictions of individual transmission methods.

FEATURES

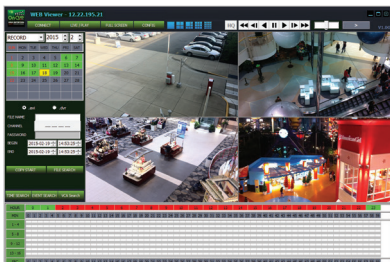
- 16 Channel Stand-alone Real-time Video Recorders
- Supports IP, EX-SDI, TVI, AHD, CVI, Analog (CVBS) Cameras with automatic format detection
- Full HD MegaPixel Real-time recording, live display, and playback
- Panorama (Thumbnail) Search
- HDMI 2.0 (4K), VGA, and BNC Outputs
- Plug and Play & Auto configuration for IP cameras via OnVIF or generic protocol
- Point-Of-Sale (POS) Integration
- Alarm In/Out
- 2-way Full Duplex Audio
- Video Analytics with Search Feature (Camera Dependent)
- Remote Viewing via CMS Software, Internet Explorer, and Mobile Phones (iOS/Android)
- Web-based remote configuration
- Advanced Video Detection: Camera tampering, Camera lens blocking, Day&Night, Defocus
- Supports up to 12TB Internal Storage (2 x 6TB each)
- eSATA for storage extension of up to 5 more HDD
- Configurable Advanced Mirroring (Dual Recording, RAID1)
- RS-485 / CoC (Control Over Coax) PTZ Control



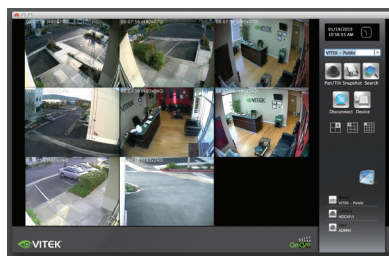
Integrated Point of Sale Feature allows search by exception or keyword.



Access Recorded events within seconds with the Award Winning On Cue Panorama Search function.



Full Featured Remote Viewing from anywhere!



Remote Viewing Application for Windows & Mac OSX!



Remote Viewing Apps for Apple iOS & Google Android!



(888) VITEK-70 | WWW.VITEKCCCTV.COM
28492 Constellation Road Valencia, CA 91355

An Eye On Innovation

Detailed Specifications

Video Input / Resolution	8-CH EX-SDI/HD-SDI / AHD / TVI / CVI / CVBS / IP
Main Monitor Output	1 HDMI 2.0 (4K) / 1 VGA (up to 1920x1080)
Spot Output	1 BNC (Full HD)
Audio In/Out	4 line in (RCA) / 1 line out (RCA) & HDMI Audio Output
Alarm In/Out	8 In / 1 Out (Relay)
Recording Compression	H.264
Recording Multi Operation	Pentaplex (Live, Playback, Recording, Backup, Network)
Recording	240fps: 30fps per channel @ D1, 960H, 720p, 1080p
IP Camera Support	2MP 8ch @ 30fps / 3/4MP 4ch @ 15fps / 5MP 2ch @ 12fps
Playback	Up to 240fps
Live Display Speed (Max)	240fps @ 1080p
Simultaneous Network Connections	Up to 8
Recording Mode	Continuous, Event (Motion, Alarm), Schedule
Motion Detection / Privacy Masking	64 x 48 Grid
Storage Interface	SATA2 (Supports Advanced HDD Formatting)
SATA HDD Inputs	2x - Up to 6TB each using Advanced Format (Up to 12TB Internal Storage)
eSATA	External SATA PMP Support (~5 HDDs)
Data Redundancy (Mirroring / Event)	Dual Recording Mode (Individually Selectable Channel & by Event)
External Backup	AVI / DVR Format to USB Device (HDD, Thumb Drive, etc.) & Network
System Control	Front Key Buttons / USB Mouse, IR Remote Controller
Network	LAN (TCP/IP Ethernet, RJ45), DHCP, Dynamic IP, DDNS, uPNP, HTTP, NTP
Ethernet Port	10MB / 100MB / 1GB
PTZ Control	CoC (Up the COAX) / 1x RS485
Remote Viewing Software	CMS / Web Browser / Mobile (iOS/Android)
Adjustable Access Levels Per User	Search & Play / Archiving / DVR Setup / PTZ Control / Power Off
Digital Zoom	Linear scale for Live & Playback
Image adjustment	Brightness, Contrast, Hue, Saturation
POS (Point of Sale)	YES - Extendable up to 8 PoS Interface
Panorama (Thumbnail) Search	YES
PTZ Tour Event Preset	YES
Sensor Triggered PTZ activation	YES
Motion Sensor Display	YES
DDNS	YES
Email Notification	YES
Power	12VDC / 5A
Operating Temperature	41~104 °F (5~40 °C) / 20~80% RH
Dimensions (W x H x D)	13.31" x 2.43" x 9.75" (338 x 62 x 248mm)
Weight	7.28 lbs. (3.3 Kg)



Rear Connections