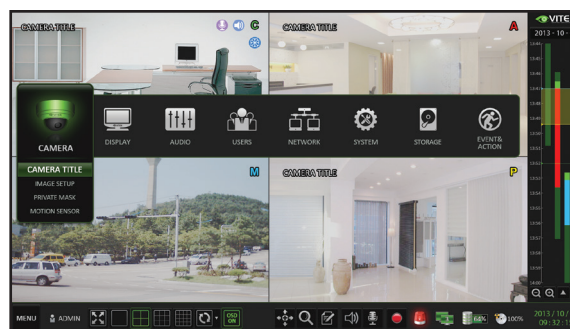


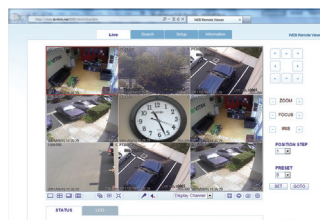


FEATURES

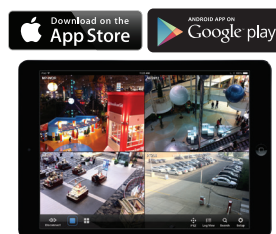
- Supports High Resolution HD-TVI, AHD, and 960H Cameras
- 4 or 8 Video Inputs with 1 HDMI & 1 VGA Output
- H.264 Compression
- Realtime with up to 240fps Live Display & 240fps Recording (VT-SHE908A) / 120/120 (VT-SHE904A)
- Supports both Dynamic and Static IP Addresses
- 4 Audio In / 1 Audio Out
- 4 Alarm Inputs with 1 Relays (VT-SHE908A)
- Remote Viewing over the Internet via Web Browser or LAN
- Up to 2 internal 6TB HDD for up to 12TB of internal Storage (VT-SHE908A) / 1 internal HDD (VT-SHE904A)
- 6TB Hard Drive Support
- Applications for iPhone, iPad, iTouch and Android Devices
- "Quick Search" Function for automatic review
- Mac OSX Client & CMS Central Management Software Included
- Automatic sending of Health & Event notifications via email
- Control locally via USB Mouse or with the Included IR Remote control
- PTZ Control over RS-485 (VT-SHE908A)



Intuitive configuration menu.



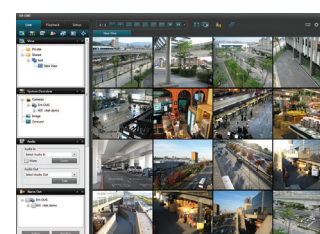
Remote Viewing over the Internet, LAN, Explorer, Safari, Firefox, Opera and Chrome



Remote Viewing Apps Available for iPhone, iPad & Android Devices



View backups on PC computers using included Backup Player Software



Included CMS Software allows remote viewing & control of multiple DVR's even when located at multiple locations!

VT-SHE-A Series

4 or 8 Channel SpireHD Series Realtime HD-TVI / AHD / 960H Digital Video Recorder

Detailed Specifications	VT-SHE904A	VT-SHE908A
Video Inputs	4 Channels (TVI / AHD / 960H)	8 Channels (TVI / AHD / 960H)
Video Compression	H.264	H.264
FPS (Display & Recording)	120 / 120 @ 1080P / 720P / 960H / D1 / 2CIF / CIF	240 / 240 @ 1080P / 720P / 960H / D1 / 2CIF / CIF
FPS (Playback)	Up to 30FPS @ 1080p / Up to 120FPS @ 2CIF	Up to 30FPS @ 1080p / Up to 120FPS @ 2CIF
Operating System	Linux	
Video Output	VGA / HDMI	
Split-Screen	Live: 1, 4, SEQ / Playback: 1, 4	Live: 1,4,6,8,9, SEQ / Playback: 1, 4, 9
Audio In/Out	4 Line In (RCA) / 1 Line Out (RCA)	
Internal Storage	1 Internal HDD (SATA)	2 Internal HDD (SATA)
External Storage	NAS (Backup to FTP Server)	
Archive	USB Device & Network	
USB Port	2 Ports (2 Front)	3 Ports (2 Front + 1 Rear)
System Control	USB Mouse, Included IR Remote Control	
Network	TCP/IP, HTTP, DHCP (DDNS)	
RJ-45 Ethernet Port	1x - 10/100/1000Mbps	
Auto Port Forwarding	YES	
Search	Calendar, Time, Panorama (thumbnail), Event	
PTZ Control	CoC (Up the COAX)	
Recording Resolution Setting	Individual resolution settings for each camera (CIF, 2CIF, D1, 960H, 720p, 1080P)	
Recording Quality Control	5 Levels (Lowest/Low/Standard/High/Highest)	
Recording Modes	By hour, by day, by recording mode, By alarm, By Ch	
Panic Record	Overrides all other recording settings to provide the best quality recording	
Pre-recording	Max. 15 seconds	
Post-recording	Max. 180 seconds	
Motion Detection	Adjustable 20x12 Grid with 10 Steps Sensitivity Level	
Player	Backup player, and HDD PC Viewer	
Remote Viewing	YES (Windows®, Linux, Mac OSX®)	
E-mail notification	E-mails to specific users to notify events	
System Configuration	Full setup configuration over network	
Bandwidth limit	YES: Adjustable by User	
Two-Way Audio	YES	
Power	12V Adaptor, 2A, 100~240VAC, 50~60Hz	12V Adaptor, 3.3A, 100~240VAC, 50~60Hz
Power Consumption	4W max. without HDD	5W max. without HDD
Operating Temperature	32° ~ 104°F (0° ~ 40°C)	
Humidity	10 ~ 90% NC	
Case Form Factor	1U	
Dimensions (W x H x D)	10" x 1.85" x 7.25" (255.6 x 44 x 172.3mm)	12" x 1.85" x 12.25" (305 x 44 x 298mm)
Weight	3.3 lbs. (1.5kg)	6.85 lbs. (3.1kg)