



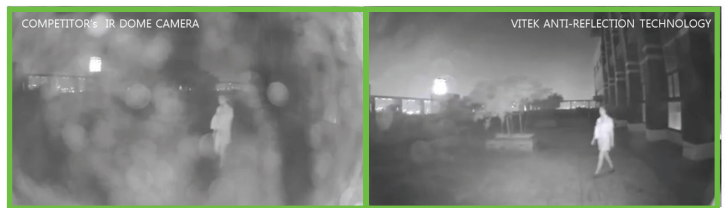
**FEATURES**

- 1/2.8" Sony® Progressive Scan "Starvis" CMOS (IMX291)
- 2.1 MegaPixel with Full 1080p/720p Video Output
- HD-SDI/EX-SDI / TVI / CVI / CVBS (Selectable) Output
- Six High Power 850nm IR LEDs with up to 120' foot range
- MegaPixel IR Corrected 2.8-12mm Motorized AF Varifocal Lens Included
- Mechanical IR Cut Filter (True Day/Night)
- Anti-Glare Technology achieved with Advanced Dome Coating along with Separation of Lens & IR LEDs
- 16:9 Video Format
- Advanced OSD Functions: Motion Detection, Sharpness, Gamma, Mirror, Flip, DSS, Freeze, D-Zoom, ACE, WDR, 3D-DNR, Defog, Privacy, HLM
- 100% Pure Digital Transmission of video data
- Up to 1000' HD Transmission Range (Depending on cable characteristics and integrity)
- Supports Control Over COAX (CoC)
- 12VDC/24VAC Dual Voltage Operation
- Available in Ivory or Black
- 3 Year Warranty

**ANTI-GLARE DOME CAMERA TECHNOLOGY**



*Water sprayed onto camera lens creates rain like effect and an unfavorable recording camera condition.*



*Commercial IR Dome Camera vs. VITEK Anti-Glare Technology delivers a far superior image captured.*



*Inside Of Dome*



(888) VITEK-70 | WWW.VITEKCCTV.COM  
 28492 Constellation Road Valencia, CA 91355

**An Eye On  
 Innovation**

Detailed Specifications	
Sensor	1/2.8" Sony® Progressive Scan "Starvis" CMOS (IMX291)
Resolution	2.1 MegaPixel (1080p / 720p)
S/N	More than 52 dB (AGC Off)
Video Output	1x BNC: HD-SDI/EX-SDI & 1x BNC: TVI / CVI / CVBS Analog Hi-Def (Selectable)
IR Illuminators	6 High Power IR LEDs
IR Color Temp.	850nm
IR Range	Over 120 Feet
Dynamic Intensity Smart IR LEDs	YES
Lens	MegaPixel IR Corrected 2.8-12mm Motorized AF Varifocal
Minimum Illumination	1 Lux at F1.2 / 0.1 Lux (B/W) / 0 Lux with IR On
Day/Night	Mechanical IR Cut Filter (True Day/Night)
Electronic shutter speed	Auto / Manual (1/30sec ~ 1/60,000sec)
White Balance	ATW / ATWext / One Push / Manual
Brightness	Adjustable (0 ~ 20 Steps)
DSS (Sens-Up)	OFF / X2 ~ X32
DNR	3D-DNR
WDR	YES
Privacy Zones	YES (16 Zones / 8 Polygons)
Motion Detection	YES
ACE (Adaptive Color Enhancement)	YES
Advanced OSD Functions	Motion Detection, Sharpness, Gamma, Mirror, Flip, Freeze, D-Zoom, ACE, WDR, Defog, Shading, Privacy, HLM, Flip
Control Over COAX (CoC)	YES
HD Transmission Range	Over 1000' (Depending on cable characteristics and integrity)
Weather Resistance Rating	N/A
Operating Conditions	14°-122°F (-10°-50°C) < 80% RH
Input Voltage	12VDC / 24VAC (Dual Voltage)
Power Consumption (12VDC)	150MA (IR Off) / 550MA (IR On)
Power Consumption (24VAC)	70MA (IR Off) / 300MA (IR On)
Dimensions	5.44" X 3.7" (Dia. x H)

Sony® is the registered trademark of an independently owned and operated company. This product has not been licensed or endorsed by the manufacturer of Sony® products.

**OPTIONAL WALL MOUNT**



**VT-AP/WMT**  
 Indoor Wall Mount



**AVAILABLE CONFIGURATIONS:**

VTD-HOCCR212M/IW 2.1MP HD/EX-SDI, TVI, CVI, CVBS Dome Camera w/2.8-12mm Motorized AF Lens & 120' IR Range - Ivory  
 VTD-HOCCR212M/IB 2.1MP HD/EX-SDI, TVI, CVI, CVBS Dome Camera w/2.8-12mm Motorized AF Lens & 120' IR Range - Black

**BREAKDOWN OF MODEL NUMBER: VTD-HOCCR212M/IW**

<b>{VTD}</b>	<b>{H}</b>	<b>{OCC}</b>	<b>{R}</b>	<b>{212}</b>	<b>{M}</b>	<b>{I}</b>	<b>{W}</b>
VITEK Dome	High Definition	OnCue Complete	Infrared	2.8-12mm	Motorized	Indoor	Ivory



(888) VITEK-70 | WWW.VITEKCCTV.COM  
 28492 Constellation Road Valencia, CA 91355

**An Eye On  
 Innovation**