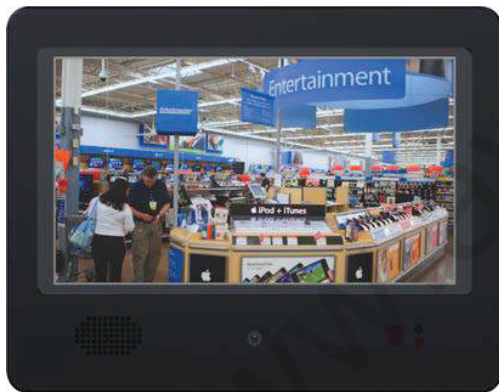


Weldex 8" IP EPVM



WDL-EPVM8

- High quality and cost-effective
- Low power consumption for cost savings
- Built-in WDR HD camera with motion sensing
- Built-in Removable SD card for displaying advertising or corporate message
- on-board DVR included with SD card slot
- Switch between camera video and display advertisement on motion activity
- User definable text warning message
- Built-in alarm I/O
- Compatible management S/W (verint nextiva 6.x, march video sphere R5)



Distributed By: Audio Video Supply -- Tel: 1-800-284-2288 -- www.avsupply.com

Specification

Section		8" EPVM
Display	Screen size	8"
	Resolution	800×480
	Brightness	450 cd/m ²
	Contrast ratio	500 : 1
	Response time	< 20ms
	Viewing angle	140(H) / 120(V)
	Aspect ratio	16:9
Camera	Image sensor	1/2.7" omnivision 1.3M progressive C-MOS
	Lens	Fixed 3.7mm F2.0
	Active pixel	1280(H)×720(V)
	Frame rate	30 fps
	Shutter	Rolling shutter
	Wide dynamic range	115 dB
Interface	Storage	DVR
		Storage media
	Alarm I/O	Terminal block 4P
	Speaker	1W mono speaker
	User I / F	User input I/F
		Indicators
		Remote controller (coming soon)
Power	Mount	VESA™ 75×75mm
	Power adapter	12VDC 4A
	Power consumption	< 0.7A
Environmental	Operating temperature	0°C ~ 50°C
	Humidity	10 ~ 90% RH, non condensing
Dimensions	Outline dimension	220mm(W)×172mm(H)×28mm(D)
	Weight	-

Dimensions

