

# 16 Channel H.264 Digital Video Recorder

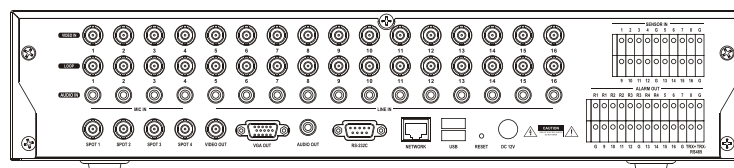
WDR-6264



- True H.264 standard video compression
- Up to four SATA HDD
- 4 USB ports for mouse operation, Multi USB hub and backup
- Text-in & relay output support
- Archiving function which allows the dual recording on multi HDDs
- Embedded linux system for the ultimate reliability
- CMS (Central Monitoring System); web monitoring searching and setup
- 8 & 16 audio inputs; two-way audio
- Dedicated DB structure for stability

## SPECIFICATION

Video input	16BNC
Video output	1VGA & 1BNC main, 4spots output
Audio input	16RCA (4mic in, 12line in)
Audio output	1RCA (line out)
Sensor in	16TTL
Alarm out	4 relay + 12 TTL
I/O interface	RS232, RS485, USB2.0x3, USB1.1 x 1 for mouse
Speed	Real time
Resolution	720 x 480(NTSC), 720 x 576(PAL)
Split screen	1, 4, 9, 13, 16, PIP, digital zoom
Compression	H.264 codec
Speed resolution	480fps@CIF(NTSC) / 400fps@CIF(PAL)
	240fps@CIF(NTSC) / 200fps@CIF(PAL)
	120fps@CIF(NTSC) / 100fps@CIF(PAL)
Picture quality	Very high, high, standard, low
Recording mode	Time-lapse, event, time&event, emergency(panic)
Playback display	1, 4, 9, 13, 16 digital zoom
Search mode	Calendar search, event search, text-in search, go to time
Playback mode	Multi channel normal & reverse play, RW & FF (x2, x4, x8, x16, x32), frame to frame, pause
Network interface	Ethernet (10/100 base)
Protocol	TCP/IP, HTTP, DHCP
Application	Live, playback, setup, notification(callback, e-mail)
Web browser	Internet explorer7 or higher
Storage	3 x SATA HDD & 1 x SATA ODD(or max, 4 SATA HDD without ODD)
Backup	Internet ECD & DVD-RW, external HDD(USB), external USB memory
Control	Front panel button, jog-shuttle, USB mouse, IR remote controller, joystick controller
OSD	Graphic user interface (multilingual)
Approval	FCC, CE, MIC
RoHS	RoHS compliance
Power consumption	DC12V, 6.67A(80W)
Operating temperature	5°C ~ 40°C / 41°F ~ 104°F
Operating humidity	0% ~ 80% / non-condensing
Dimensions	430(W) x 88(H) x 428(D)mm / 16.93"(W) x 3.5"(H) x 16.85"(D)
Weight	6Kg / 13lbs(without HDD)



WDR-6264 Rear Panel

Distributed By: Audio Video Supply -- Tel: 1-800-284-2288 -- www.avsupply.com

weldex.com  
oem@weldex.com  
Tel: (714) 761-2100 [USA]  
Fax: (714) 761-3811 [USA]  
Tel: +49 (0)2102 528 2803 [GER]  
Fax: +49 (0)2102 528 2804 [GER]

© 2014 Weldex  
6751 Katella Avenue, Cypress, CA 90630 [USA]  
Broichhof Strasse 5 D-40880 Ratingen, Germany [GER]



For design help, accessories or pricing, please contact:  
sales@avsupply or call: 1-858-565-1101

1-800-284-2288 sales@avsupply.com  
www.avsupply.com

# 16 Channel H.264 Digital Video Recorder

WDR-6264

## True H.264 standard video compression

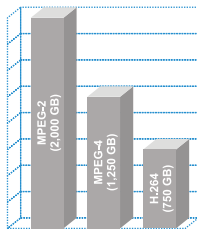
The most-touted feature of WDR-8264/6264 is the inclusion of the H.264 video codec, also known as Advanced Video Codec (AVC) or MPEG-4 Part 10. This is the latest video standard to emerge from the MPEG standards group.



H.264 at 320x240, 450 Kbps

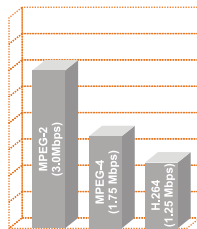


MPEG-4 at 320x240, 450 Kbps



- Smaller File Size
- 60% less than MPEG-2
- 40% less than MPEG-4
- Longer Record Times
- Lower HDD Costs

- Lower Bandwidth
- Faster Downloads
- Smoother & Cleaner Video over Network



## Real time recording & multi ch. playback

WDR-8264/6264 supports full Real Time Recording (at CIF) for entire channels. Users can record images at real time speed, and are able to search the important recorded data using various search options with multi channel playback at the same time.



10 images per second



30 images per second

## Dedicated DB structure for stability

WDR-8264/6264 has its own distinctive image DB structure which enhances and optimizes the recording data stability. It provides a fully recoverable and protection system for recording data against unexpected system shut downs.



## Embedded linux system to give you the ultimate reliability



WDR-8264/6264 uses internally optimized Embedded Linux System which provides the most reliable and stable DVR applications that cannot be found in PC systems.

## 4 spots output with event pop up function

WDR-8264/6264 provides additional 4 video outputs (Spot Out). Event Pop-Up feature on Spot Outs allow effective monitoring for users.



## Archiving function to secure the high stability for recorded data



WDR-8264/6264 provides Archiving feature which allows the dual recording on multi HDDs. This protects data on HDD from physical damages by keeping the same data on a different HDD.

## 4 USB port for mouse operation, multi USB hub and backup



WDR-8264/6264 provides multi purpose USB ports (4ea). These USB ports provide USB control, Upgrade, Save settings and various backup options using USB memory, external HDD, etc.

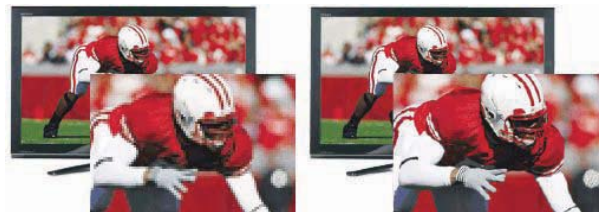
## Up to 4 SATA HDD and no limitation of capacity



WDR-8264/6264 supports unlimited storage capacity for the effective recording. Up to 4 SATA HDDs can be installed or 3 SATA HDDs can be installed with 1 SATA ODD.

## Various recording resolution DI/half DI/CIF

WDR-8264/6264 provides various recording resolution options and individual recording schedule. Different recording speed can be set for each channel depending on various circumstances.



weldex.com  
oem@weldex.com  
Tel: (714) 761-2100 [USA]  
Fax: (714) 761-3811 [USA]  
Tel: +49 (0)2102 528 2803 [GER]  
Fax: +49 (0)2102 528 2804 [GER]

For design help, accessories or pricing, please contact:  
sales@avsupply or call: 1-858-565-1101

© 2014 Weldex  
6751 Katella Avenue, Cypress, CA 90630 [USA]  
Broichhof Strasse 5 D-40880 Ratingen, Germany [GER]

**WELDEX**

Distributed By: Audio Video Supply -- Tel: 1-800-284-2288 -- www.avsupply.com

# 16 Channel H.264 Digital Video Recorder

WDR-6264

## CMS (Central Monitoring System)

WDR-8264/6264 provides 64ch multi monitoring/search program which allows the most effective remote controlling system.



## Easy setup same like DVR GUI in CMS

WDR-8264/6264 provides the most effective remote Set Up option for users. Same setup Menu and GUI (Graphic User Interface) option as Local system is also provided in Remote program. This provides an easier and friendlier remote control environment for users.



## Web monitoring, searching and setup



WDR-8264/6264 provides the most convenient remote controlling option via the Web Browser. Users can Monitor, Search and Set Up their DVRs from anywhere in the world just by using the Web Browser (Internet Explorer 7.0 or Higher) on any PC without a specific remote program.

## Own media player for backup playback

WDR-8264/6264 provides a self executable solution for simple backup data playback. This does not only provide effective data search and playback but also prevents unauthorized data alteration.



## 8/16 audio input support

WDR-8264/6264 provides full Audio recording functions. 8 to 16 Audio are provided for individual channels, and 4 internal Mic In's are included for the direct connection with Microphone.



## Two-way audio

WDR-8264/6264 provides Two-Way Audio communication. This allows the advanced communication between DVR and Remote site.



## Multiple DVRs can be operated with one keyboard controller



WDR-8264/6264 allows effective and various controlling options using the Remote Controller, Mouse, Front Panel and Keyboard Controller. Users can control multi DVRs using single Keyboard controller.

## Text-in relay output support



WDR-8264/6264 provides Text In function for POS and ATM devices using RS232 port. Alarm Outputs are provided for entire video channels. 4 Relay Outs are also included among them for user convenience as users do not need additional relay devices.

weldex.com  
oem@weldex.com  
Tel: (714) 761-2100 [USA]  
Fax: (714) 761-3811 [USA]  
Tel: +49 (0)2102 528 2803 [GER]  
Fax: +49 (0)2102 528 2804 [GER]

For design help, accessories or pricing, please contact:  
sales@avsupply or call: 1-858-565-1101

© 2014 Weldex  
6751 Katella Avenue, Cypress, CA 90630 [USA]  
Broichhof Strasse 5 D-40880 Ratingen, Germany [GER]

**WELDEX**

Distributed By: Audio Video Supply -- Tel: 1-800-284-2288 -- www.avsupply.com